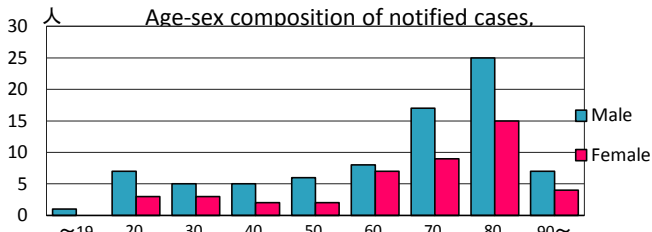
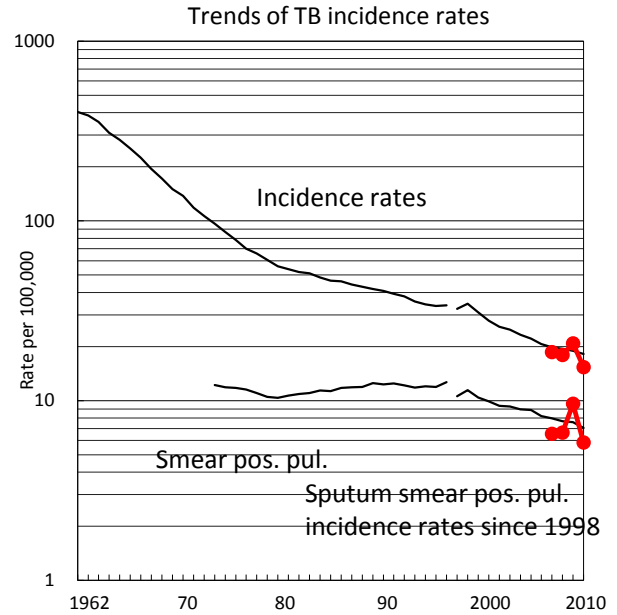
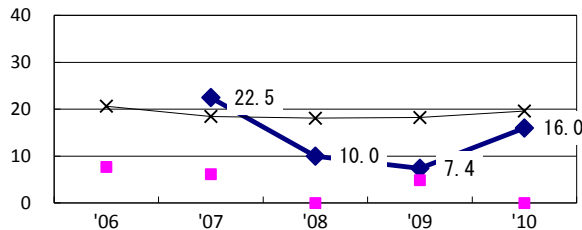


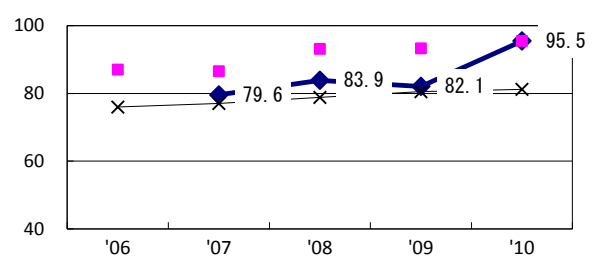
TB statistics in 2010					
Population	820,317			(Japan)	
Foreign borns	12	9.5%		(4.1%)	
TB patients with homeless history	2	1.6%		(1.4%)	
Jobless TB patients getting public assistance, proportion among male TB patients aged 35-59 yrs	2	12.5%		(10.8%)	
Trends	'06	'07	'08	'09	'10
Notified cases	0	151	146	169	126
Rate per 100,000	0.0	18.6	18.0	20.8	15.4
Sputum smear pos. pul. cases	0	53	54	78	48
Rate per 100,000	0.0	6.5	6.6	9.6	5.9



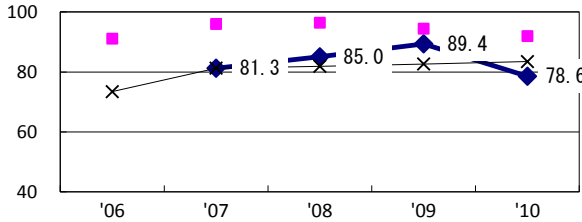
Proportion of cases with long case finding delay (>3M) among symptomatic pul. TB †



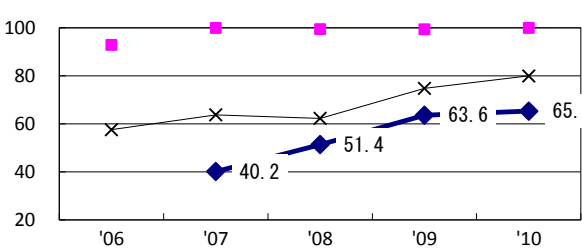
Proportion of Tx with HRZ-E/S among all forms of TB cases aged under 80 yrs\*



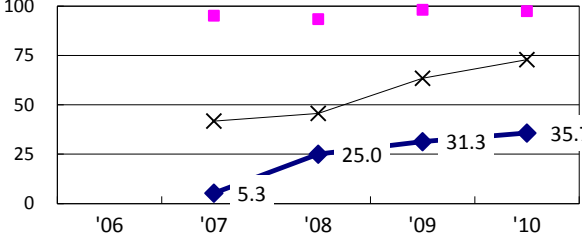
Proportion of bacillary cases among pul. TB



Proportion of culture results obtained among pul. TB

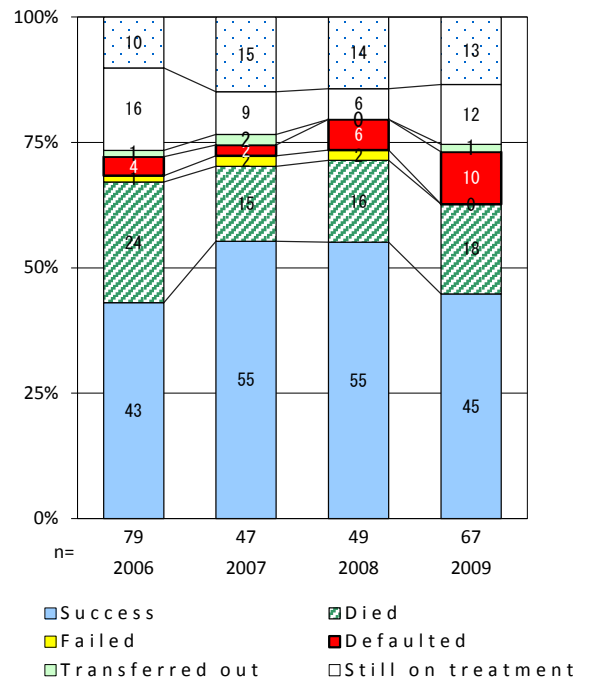


Proportion of DST results obtained among culture pos. pul. TB



◆ Hamamatsu    ■ Best prefec./city    × Japan

Treatment outcomes of new sputum smear-pos. pul. cases registered in 2006-2009



	'06	'07	'08	'09	'10	Year of registration	'07	'08	'09	Japan
†Excluding unknown delay(%)	0.0	34.4	36.5	71.0	24.2	Median days of treatment (all forms)	211	231	273	(270)
‡Excluding unknown Tx (%)	0.0	4.1	11.2	7.8	10.7	Median days of hospitalization (pul.TB)	75	102	92	(68)