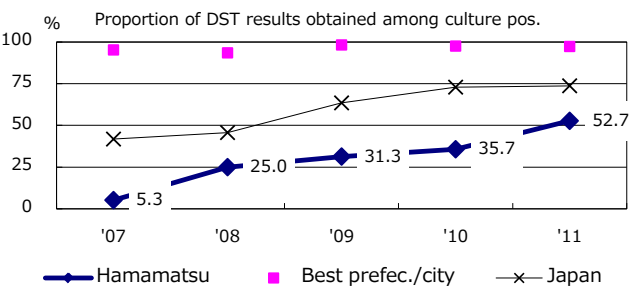
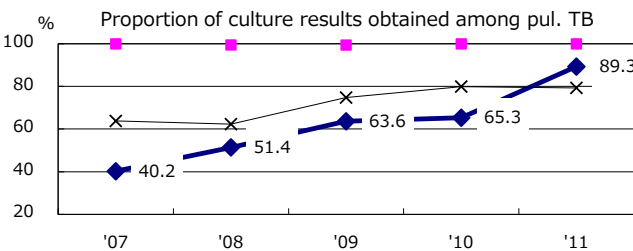
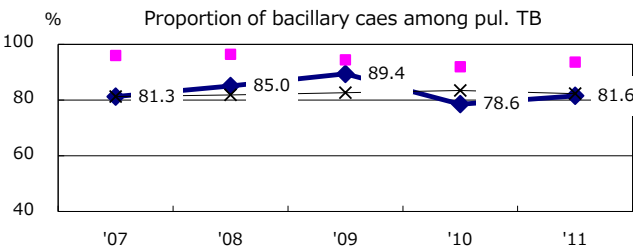
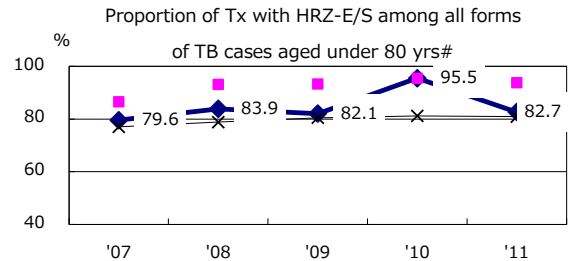
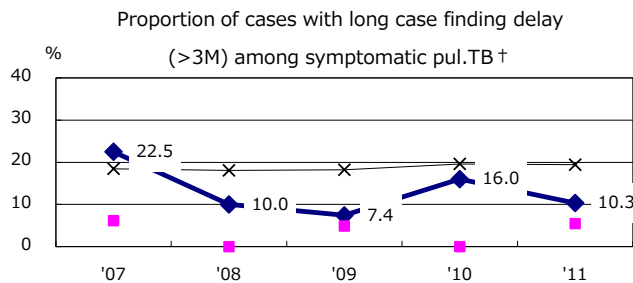
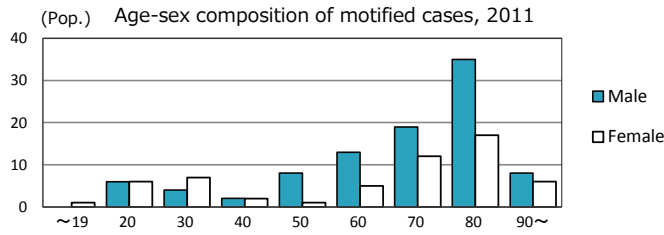
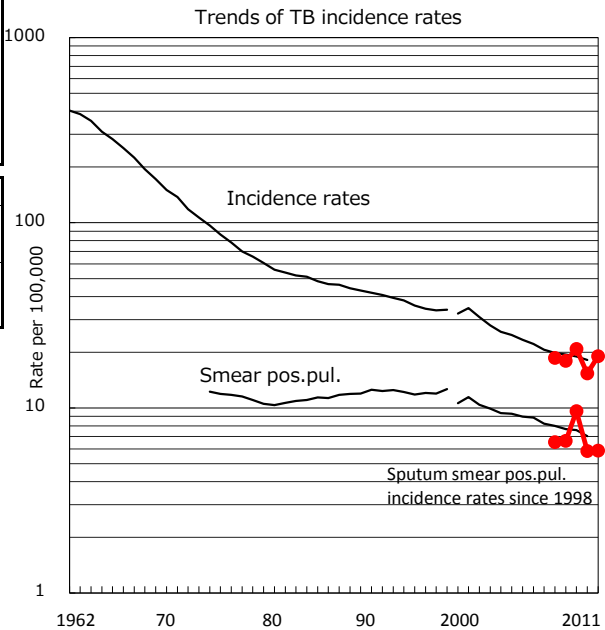
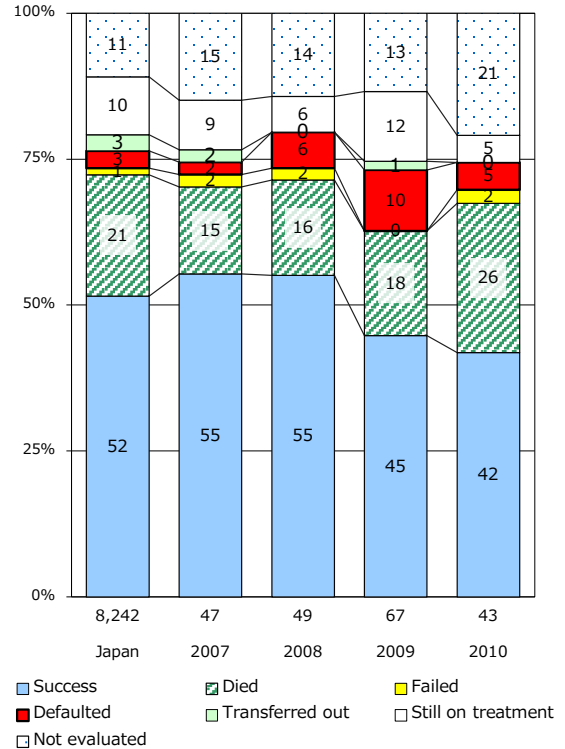


TB statistics in 2011		
Population	798,924	(Japan)
Foreign borns	10	6.6% (4.1%)
TB patients with homeless history	2	1.3% (1.4%)
Jobless TB patients getting public assistance, proportion among male TB patients aged 35-59 yrs	1	7.1% (10.6%)

Trends	'07	'08	'09	'10	'11
Notified cases	151	146	169	126	152
Rate per 100,000	18.6	18.0	20.8	15.4	19.0
Sputum smear pos. pul. cases	53	54	78	48	47
Rate per 100,000	6.5	6.6	9.6	5.9	5.9



Treatment outcomes of new sputum smear-pos. cases registered in 2007-2010



	'07	'08	'09	'10	'11	Year of registration	'07	'08	'09	'10	Japan
† Excluding unknown delay(%)	34.4	36.5	71.0	24.2	56.7	Median days of treatment (all forms)	211	231	273	196	(272)
# Excluding unknown Tx(%)	4.1	11.2	7.8	10.7	5.8	Median days of hospitalization (pul.TB)	75	102	92	89	(65)