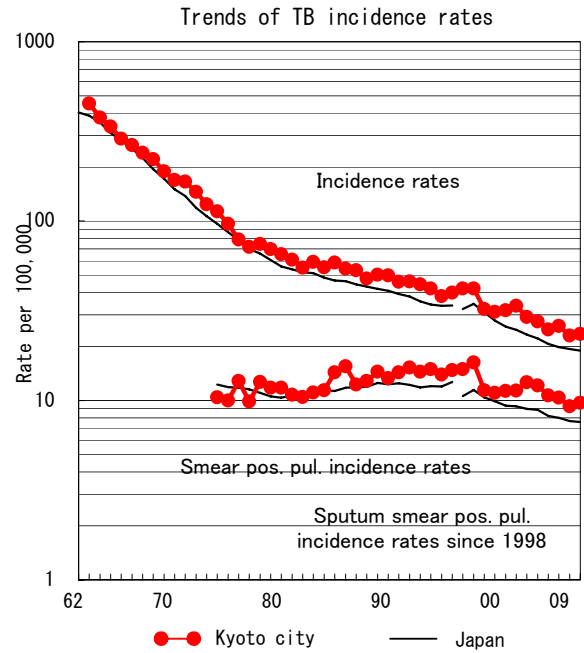
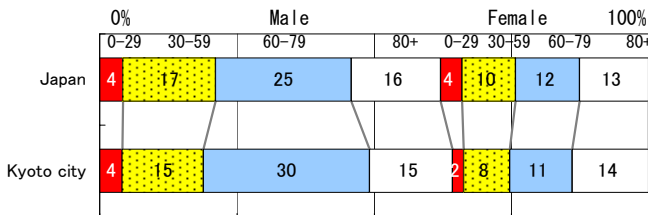


# Kyoto city

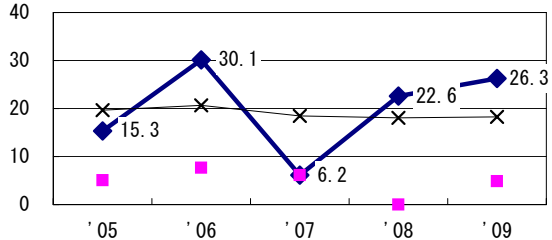
TB statistics in 2009		
Population	1,465,816	(Japan)
Foreigners	11	3.2% (3.9%)
Estimated homeless or poor TB among male cases aged 30-59 yrs	7	13.7% (12.0%)

Trends	'05	'06	'07	'08	'09
Notified cases	407	366	382	337	344
Rate per 100,000	27.6	24.9	26.0	23.0	23.5
Sputum smear pos. pul. cases	179	157	152	136	142
Rate per 100,000	12.1	10.7	10.4	9.3	9.7

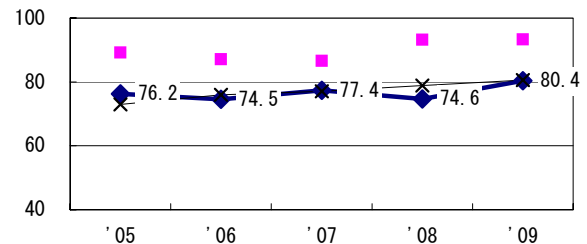
Age-sex composition of notified cases, 2009



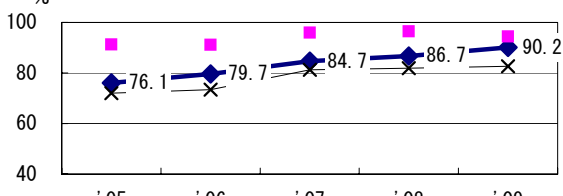
Proportion of cases with long case finding delay (>3M) among symptomatic pul. TB †



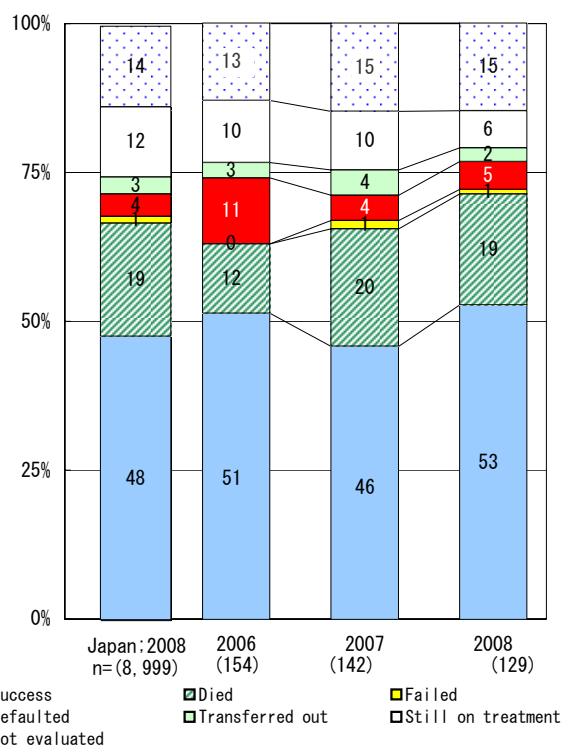
Proportion of Tx with HRZ-E/S among all forms of TB cases aged under 80 yrs ‡



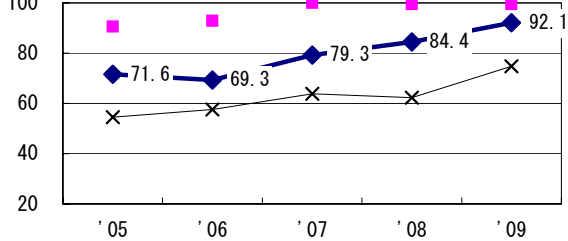
Proportion of bacillary cases among pul. TB



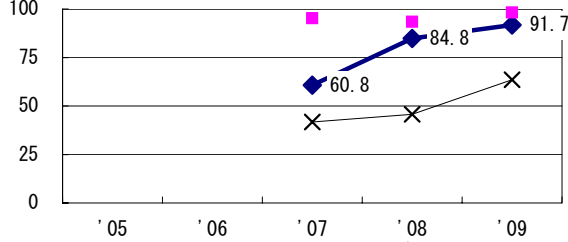
Treatment outcomes of new sputum smear-pos. pul. cases registered in 2006-2008



Proportion of culture results obtained among pul. TB



Proportion of DST results obtained among culture pos. pul. TB



	'05	'06	'07	'08	'09
† Excluding unk delay (%)	9.9	11.5	44.9	0.5	0.0
‡ Excluding unk Tx (%)	3.4	0.4	2.2	1.0	0.4

Registered year	'07	'08	Japan
Median days of treatment (all forms)	260	235	(272)
Median days of hospitalization (pul. TB)	60	54	(67)