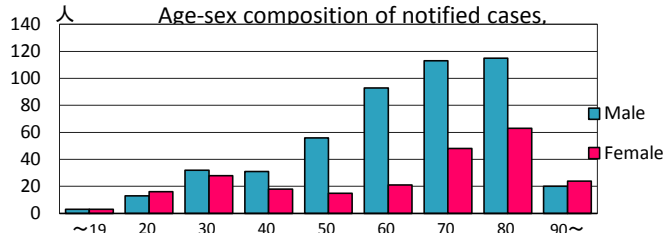
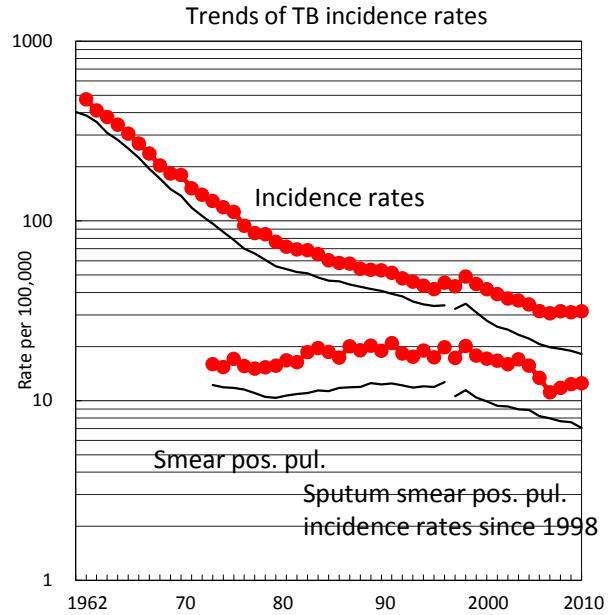
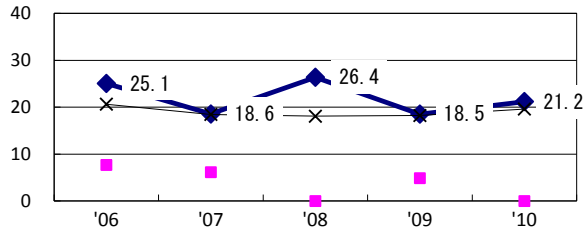


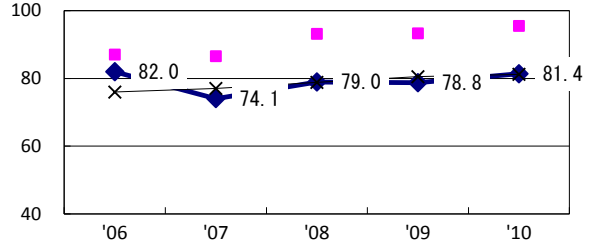
TB statistics in 2010					
Population	2,263,907			(Japan)	
Foreign borns	33	4.6%		(4.1%)	
TB patients with homeless history	20	2.8%		(1.4%)	
Jobless TB patients getting public assistance, proportion among male TB patients aged 35-59 yrs	15	12.6%		(10.8%)	
Trends	'06	'07	'08	'09	'10
Notified cases	700	685	707	701	712
Rate per 100,000	31.5	30.6	31.5	31.0	31.5
Sputum smear pos. pul. cases	298	249	265	279	283
Rate per 100,000	13.4	11.1	11.8	12.4	12.5



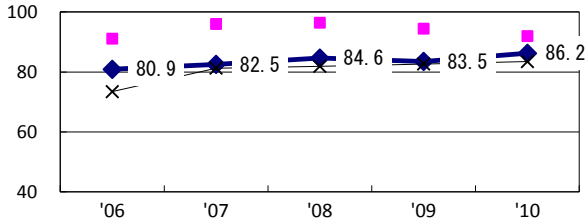
Proportion of cases with long case finding delay (>3M) among symptomatic pul. TB †



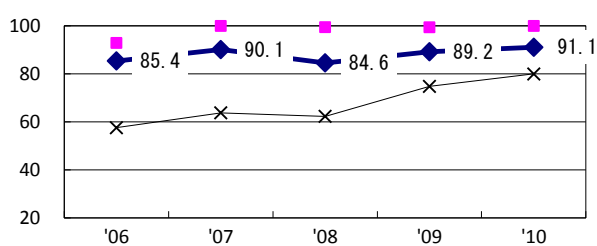
Proportion of Tx with HRZ-E/S among all forms of TB cases aged under 80 yrs‡



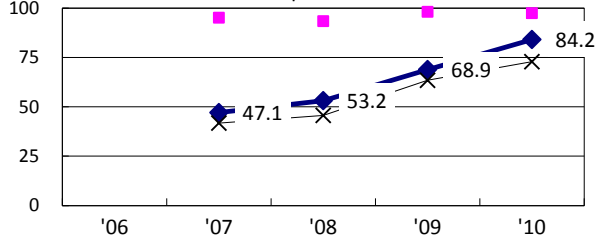
Proportion of bacillary cases among pul. TB



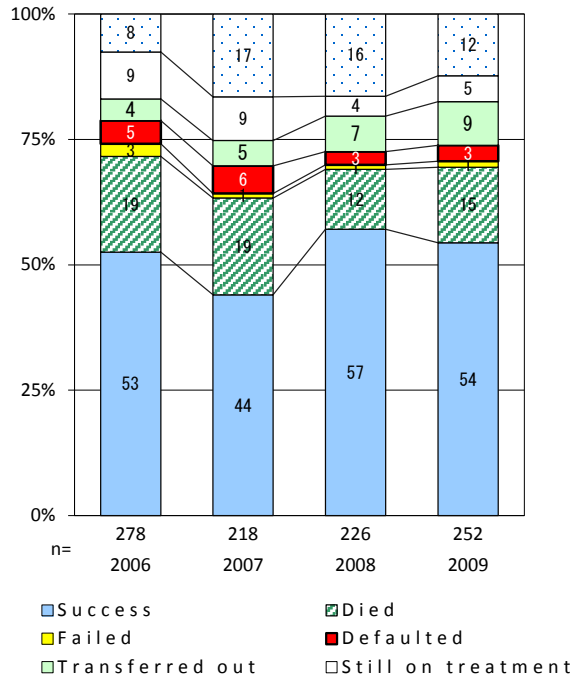
Proportion of culture results obtained among pul. TB



Proportion of DST results obtained among culture pos. pul. TB



Treatment outcomes of new sputum smear-pos. pul. cases registered in 2006-2009



◆ Nagoya ■ Best prefec./city × Japan

†Excluding unknown delay(%)	'06	'07	'08	'09	'10	Year of registration	'07	'08	'09	Japan
‡Excluding unknown Tx (%)	3.2	3.2	17.6	20.7	19.9	Median days of treatment (all forms)	274	254	253	(270)
	1.9	1.9	3.4	2.0	3.5	Median days of hospitalization (pul.TB)	75	74	86	(68)