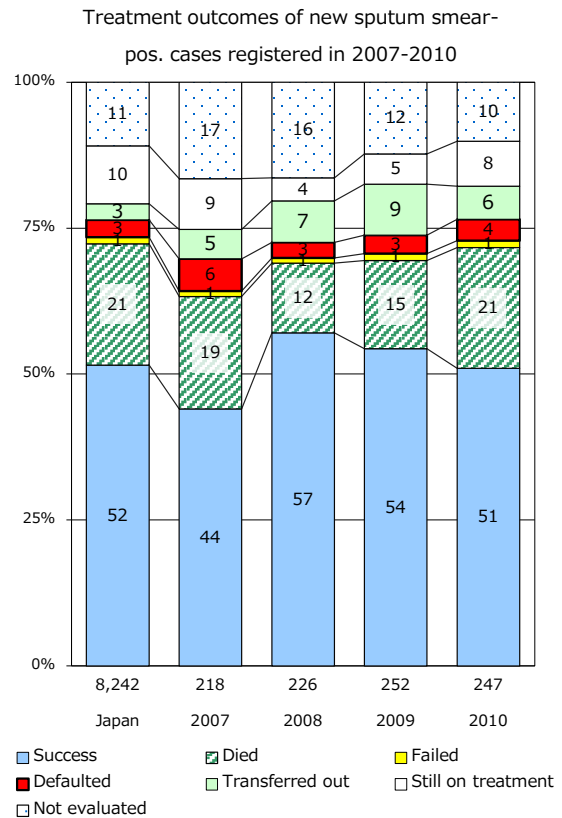
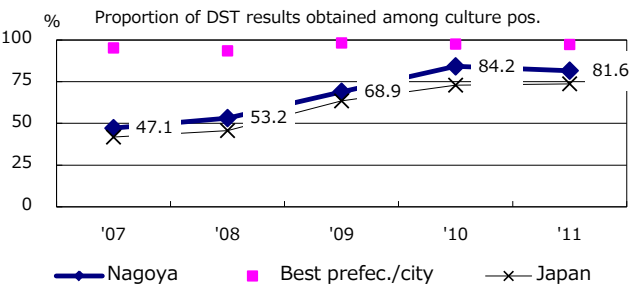
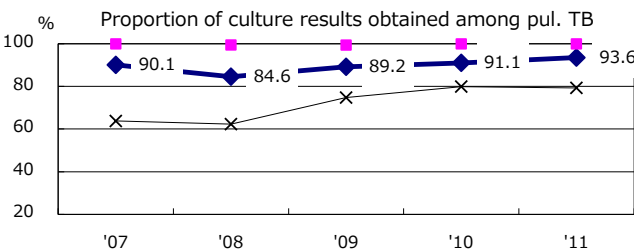
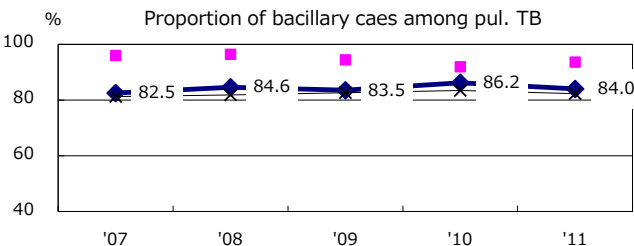
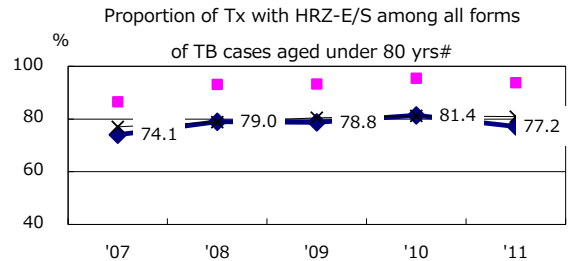
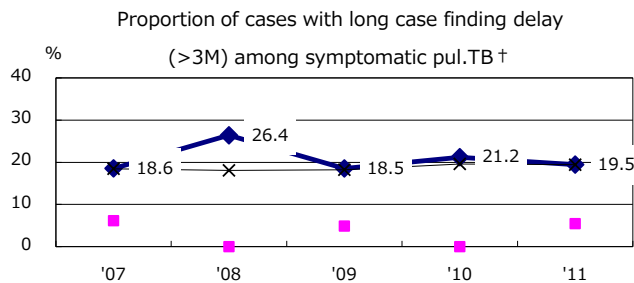
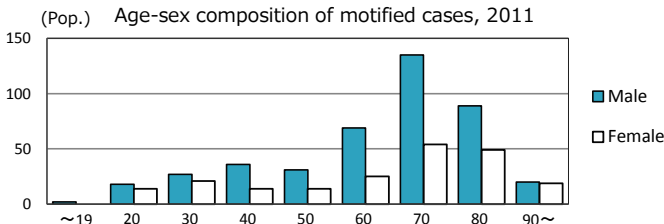
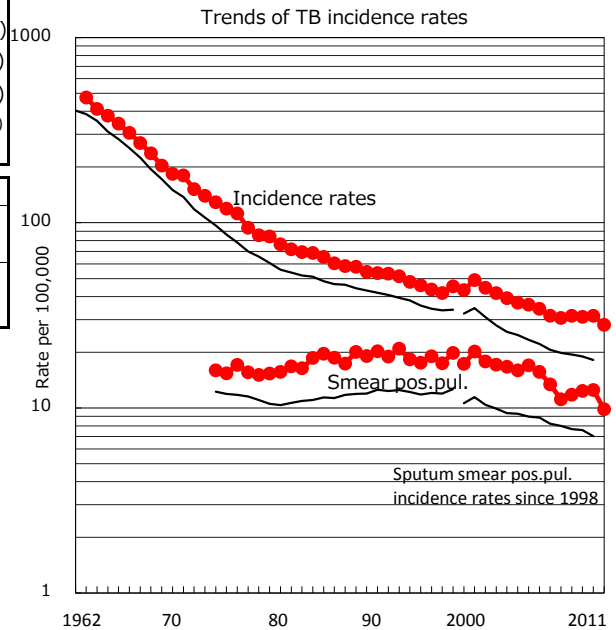


TB statistics in 2011		
Population	2,266,517	(Japan)
Foreign borns	36	5.7% (4.1%)
TB patients with homeless history	15	2.4% (1.4%)
Jobless TB patients getting public assistance, proportion among male TB patients aged 35-59 yrs	10	10.6% (10.6%)

Trends	'07	'08	'09	'10	'11
Notified cases	685	707	701	712	637
Rate per 100,000	30.6	31.5	31.0	31.5	28.1
Sputum smear pos. pul. cases	249	265	279	283	223
Rate per 100,000	11.1	11.8	12.4	12.5	9.8



	'07	'08	'09	'10	'11	Year of registration	'07	'08	'09	'10	Japan
† Excluding unknown delay(%)	3.2	17.6	20.7	19.9	12.5	Median days of treatment (all forms)	274	254	253	265	(272)
# Excluding unknown Tx(%)	1.9	3.4	2.0	3.5	1.7	Median days of hospitalization (pul. TB)	75	74	86	72	(65)