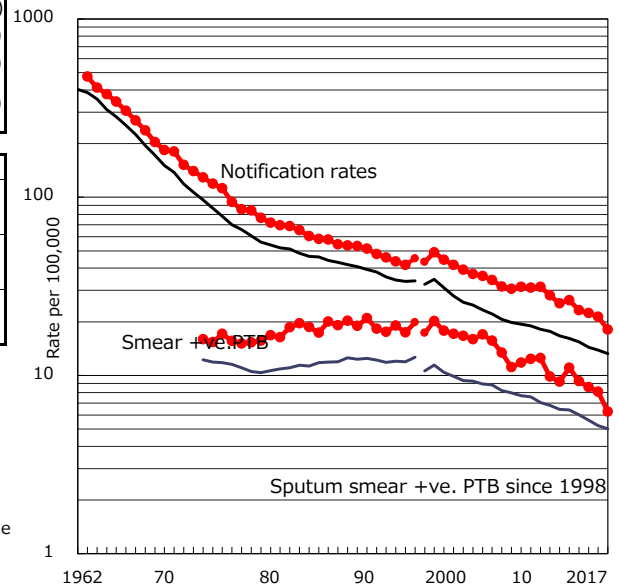


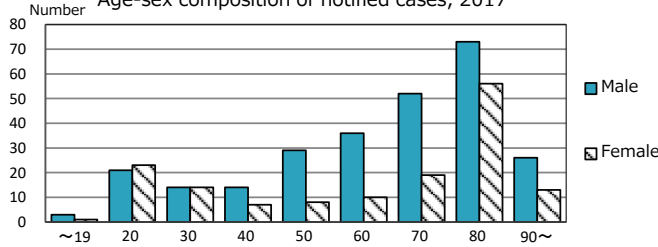
TB statistics in 2017 (Population in Nagoya C. 2,314,125)	
Among newly notified : (Japan)	
Foreign borns	61 14.6% (9.1%)
TB cases with homeless history	11 2.6% (0.9%)
Male aged 35-59, without job and receiving public assistance	5 8.8% (7.3%)

Trends	'13	'14	'15	'16	2017
Notified cases	601	528	514	494	419
Rate per 100,000 population	26.5	23.2	22.4	21.3	18.1
Sputum smear +ve. PTB	251	211	197	187	145
Rate per 100,000 population	11.1	9.3	8.6	8.1	6.3
Latent Tuberculosis Infection	178	206	168	147	132
Rate per 100,000 population	7.8	9.0	7.3	6.4	5.7

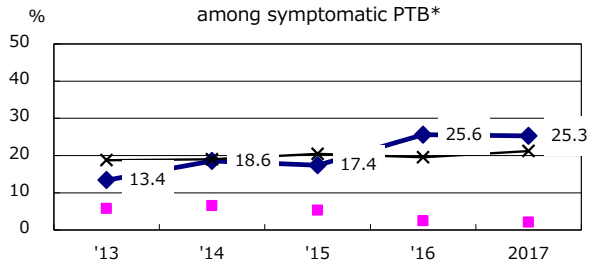
Trends of TB notification rates, all forms and smear +ve.PTB



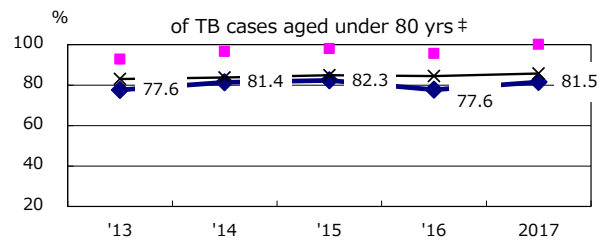
Age-sex composition of notified cases, 2017



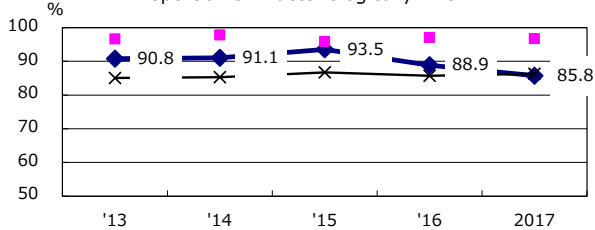
Proportion of cases with total diagnosis delay (> 3 mths) among symptomatic PTB*



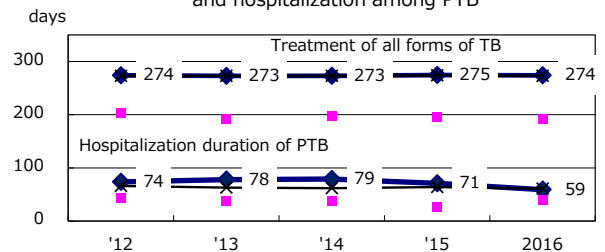
Proportion of TX with HRZ-E/S among all forms of TB cases aged under 80 yrs †



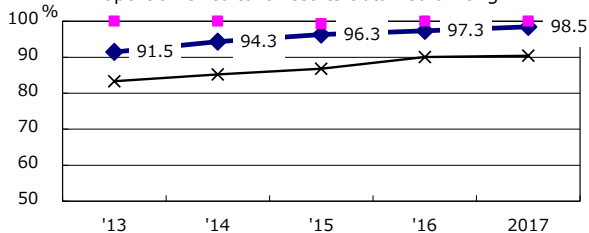
Proportion of Bacteriologically +ve. PTB



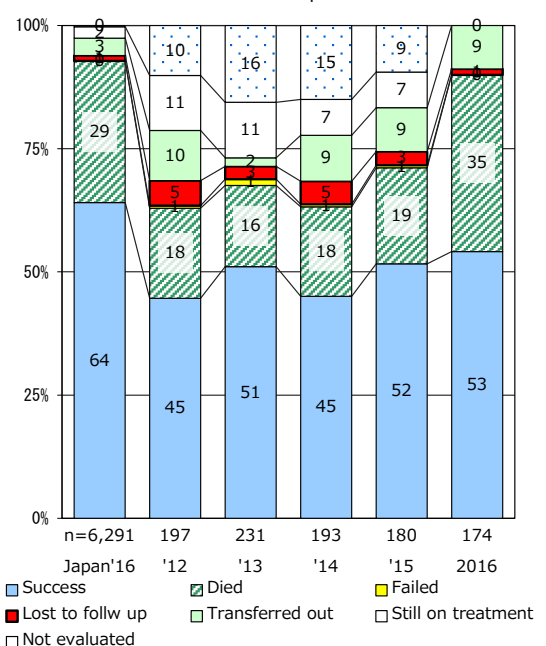
Median duration of treatment of all forms and hospitalization among PTB



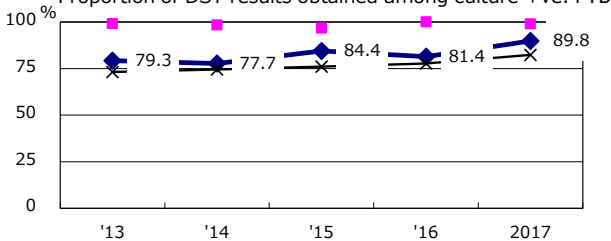
Proportion of culture results obtained among PTB



Treatment outcomes of new sputum smear +ve.TB



Proportion of DST results obtained among culture +ve. PTB



PTB : pulmonary TB

† Excluding unknown delay(%)	'13	'14	'15	'16	2017
	20.2	25.2	19.4	18.2	17.0

‡ Excluding unknown Tx(%)	'13	'14	'15	'16	2017
	2.3	3.4	0.7	3.8	3.2