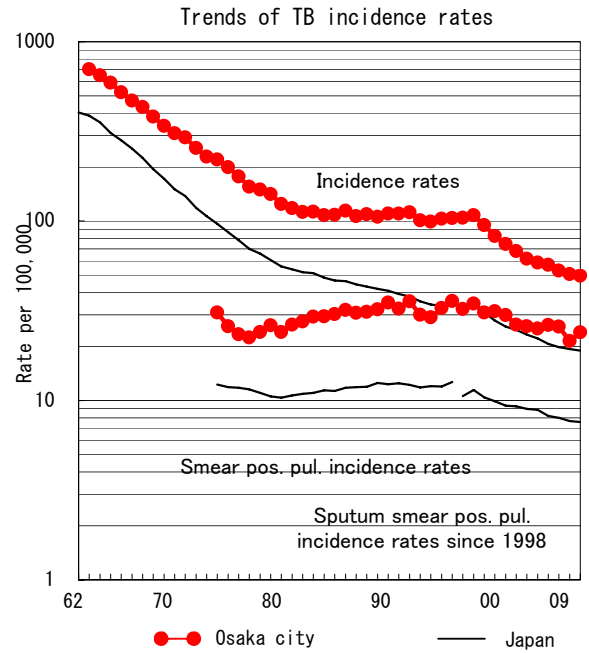
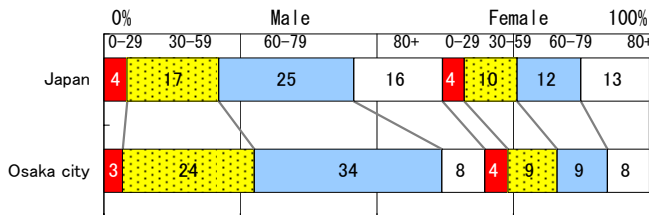


# Osaka city

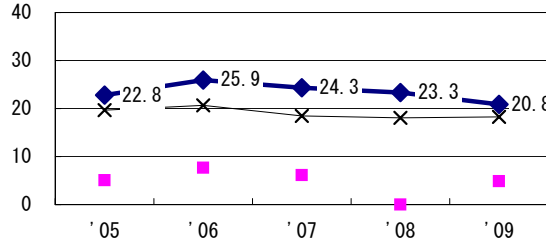
| TB statistics in 2009   |           |               |
|---|-----------|---------------|
| Population  | 2,661,700 | (Japan)       |
| Foreigners  | 37        | 2.8% (3.9%)   |
| Estimated homeless or poor TB among male cases aged 30-59 yrs | 109       | 34.2% (12.0%) |

| Trends                       | '05   | '06   | '07   | '08   | '09   |
|------------------------------|-------|-------|-------|-------|-------|
| Notified cases               | 1,545 | 1,501 | 1,399 | 1,343 | 1,321 |
| Rate per 100,000             | 58.8  | 57.0  | 52.9  | 50.6  | 49.6  |
| Sputum smear pos. pul. cases | 663   | 693   | 683   | 569   | 637   |
| Rate per 100,000             | 25.2  | 26.3  | 25.8  | 21.5  | 23.9  |

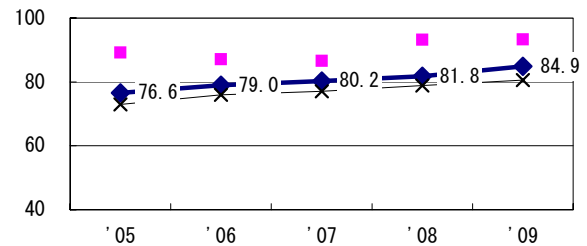
Age-sex composition of notified cases, 2009



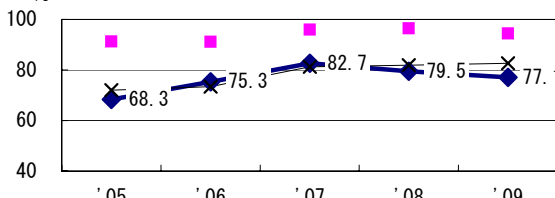
Proportion of cases with long case finding delay (>3M) among symptomatic pul. TB †



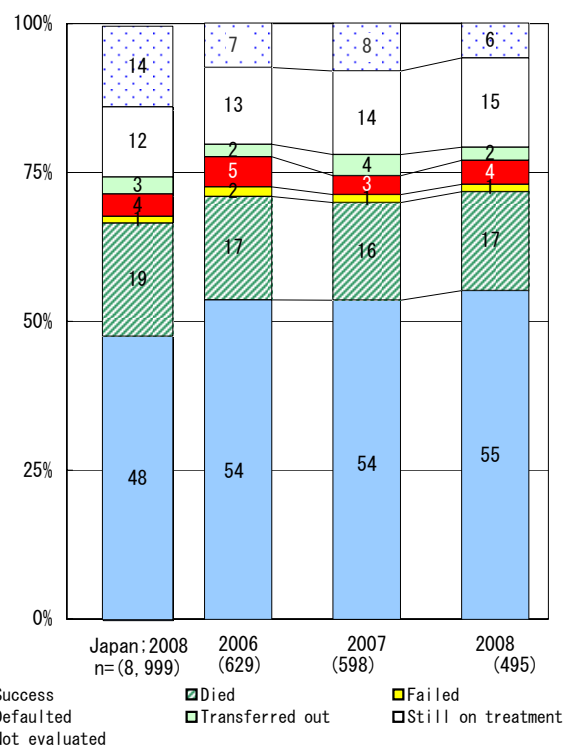
Proportion of Tx with HRZ-E/S among all forms of TB cases aged under 80 yrs ‡



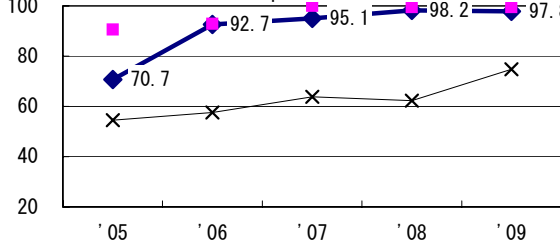
Proportion of bacillary cases among pul. TB



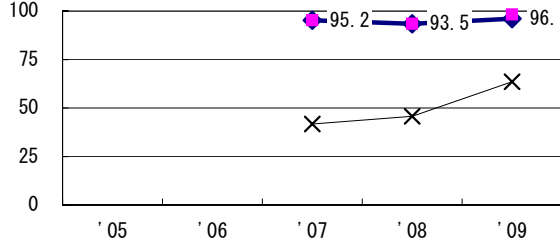
Treatment outcomes of new sputum smear-pos. pul. cases registered in 2006-2008



Proportion of culture results obtained among pul. TB



Proportion of DST results obtained among culture pos. pul. TB



|                           | '05  | '06 | '07 | '08 | '09 |
|---------------------------|------|-----|-----|-----|-----|
| † Excluding unk delay (%) | 11.2 | 8.9 | 1.7 | 3.3 | 1.3 |
| ‡ Excluding unk Tx (%)    | 0.2  | 0.4 | 1.2 | 0.1 | 0.9 |

| Registered year                          | '07 | '08 | Japan |
|--|-----|-----|-------|
| Median days of treatment (all forms)     | 275 | 275 | (272) |
| Median days of hospitalization (pul. TB) | 79  | 78  | (67)  |