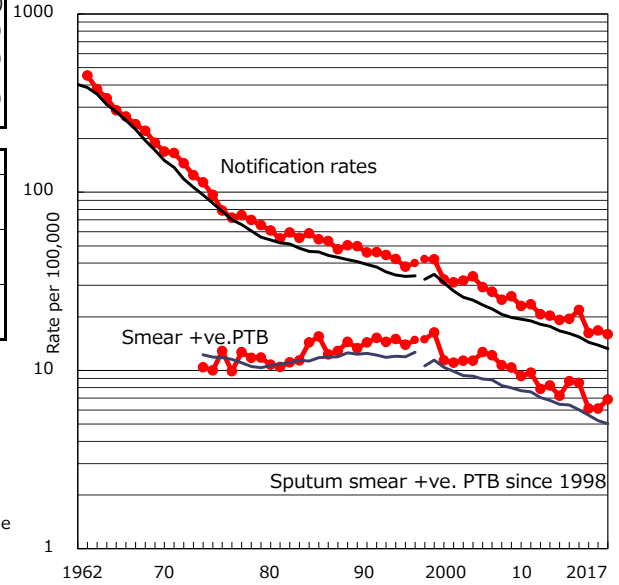


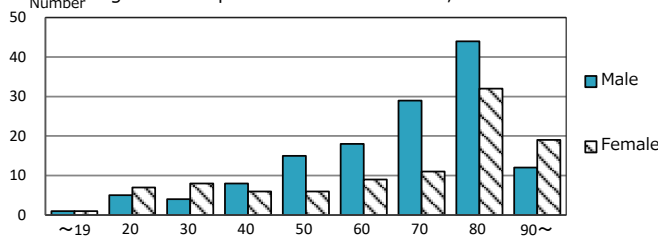
TB statistics in 2017 ( Population in Kyoto C. 1,472,027 )	
Among newly notified : (Japan)	
Foreign borns	14 6.0% (9.1%)
TB cases with homeless history	2 0.9% (0.9%)
Male aged 35-59, without job and receiving public assistance	0 0.0% (7.3%)

Trends	'13	'14	'15	'16	2017
Notified cases	286	321	239	246	235
Rate per 100,000 population	19.4	21.8	16.2	16.7	16.0
Sputum smear +ve. PTB	128	125	90	90	101
Rate per 100,000 population	8.7	8.5	6.1	6.1	6.9
Latent Tuberculosis Infection	87	107	92	85	129
Rate per 100,000 population	5.9	7.3	6.2	5.8	8.8

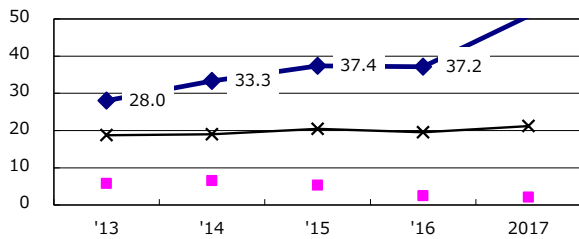
Trends of TB notification rates, all forms and smear +ve.PTB



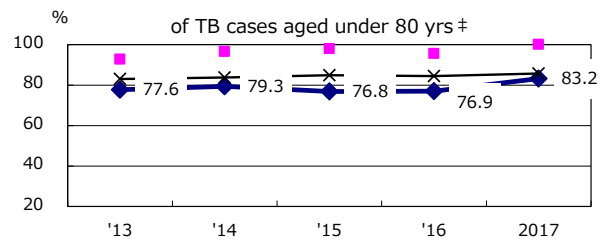
Age-sex composition of notified cases, 2017



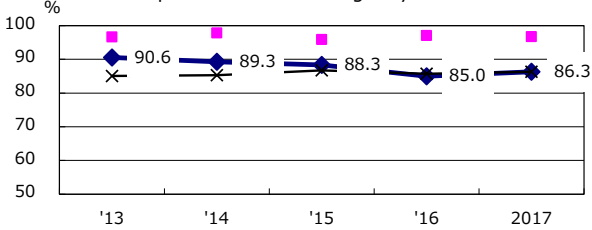
Proportion of cases with total diagnosis delay(> 3 mths) among symptomatic PTB\*



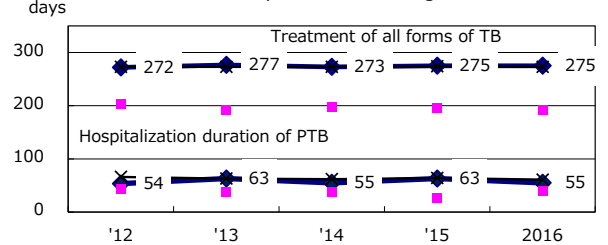
Proportion of TX with HRZ-E/S among all forms of TB cases aged under 80 yrs †



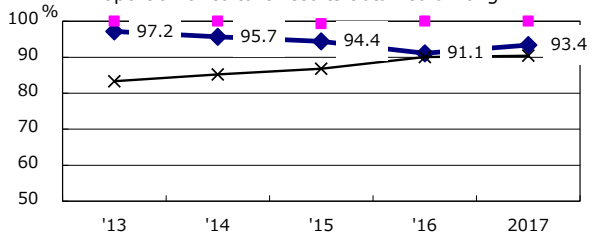
Proportion of Bacteriologically +ve. PTB



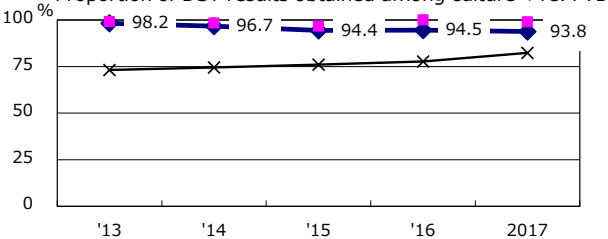
Median duration of treatment of all forms and hospitalization among PTB



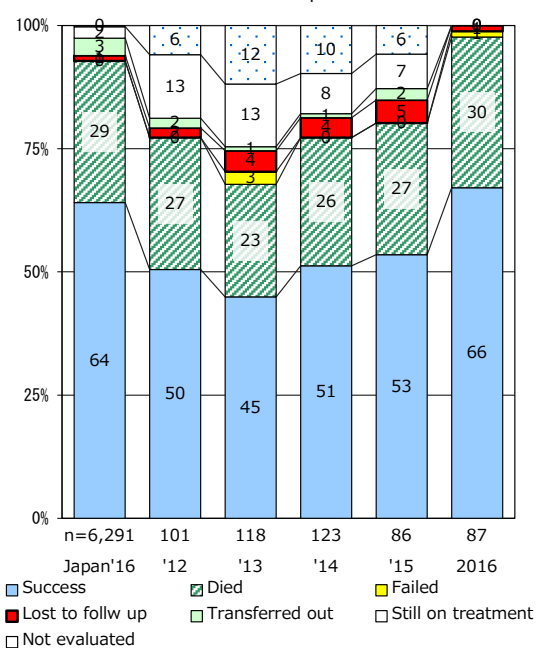
Proportion of culture results obtained among PTB



Proportion of DST results obtained among culture +ve. PTB



Treatment outcomes of new sputum smear +ve.TB



PTB : pulmonary TB

† Excluding unknown delay(%)	'13	'14	'15	'16	2017
	4.1	1.7	4.7	4.0	10.3

‡ Excluding unknown Tx(%)	'13	'14	'15	'16	2017
	1.2	0.0	2.1	5.1	2.3