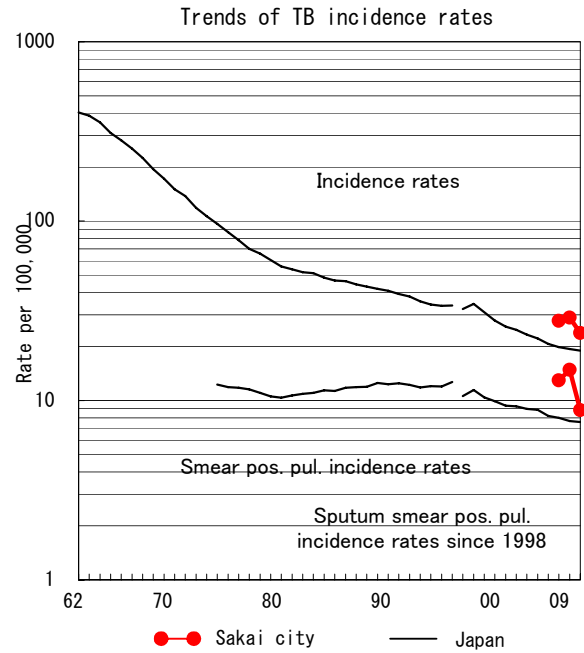
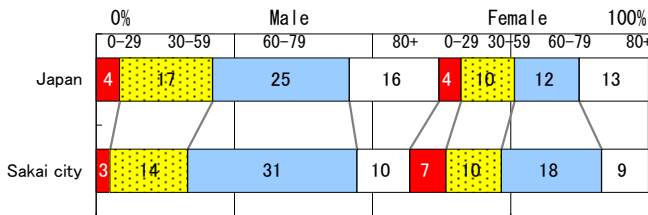


Sakai city

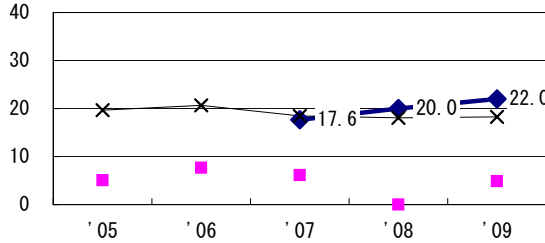
TB statistics in 2009		
Population	837,853	(Japan)
Foreigners	2	1.0% (3.9%)
Estimated homeless or poor TB among male cases aged 30-59 yrs	2	7.1% (12.0%)

Trends	'05	'06	'07	'08	'09
Notified cases	-	-	232	242	199
Rate per 100,000	-	-	27.8	28.9	23.8
Sputum smear pos. pul. cases	-	-	108	124	74
Rate per 100,000	-	-	12.9	14.8	8.8

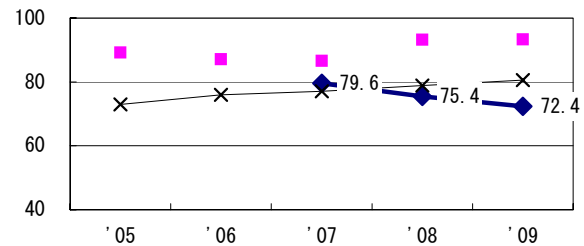
Age-sex composition of notified cases, 2009



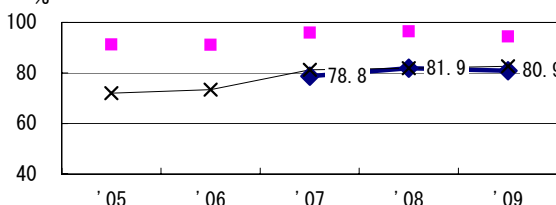
Proportion of cases with long case finding delay (>3M) among symptomatic pul. TB †



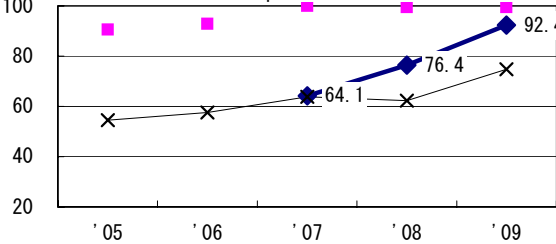
Proportion of Tx with HRZ-E/S among all forms of TB cases aged under 80 yrs ‡



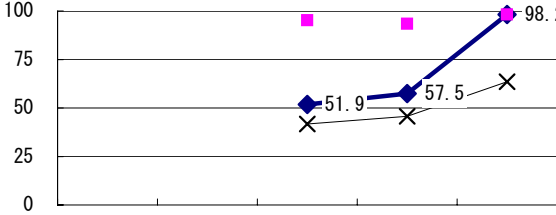
Proportion of bacillary cases among pul. TB



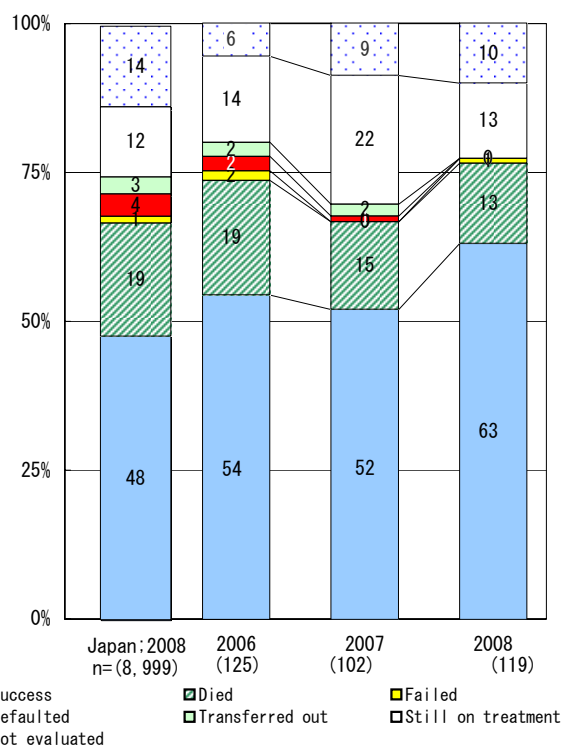
Proportion of culture results obtained among pul. TB



Proportion of DST results obtained among culture pos. pul. TB



Treatment outcomes of new sputum smear-pos. pul. cases registered in 2006-2008



† Excluding unk delay (%)
 ‡ Excluding unk Tx (%)

Registered year
 Median days of treatment (all forms)
 Median days of hospitalization (pul. TB)