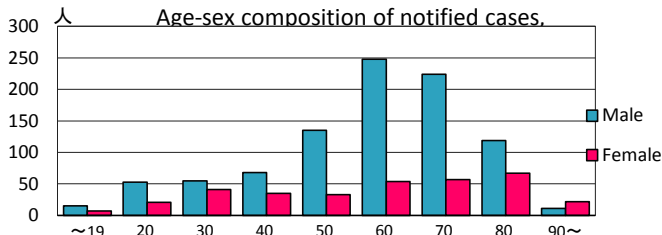
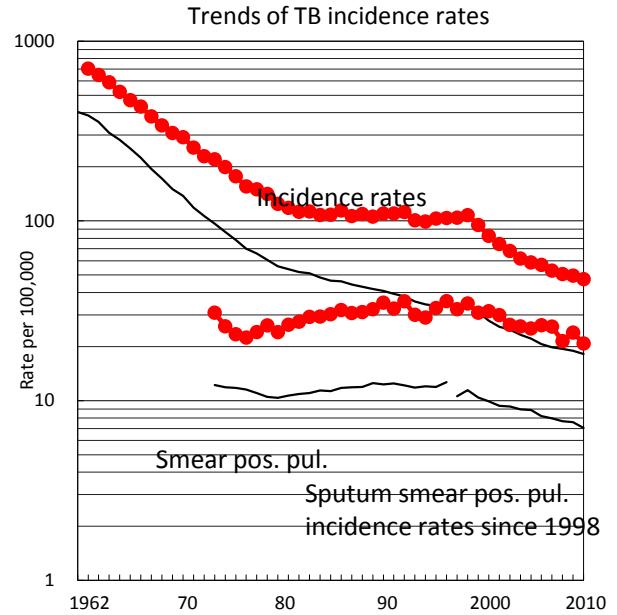
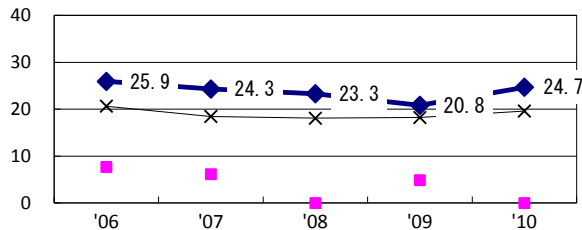


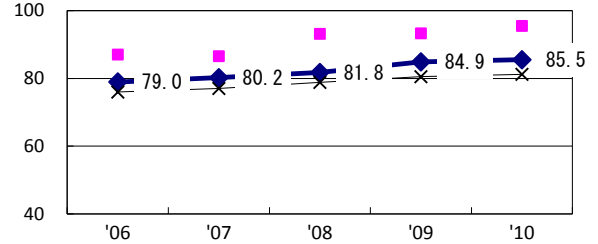
TB statistics in 2010					
Population	2,666,371			(Japan)	
Foreign borns	33	2.6%		(4.1%)	
TB patients with homeless history	6	0.5%		(1.4%)	
Jobless TB patients getting public assistance, proportion among male TB patients aged 35-59 yrs	97	37.6%		(10.8%)	
Trends	'06	'07	'08	'09	'10
Notified cases	1,501	1,399	1,343	1,321	1,265
Rate per 100,000	57.0	52.9	50.6	49.6	47.4
Sputum smear pos. pul. cases	693	683	569	637	555
Rate per 100,000	26.3	25.8	21.5	23.9	20.8



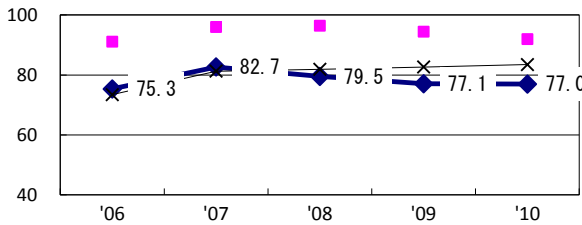
Proportion of cases with long case finding delay (>3M) among symptomatic pul. TB †



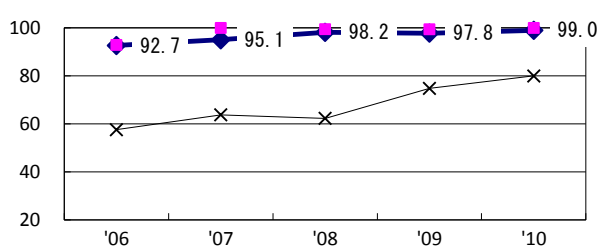
Proportion of Tx with HRZ-E/S among all forms of TB cases aged under 80 yrs*



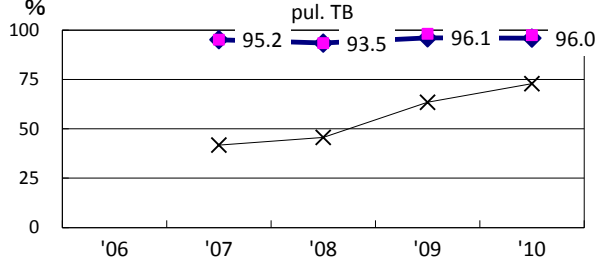
Proportion of bacillary cases among pul. TB



Proportion of culture results obtained among pul. TB

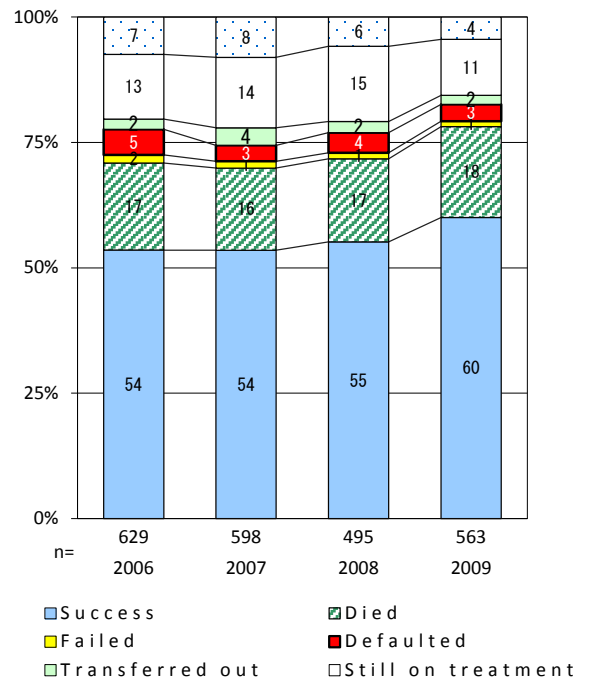


Proportion of DST results obtained among culture pos. pul. TB



◆ Osaka ■ Best prefec./city × Japan

Treatment outcomes of new sputum smear-pos. pul. cases registered in 2006-2009



	'06	'07	'08	'09	'10	Year of registration	'07	'08	'09	Japan
†Excluding unknown delay(%)	8.9	1.7	3.3	1.3	1.5	Median days of treatment (all forms)	275	275	273	(270)
‡Excluding unknown Tx (%)	0.4	2.3	1.1	2.0	1.5	Median days of hospitalization (pul.TB)	79	78	77	(68)