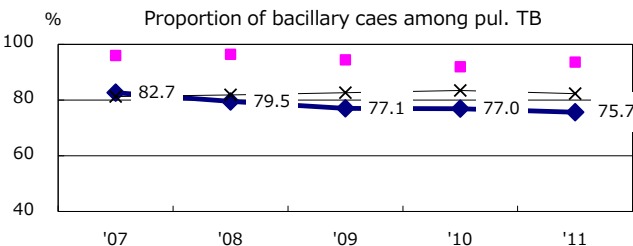
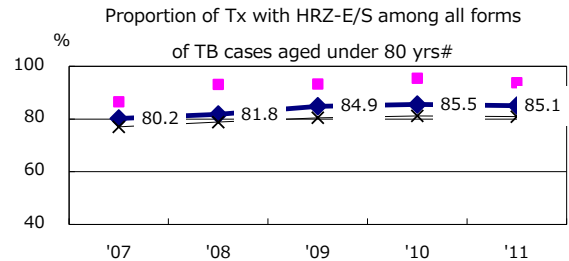
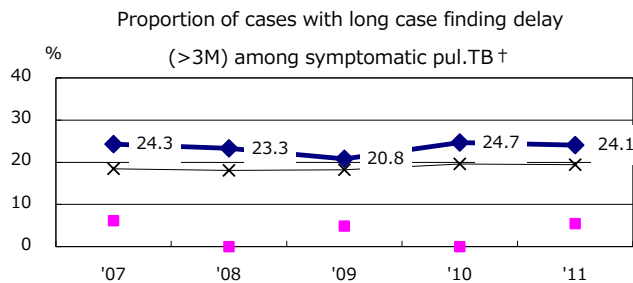
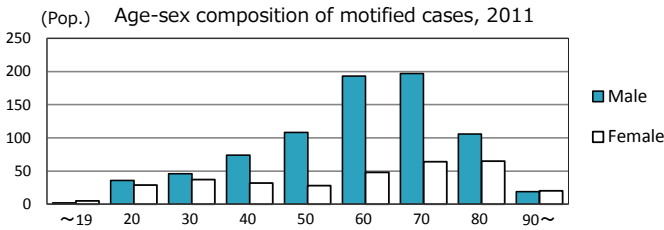
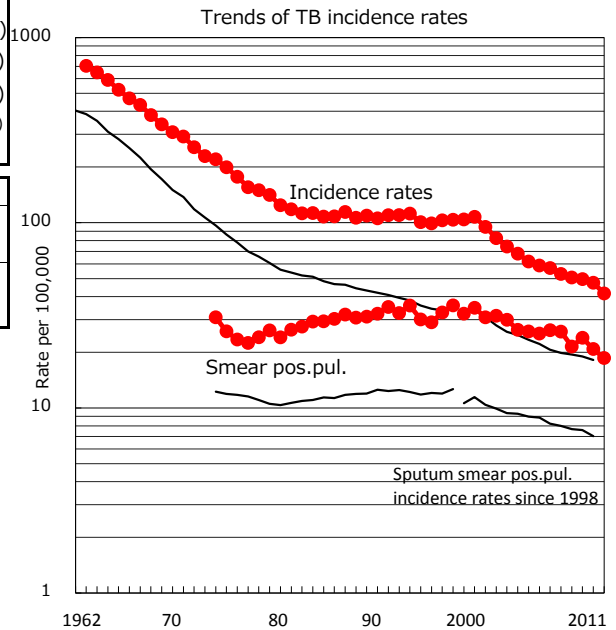
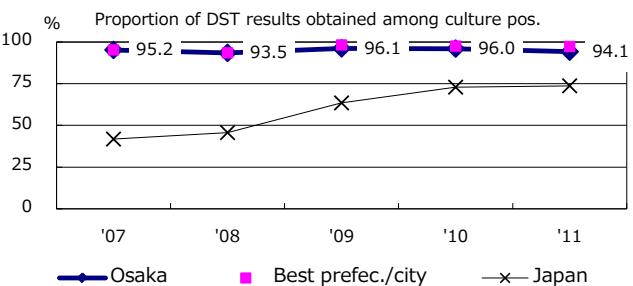
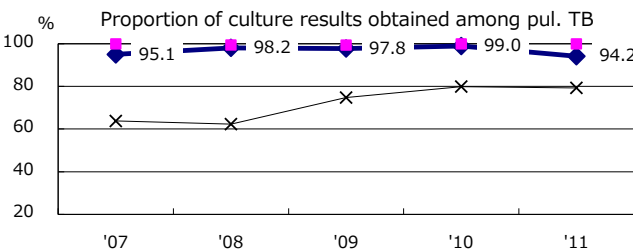
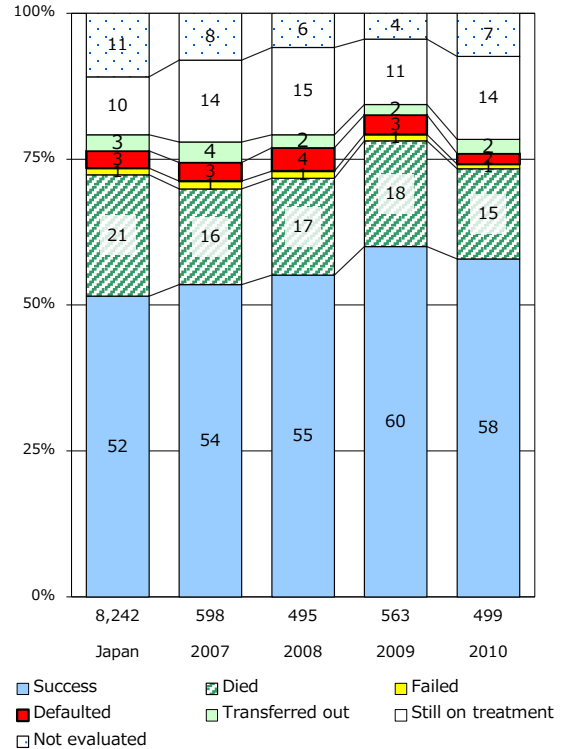


| TB statistics in 2011   |           |               |
|---|-----------|---------------|
| Population  | 2,670,579 | (Japan)       |
| Foreign borns   | 31        | 2.8% (4.1%)   |
| TB patients with homeless history   | 30        | 2.7% (1.4%)   |
| Jobless TB patients getting public assistance, proportion among male TB patients aged 35-59 yrs | 74        | 32.5% (10.6%) |

| Trends                     | '07   | '08   | '09   | '10   | '11   |
|----------------------------|-------|-------|-------|-------|-------|
| Notified cases             | 1,399 | 1,343 | 1,321 | 1,265 | 1,109 |
| Rate per 100,000           | 52.9  | 50.6  | 49.6  | 47.4  | 41.5  |
| Sputum smear pos.pul.cases | 683   | 569   | 637   | 555   | 497   |
| Rate per 100,000           | 25.8  | 21.5  | 23.9  | 20.8  | 18.6  |



Treatment outcomes of new sputum smear-pos. cases registered in 2007-2010



|                              | '07 | '08 | '09 | '10 | '11 | Year of registration                    | '07 | '08 | '09 | '10 | Japan |
|------------------------------|-----|-----|-----|-----|-----|---|-----|-----|-----|-----|-------|
| † Excluding unknown delay(%) | 1.7 | 3.3 | 1.3 | 1.5 | 1.2 | Median days of treatment (all forms)    | 275 | 275 | 273 | 274 | (272) |
| #Excluding unknown Tx(%)     | 2.3 | 1.1 | 2.0 | 1.5 | 1.3 | Median days of hospitalization (pul.TB) | 79  | 78  | 77  | 80  | (65)  |