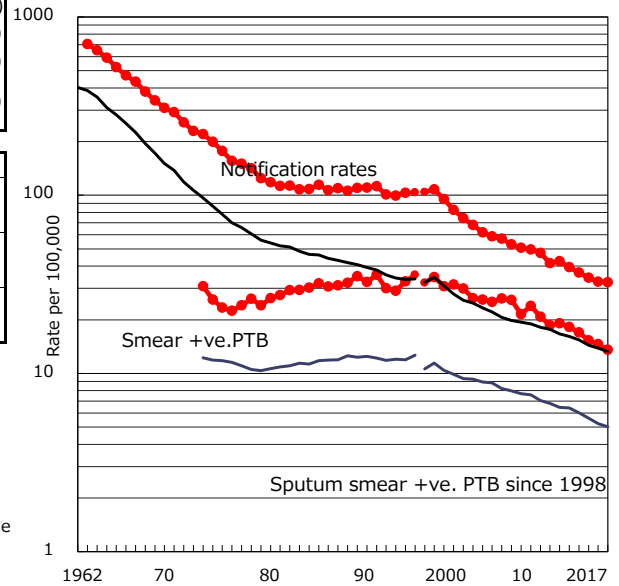


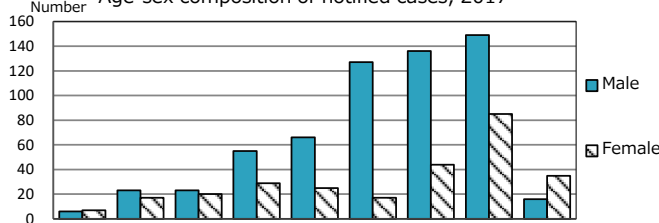
TB statistics in 2017 ( Population in Osaka C. 2,713,157 )	
Among newly notified : (Japan)	
Foreign borns	53 6.0% (9.1%)
TB cases with homeless history	31 3.5% (0.9%)
Male aged 35-59, without job and receiving public assistance	29 20.1% (7.3%)

Trends	'13	'14	'15	'16	2017
Notified cases	1,058	988	925	887	880
Rate per 100,000 population	39.4	36.8	34.4	32.7	32.4
Sputum smear +ve. PTB	488	456	412	394	368
Rate per 100,000 population	18.2	17.0	15.3	14.5	13.6
Latent Tuberculosis Infection	275	263	274	306	250
Rate per 100,000 population	10.2	9.8	10.2	11.3	9.2

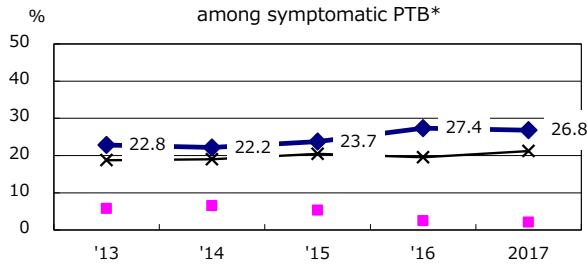
Trends of TB notification rates, all forms and smear +ve.PTB



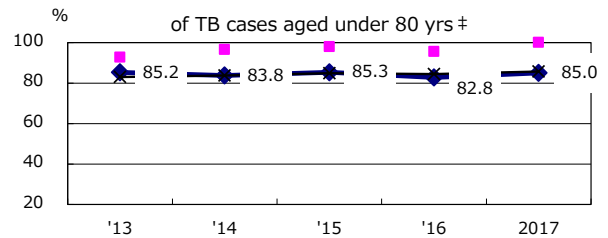
Age-sex composition of notified cases, 2017



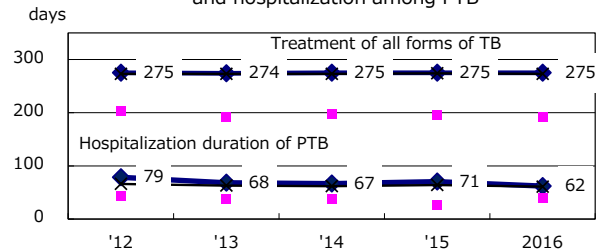
Proportion of cases with total diagnosis delay (> 3 mths) among symptomatic PTB\*



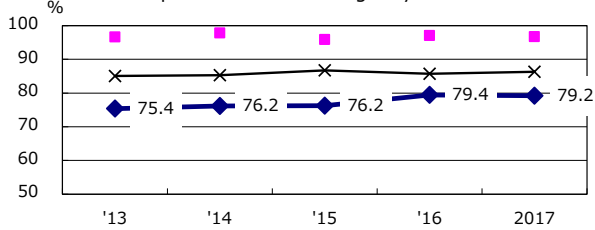
Proportion of TX with HRZ-E/S among all forms of TB cases aged under 80 yrs †



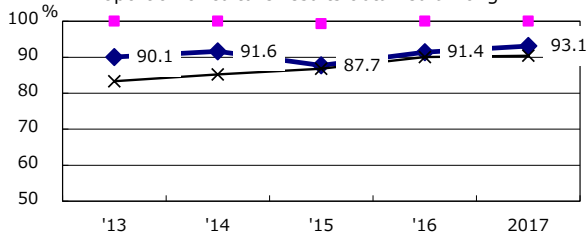
Median duration of treatment of all forms and hospitalization among PTB



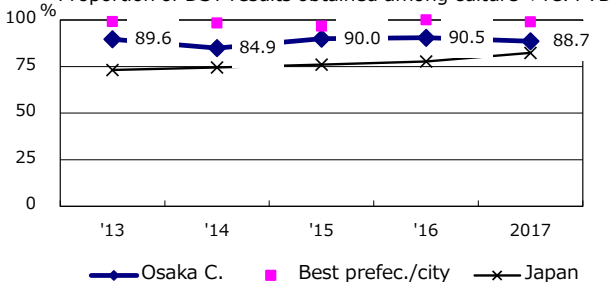
Proportion of Bacteriologically +ve. PTB



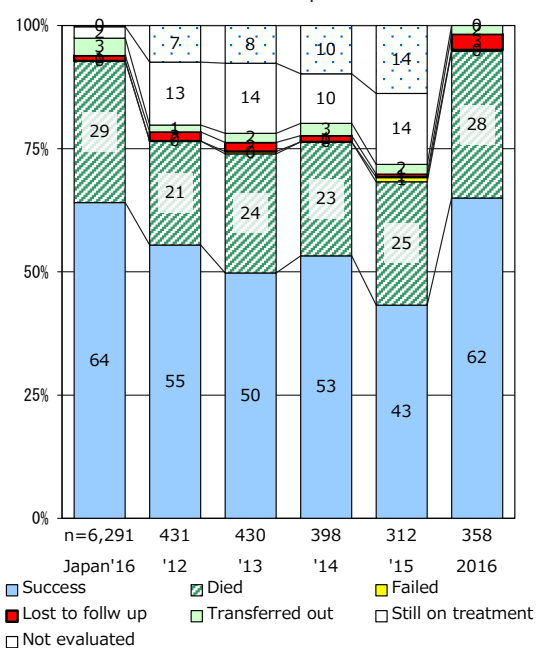
Proportion of culture results obtained among PTB



Proportion of DST results obtained among culture +ve. PTB



Treatment outcomes of new sputum smear +ve.TB



PTB : pulmonary TB

† Excluding unknown delay(%)	'13	'14	'15	'16	2017
	10.7	9.0	39.0	3.5	2.5

‡ Excluding unknown Tx(%)	'13	'14	'15	'16	2017
	3.5	2.6	3.2	2.6	3.7