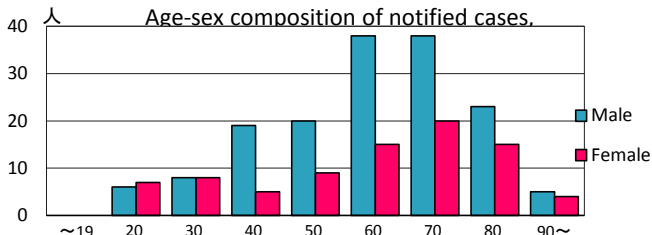
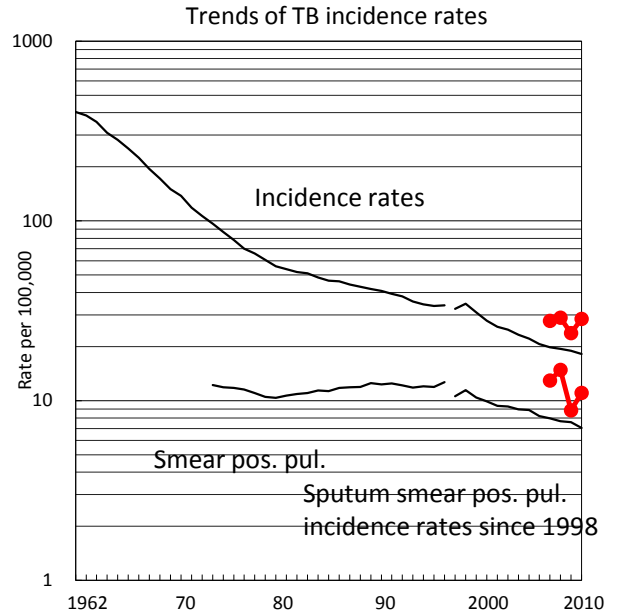
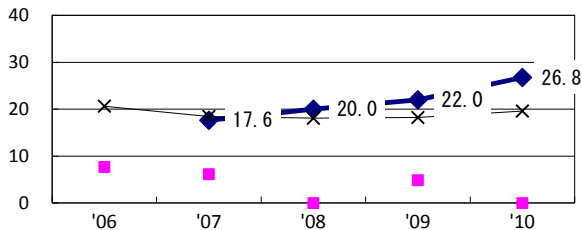


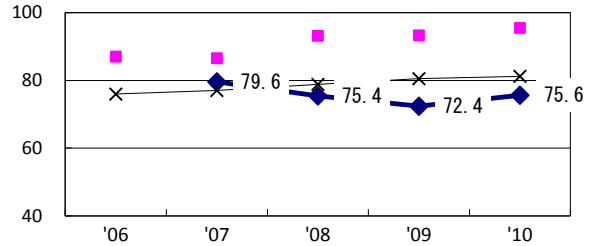
TB statistics in 2010					
Population	842,134			(Japan)	
Foreign borns	3	1.3%		(4.1%)	
TB patients with homeless history	3	1.3%		(1.4%)	
Jobless TB patients getting public assistance, proportion among male TB patients aged 35-59 yrs	7	14.9%		(10.8%)	
Trends	'06	'07	'08	'09	'10
Notified cases	0	232	242	199	240
Rate per 100,000	0.0	27.8	28.9	23.8	28.5
Sputum smear pos. pul. cases	0	108	124	74	93
Rate per 100,000	0.0	12.9	14.8	8.8	11.0



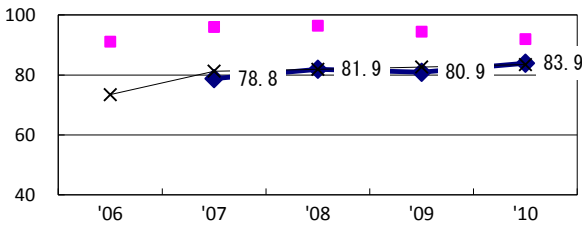
Proportion of cases with long case finding delay (>3M) among symptomatic pul. TB †



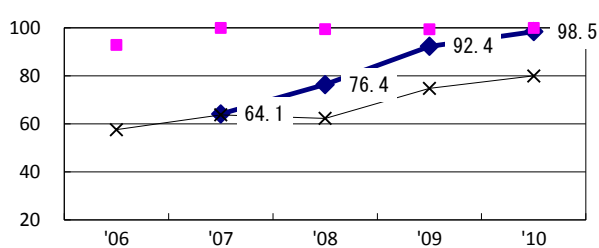
Proportion of Tx with HRZ-E/S among all forms of TB cases aged under 80 yrs*



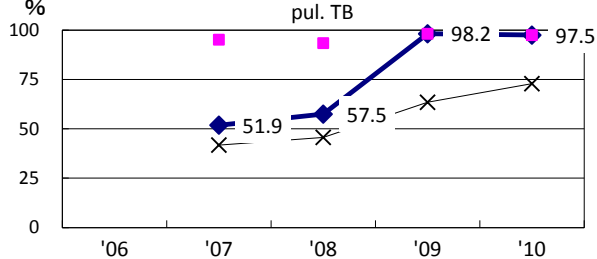
Proportion of bacillary cases among pul. TB



Proportion of culture results obtained among pul. TB

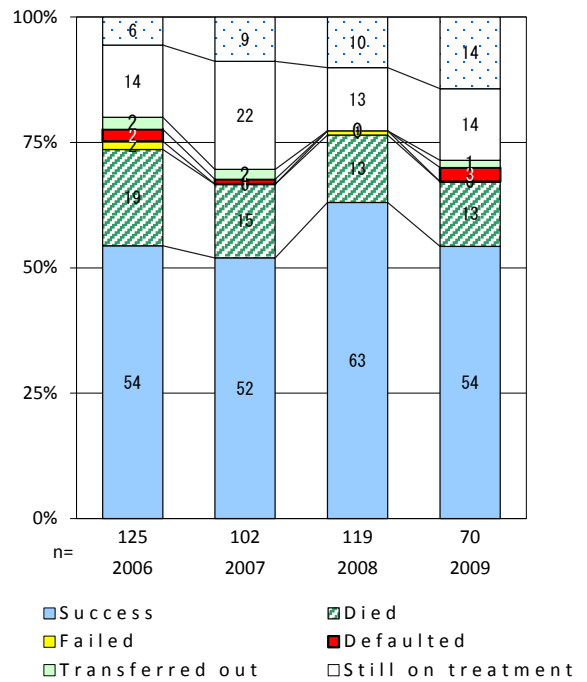


Proportion of DST results obtained among culture pos. pul. TB



◆ Sakai ■ Best prefec./city × Japan

Treatment outcomes of new sputum smear-pos. pul. cases registered in 2006-2009



	'06	'07	'08	'09	'10	Year of registration	'07	'08	'09	Japan
†Excluding unknown delay(%)	0.0	37.0	81.6	55.4	9.9	Median days of treatment (all forms)	275	275	273	(270)
‡Excluding unknown Tx (%)	0.0	0.5	0.0	0.0	0.0	Median days of hospitalization (pul.TB)	63	71	56	(68)