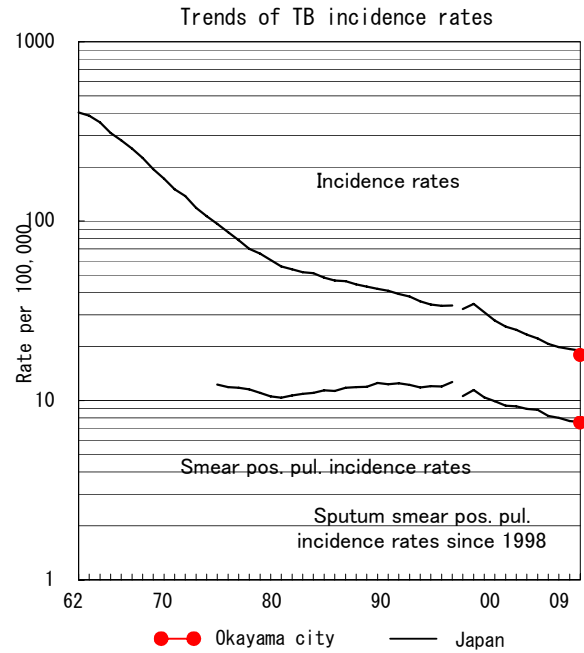
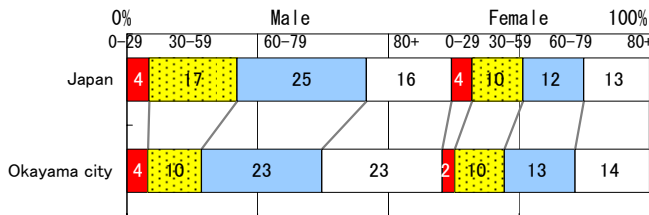


# Okayama city

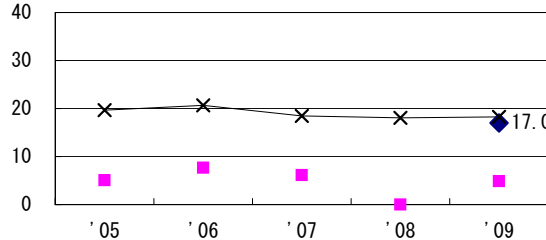
TB statistics in 2009		
Population	704,189	(Japan)
Foreigners	9	7.1% (3.9%)
Estimated homeless or poor TB among male cases aged 30-59 yrs	1	7.7% (12.0%)

Trends	'05	'06	'07	'08	'09
Notified cases	-	-	-	-	126
Rate per 100,000	-	-	-	-	17.9
Sputum smear pos. pul. cases	-	-	-	-	53
Rate per 100,000	-	-	-	-	7.5

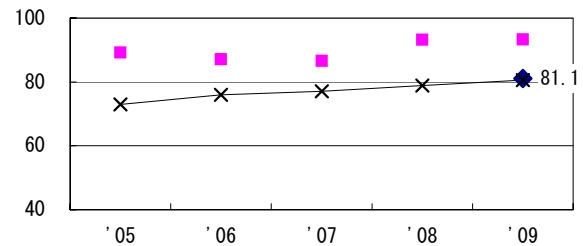
Age-sex composition of notified cases, 2009



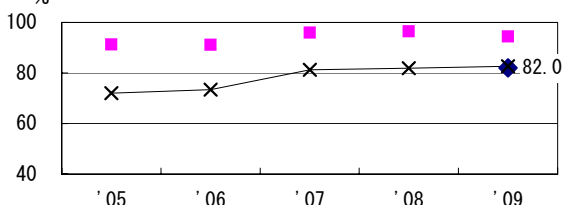
Proportion of cases with long case finding delay (>3M) among symptomatic pul. TB †



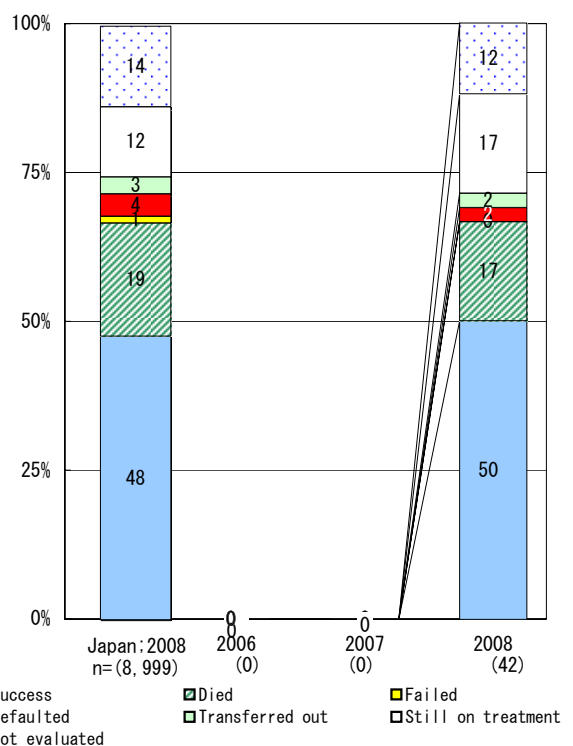
Proportion of Tx with HRZ-E/S among all forms of TB cases aged under 80 yrs ‡



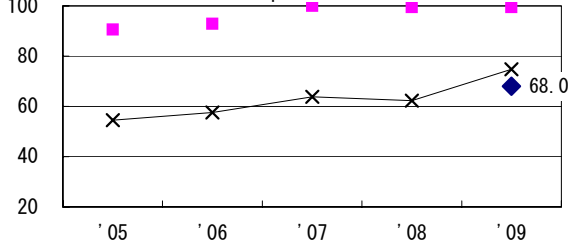
Proportion of bacillary cases among pul. TB



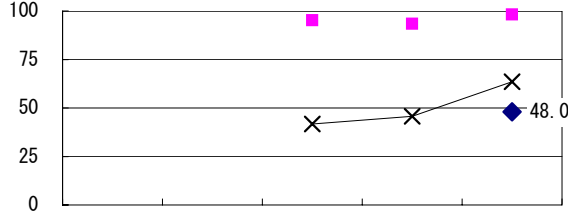
Treatment outcomes of new sputum smear-pos. pul. cases registered in 2006-2008



Proportion of culture results obtained among pul. TB



Proportion of DST results obtained among culture pos. pul. TB



◆ Okayama city    ■ Best prefec./city    × Japan

† Excluding unk delay (%)	'05	'06	'07	'08	'09	Registered year	'07	'08	Japan
‡ Excluding unk Tx (%)	-	-	-	-	24.3	Median days of treatment (all forms)	0	283	(272)
	-	-	-	-	3.8	Median days of hospitalization (pul. TB)	0	65	(67)