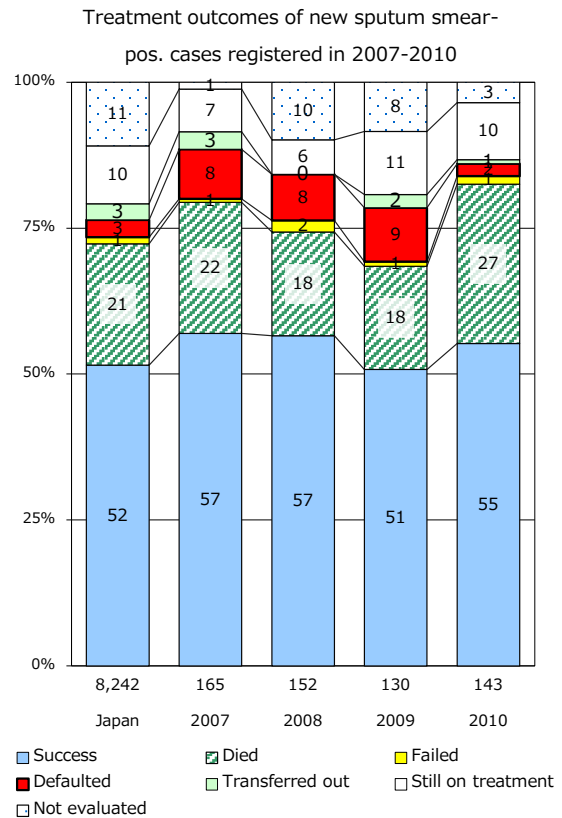
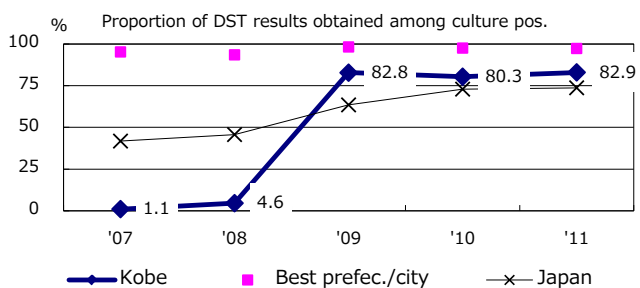
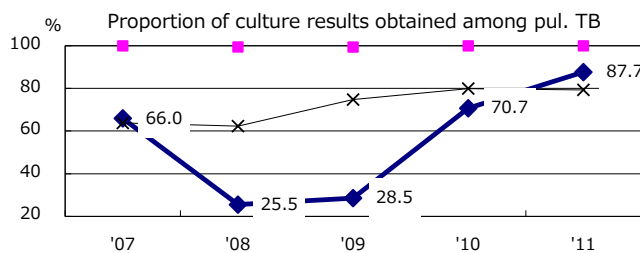
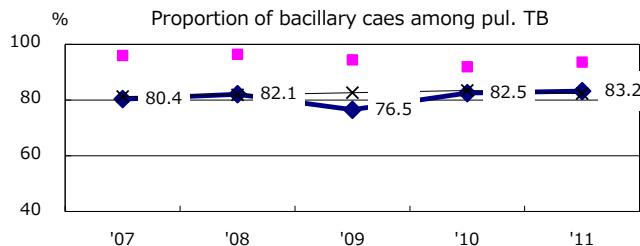
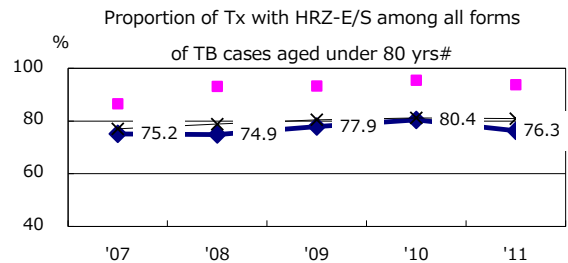
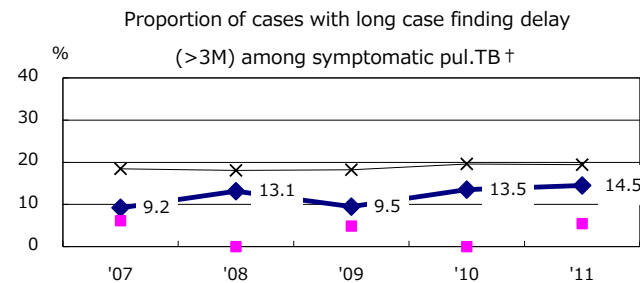
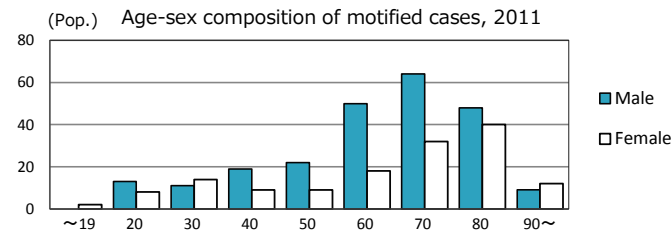
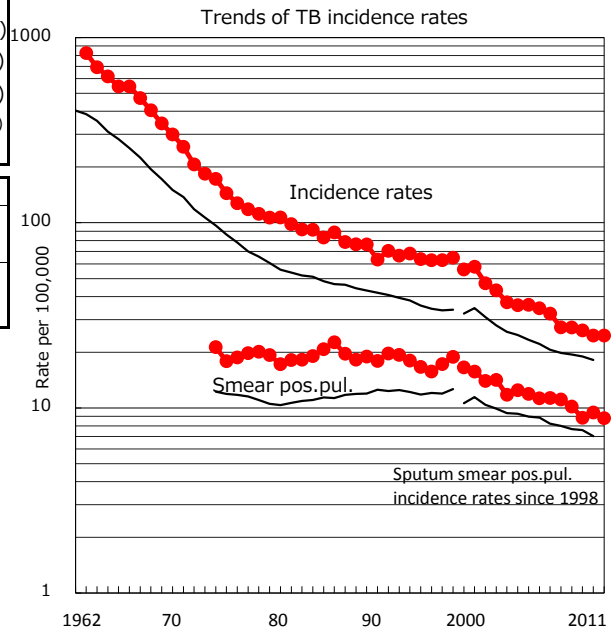


TB statistics in 2011		
Population	1,544,200	(Japan)
Foreign borns	16	4.2% (4.1%)
TB patients with homeless history	4	1.1% (1.4%)
Jobless TB patients getting public assistance, proportion among male TB patients aged 35-59 yrs	3	5.8% (10.6%)

Trends	'07	'08	'09	'10	'11
Notified cases	417	417	403	380	380
Rate per 100,000	27.3	27.2	26.2	24.6	24.6
Sputum smear pos. pul. cases	170	156	136	146	136
Rate per 100,000	11.1	10.2	8.9	9.5	8.8



	'07	'08	'09	'10	'11	Year of registration	'07	'08	'09	'10	Japan
† Excluding unknown delay(%)	14.5	4.9	45.3	69.2	38.5	Median days of treatment (all forms)	245	246	260	272	(272)
# Excluding unknown Tx(%)	0.0	0.9	0.0	0.0	0.4	Median days of hospitalization (pul. TB)	90	87	65	52	(65)