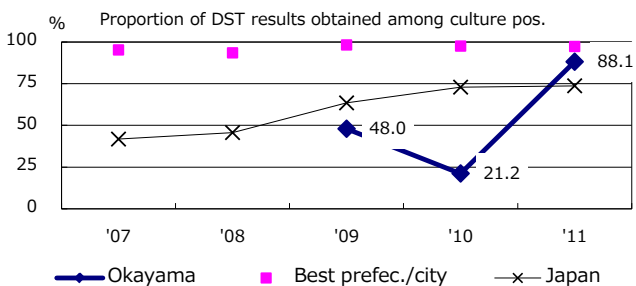
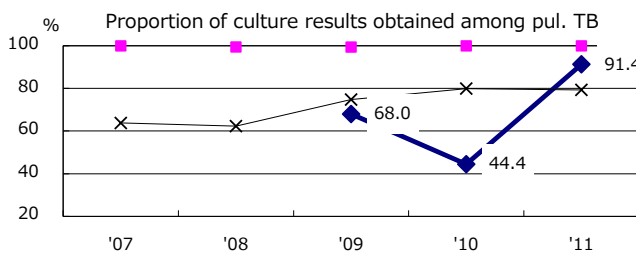
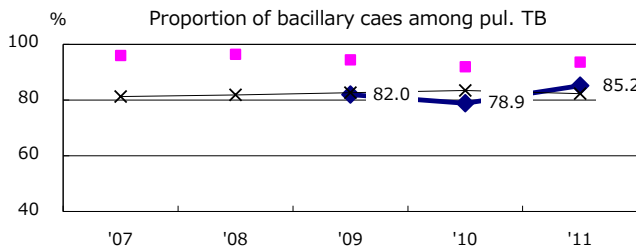
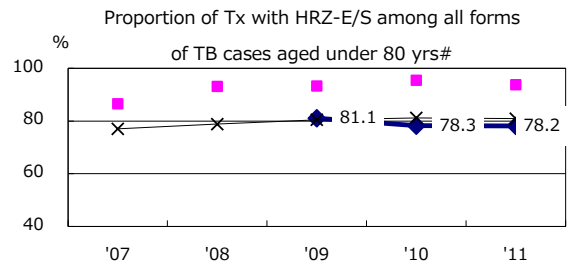
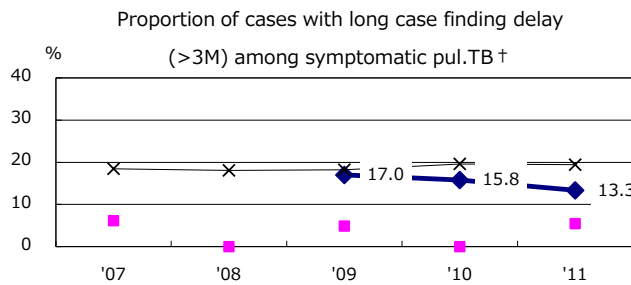
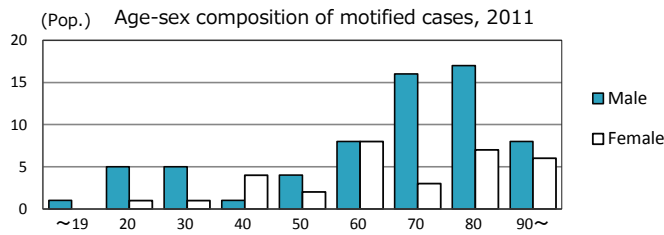
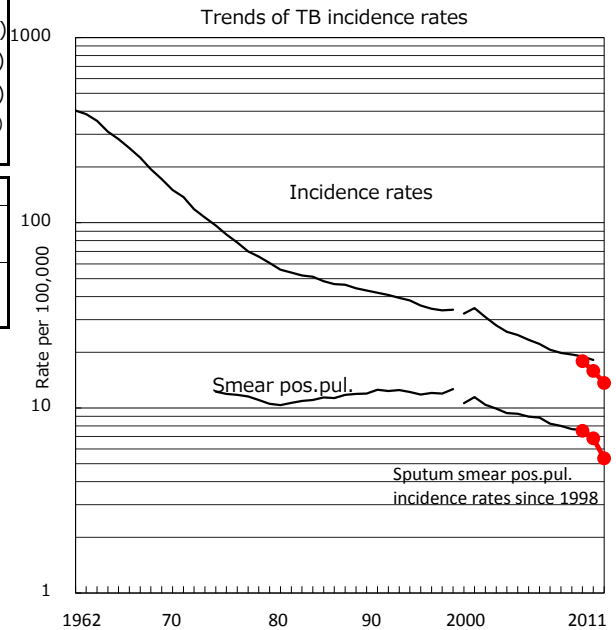
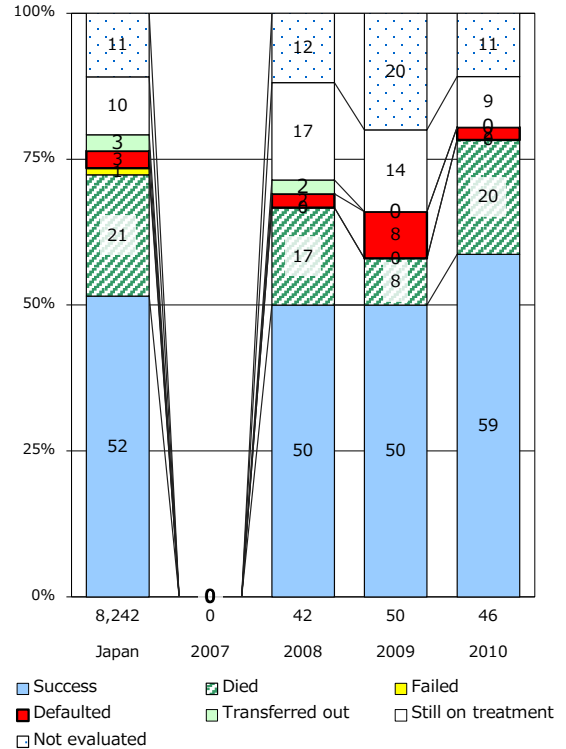


TB statistics in 2011		
Population	710,913	(Japan)
Foreign borns	10	10.3% (4.1%)
TB patients with homeless history	2	2.1% (1.4%)
Jobless TB patients getting public assistance, proportion among male TB patients aged 35-59 yrs	1	10.0% (10.6%)

Trends	'07	'08	'09	'10	'11
Notified cases	-	-	126	111	97
Rate per 100,000	-	-	17.9	15.9	13.6
Sputum smear pos. pul. cases	-	-	53	48	38
Rate per 100,000	-	-	7.5	6.9	5.3



Treatment outcomes of new sputum smear-pos. cases registered in 2007-2010



	'07	'08	'09	'10	'11	Year of registration	'07	'08	'09	'10	Japan
† Excluding unknown delay(%)	-	-	24.3	5.0	75.0	Median days of treatment (all forms)	-	283	268	248	(272)
# Excluding unknown Tx(%)	-	-	6.3	5.5	6.8	Median days of hospitalization (pul. TB)	-	65	50	66	(65)