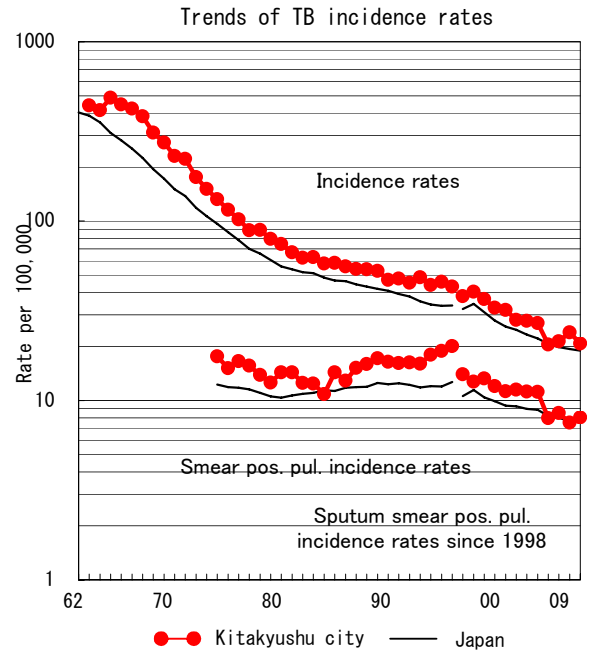
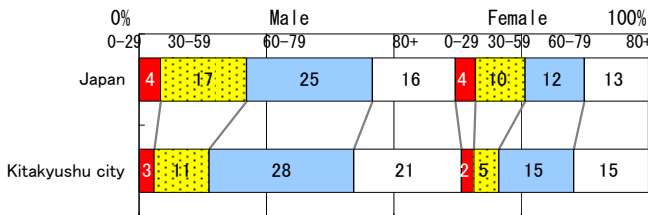


# Kitakyushu city

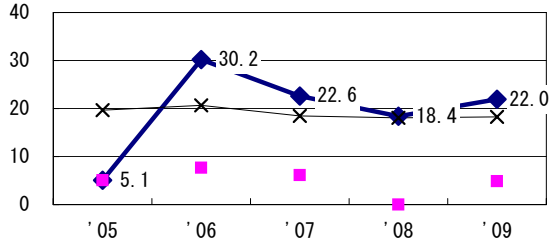
TB statistics in 2009		
Population	982,805	(Japan)
Foreigners	3	1.5% (3.9%)
Estimated homeless or poor TB among male cases aged 30-59 yrs	4	18.2% (12.0%)

Trends	'05	'06	'07	'08	'09
Notified cases	268	203	211	236	204
Rate per 100,000	27.0	20.5	21.4	24.0	20.8
Sputum smear pos. pul. cases	111	79	84	74	79
Rate per 100,000	11.2	8.0	8.5	7.5	8.0

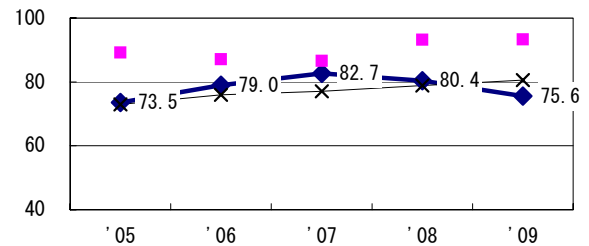
Age-sex composition of notified cases, 2009



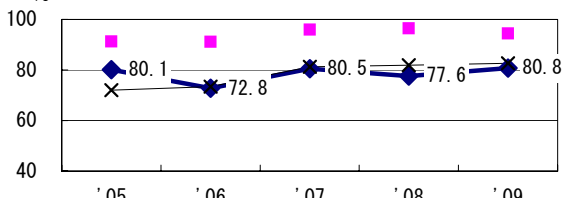
Proportion of cases with long case finding delay (>3M) among symptomatic pul. TB †



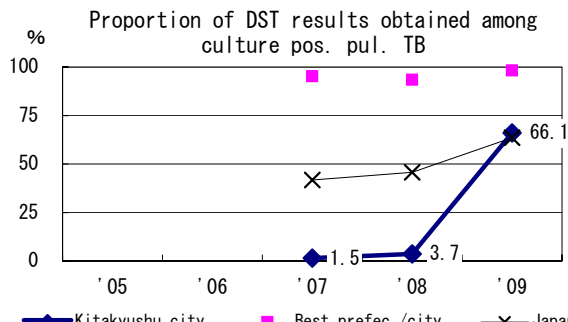
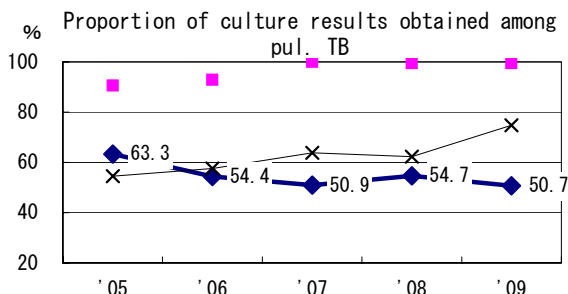
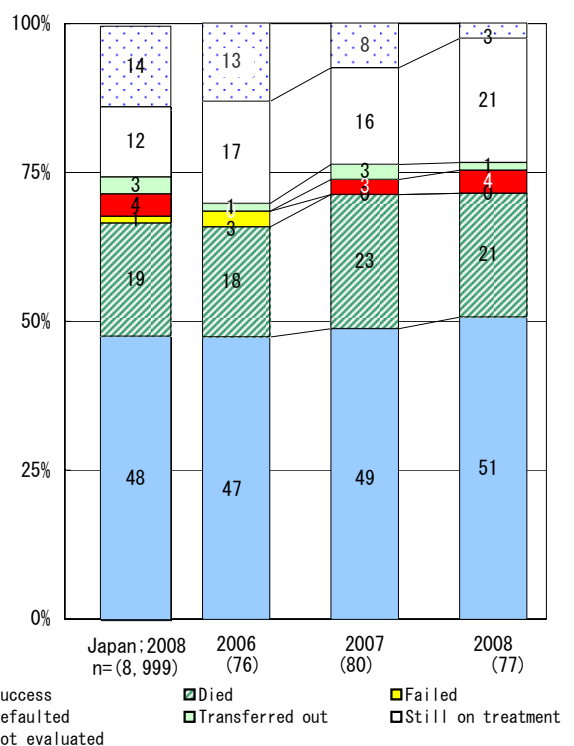
Proportion of Tx with HRZ-E/S among all forms of TB cases aged under 80 yrs ‡



Proportion of bacillary cases among pul. TB



Treatment outcomes of new sputum smear-pos. pul. cases registered in 2006-2008



	'05	'06	'07	'08	'09
† Excluding unk delay (%)	31.7	18.1	33.9	60.5	66.9
‡ Excluding unk Tx (%)	4.1	12.1	18.9	3.6	0.0

Registered year	'07	'08	Japan
Median days of treatment (all forms)	295	270	(272)
Median days of hospitalization (pul. TB)	60	67	(67)