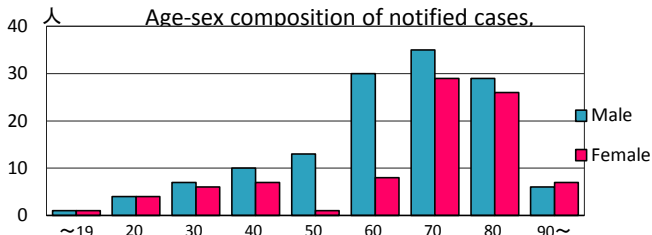
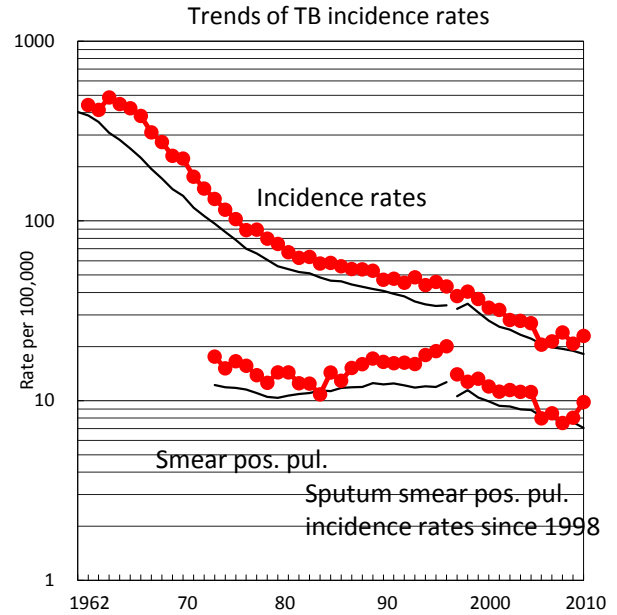
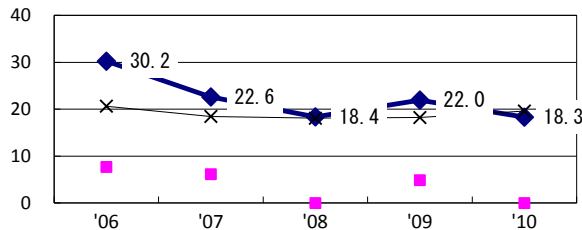


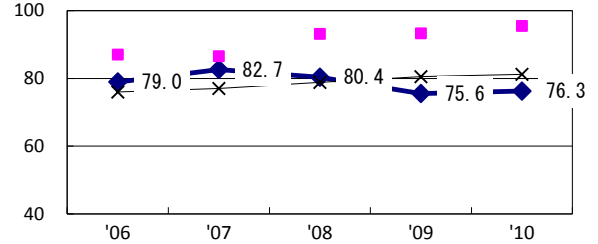
TB statistics in 2010					
Population	977,288			(Japan)	
Foreign borns	6	2.7%		(4.1%)	
TB patients with homeless history	5	2.2%		(1.4%)	
Jobless TB patients getting public assistance, proportion among male TB patients aged 35-59 yrs	1	3.3%		(10.8%)	
Trends	'06	'07	'08	'09	'10
Notified cases	203	211	236	204	224
Rate per 100,000	20.5	21.4	24.0	20.8	22.9
Sputum smear pos. pul. cases	79	84	74	79	96
Rate per 100,000	8.0	8.5	7.5	8.0	9.8



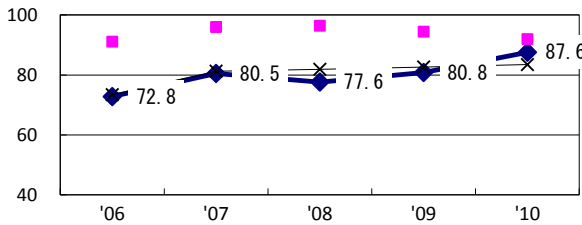
Proportion of cases with long case finding delay (>3M) among symptomatic pul. TB †



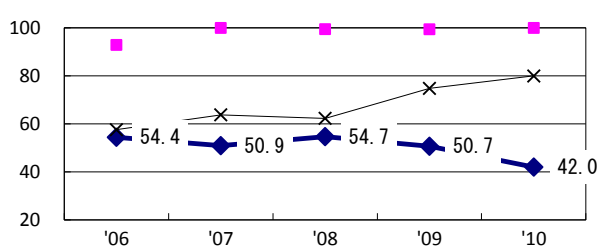
Proportion of Tx with HRZ-E/S among all forms of TB cases aged under 80 yrs*



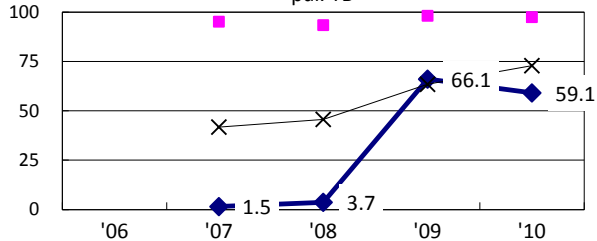
Proportion of bacillary cases among pul. TB



Proportion of culture results obtained among pul. TB

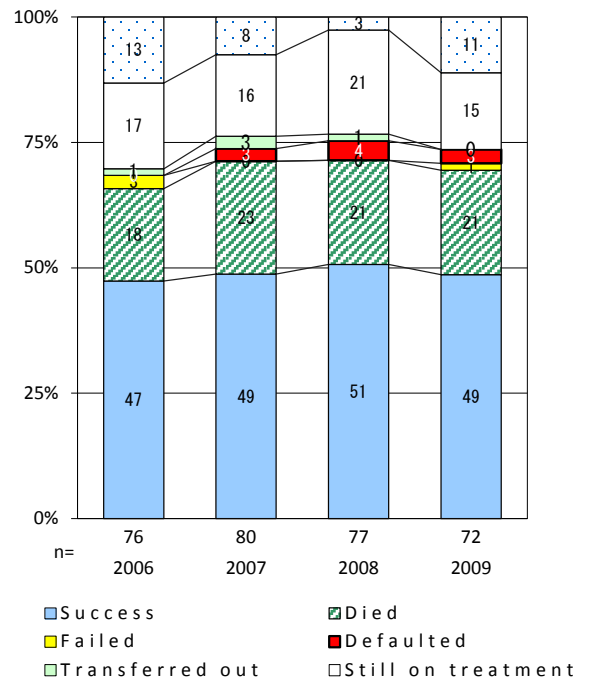


Proportion of DST results obtained among culture pos. pul. TB



◆ Kitakyushu ■ Best prefec./city × Japan

Treatment outcomes of new sputum smear-pos. pul. cases registered in 2006-2009



†Excluding unknown delay(%)	'06: 18.1	'07: 33.9	'08: 60.5	'09: 66.9	'10: 45.0	Year of registration	'07: 295	'08: 270	'09: 279	Japan (270)
‡Excluding unknown Tx (%)	'06: 12.1	'07: 20.1	'08: 5.4	'09: 0.0	'10: 0.0	Median days of treatment (all forms)	'08: 60	'09: 67	'10: 56	Japan (68)
						Median days of hospitalization (pul.TB)				