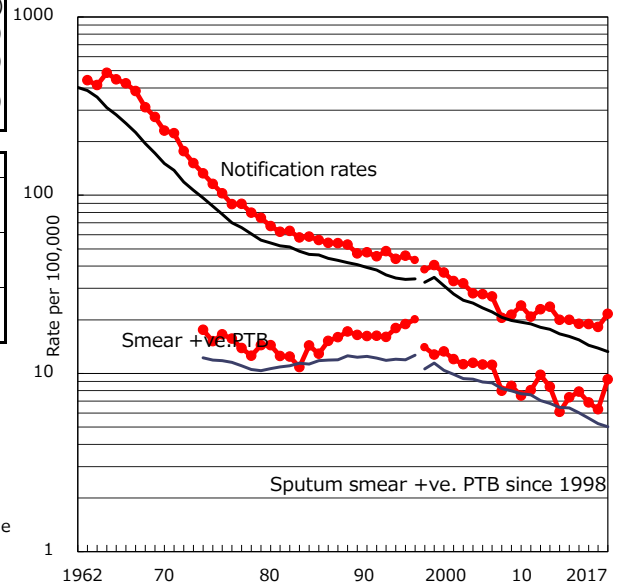


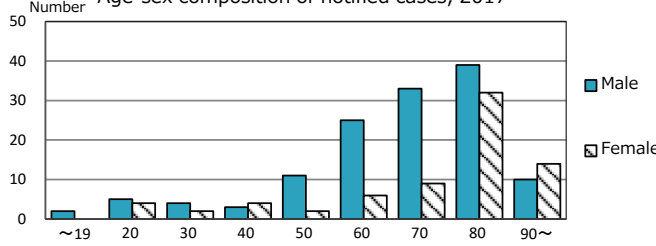
TB statistics in 2017 ( Population in Kitakyushu C. 950,646 )	
Among newly notified : (Japan)	
Foreign borns	6 2.9% (9.1%)
TB cases with homeless history	0 0.0% (0.9%)
Male aged 35-59, without job and receiving public assistance	2 11.1% (7.3%)

Trends	'13	'14	'15	'16	2017
Notified cases	193	183	182	173	205
Rate per 100,000 population	19.9	19.0	18.9	18.2	21.6
Sputum smear +ve. PTB	71	76	66	60	88
Rate per 100,000 population	7.3	7.9	6.9	6.3	9.3
Latent Tuberculosis Infection	70	46	61	86	83
Rate per 100,000 population	7.2	4.8	6.3	9.0	8.7

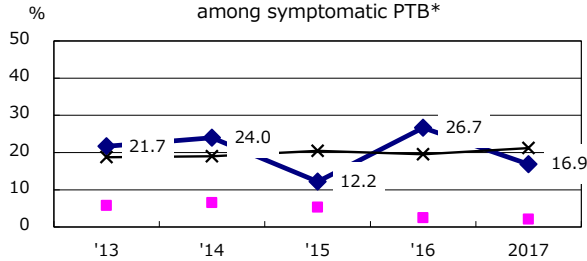
Trends of TB notification rates, all forms and smear +ve.PTB



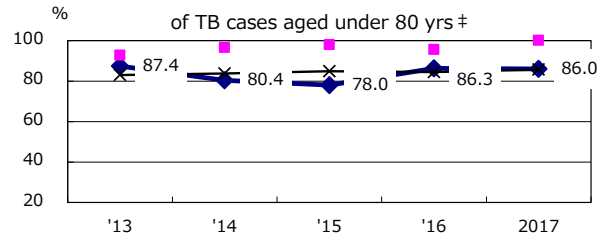
Age-sex composition of notified cases, 2017



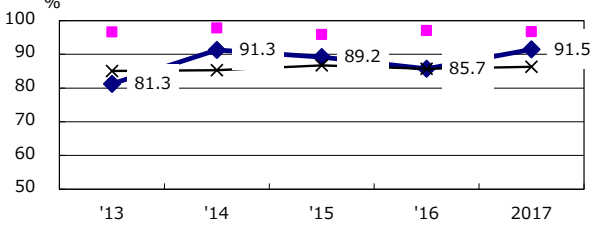
Proportion of cases with total diagnosis delay (> 3 mths) among symptomatic PTB\*



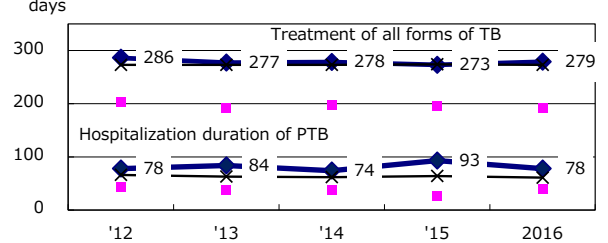
Proportion of TX with HRZ-E/S among all forms of TB cases aged under 80 yrs †



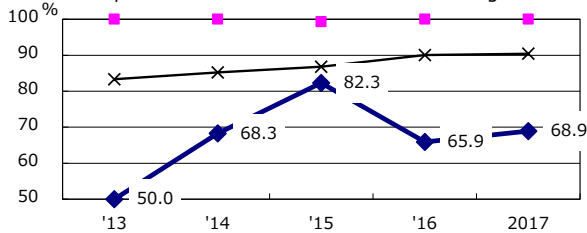
Proportion of Bacteriologically +ve. PTB



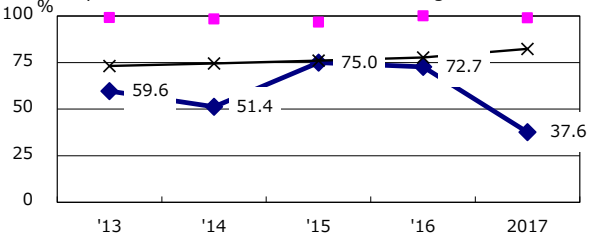
Median duration of treatment of all forms and hospitalization among PTB



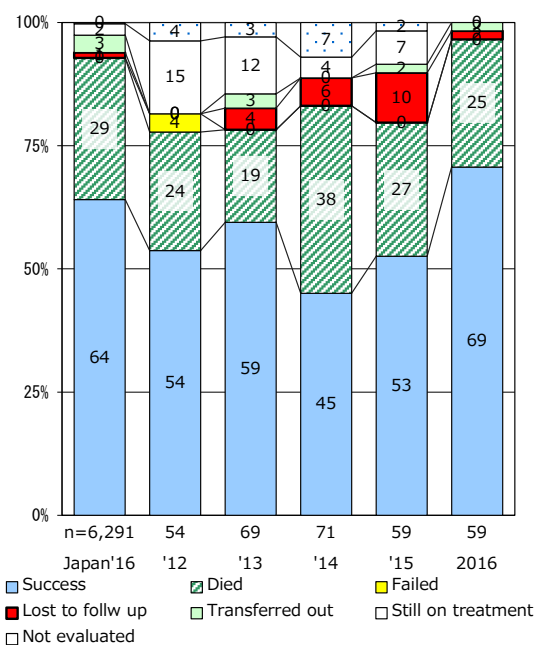
Proportion of culture results obtained among PTB



Proportion of DST results obtained among culture +ve. PTB



Treatment outcomes of new sputum smear +ve.TB



PTB : pulmonary TB

† Excluding unknown delay(%)	'13	'14	'15	'16	2017
	45.0	49.0	58.6	51.1	29.4

‡ Excluding unknown Tx(%)	'13	'14	'15	'16	2017
	5.1	2.0	2.0	3.1	2.7