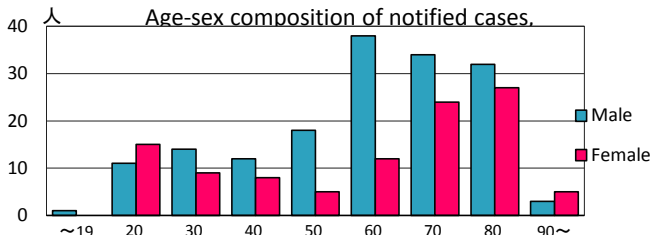
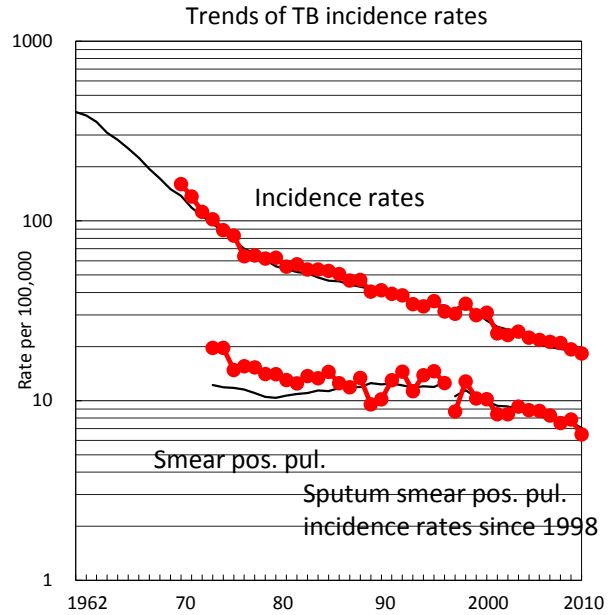
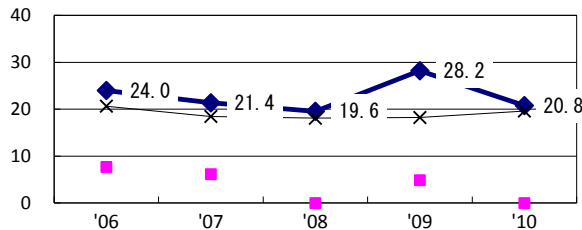


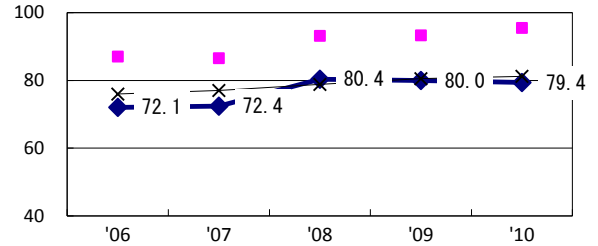
TB statistics in 2010					
Population	1,463,826			(Japan)	
Foreign borns	24	9.0%		(4.1%)	
TB patients with homeless history	9	3.4%		(1.4%)	
Jobless TB patients getting public assistance, proportion among male TB patients aged 35-59 yrs	11	25.0%		(10.8%)	
Trends	'06	'07	'08	'09	'10
Notified cases	308	303	301	280	268
Rate per 100,000	21.8	21.2	20.9	19.3	18.3
Sputum smear pos. pul. cases	124	118	108	114	95
Rate per 100,000	8.8	8.3	7.5	7.9	6.5



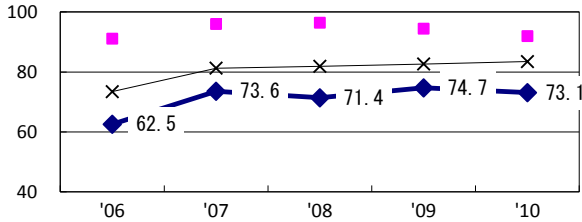
Proportion of cases with long case finding delay (>3M) among symptomatic pul. TB †



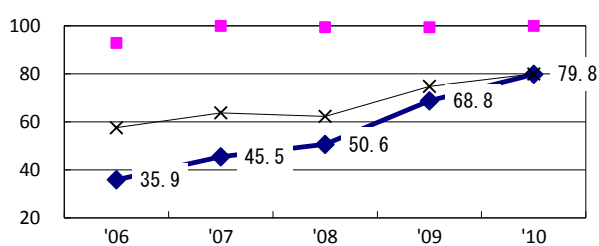
Proportion of Tx with HRZ-E/S among all forms of TB cases aged under 80 yrs‡



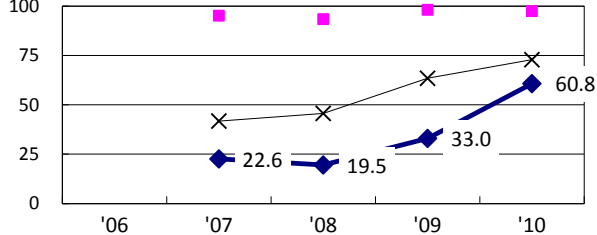
Proportion of bacillary cases among pul. TB



Proportion of culture results obtained among pul. TB

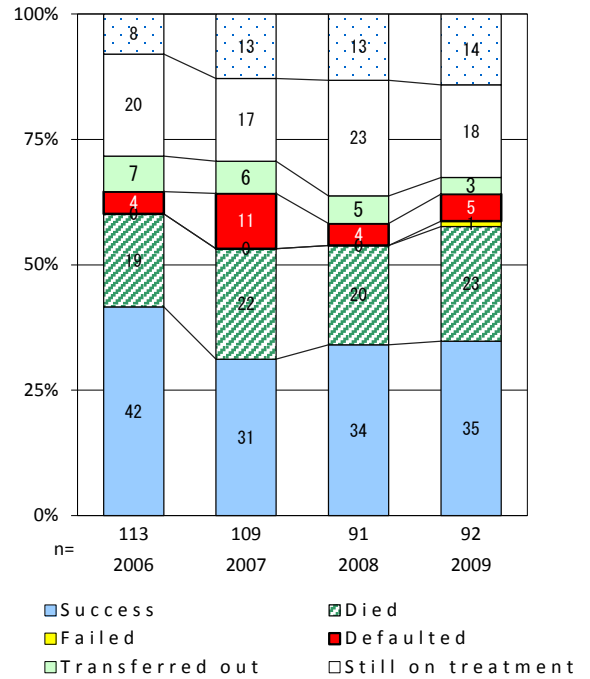


Proportion of DST results obtained among culture pos. pul. TB



◆ Fukuoka    ■ Best prefec./city    × Japan

Treatment outcomes of new sputum smear-pos. pul. cases registered in 2006-2009



	'06	'07	'08	'09	'10	Year of registration	'07	'08	'09	Japan
†Excluding unknown delay(%)	6.0	32.8	47.7	54.4	51.0	Median days of treatment (all forms)	275	269	282	(270)
‡Excluding unknown Tx (%)	0.4	1.3	3.5	0.5	1.0	Median days of hospitalization (pul.TB)	51	49	62	(68)