

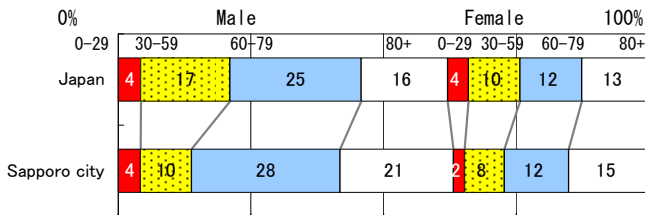
M1

Sapporo city

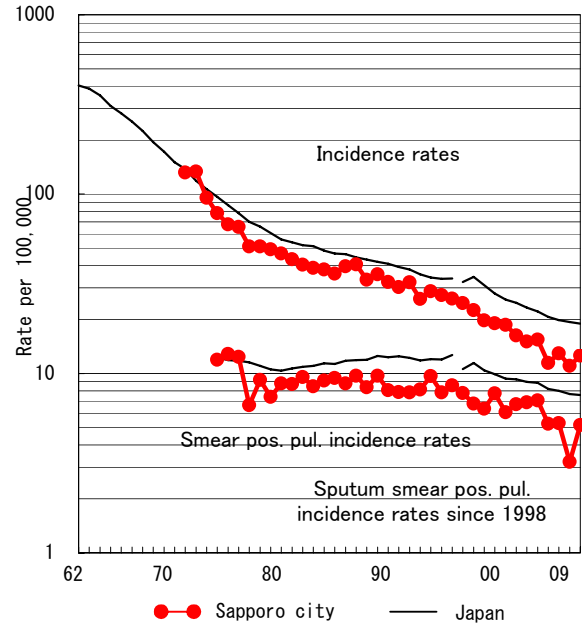
TB statistics in 2009		
Population	1,904,278	(Japan)
Foreigners	6	2.5% (3.9%)
Estimated homeless or poor TB among male cases aged 30-59 yrs	2	8.7% (12.0%)

Trends	'05	'06	'07	'08	'09
Notified cases	290	216	245	209	239
Rate per 100,000	15.4	11.4	12.9	11.0	12.6
Sputum smear pos. pul. cases	133	99	100	61	98
Rate per 100,000	7.1	5.2	5.3	3.2	5.1

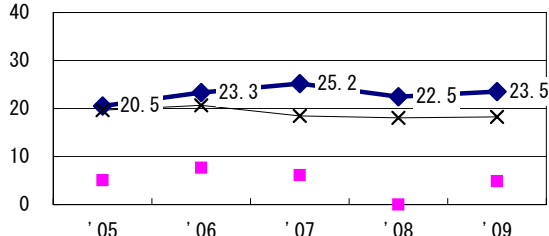
Age-sex composition of notified cases, 2009



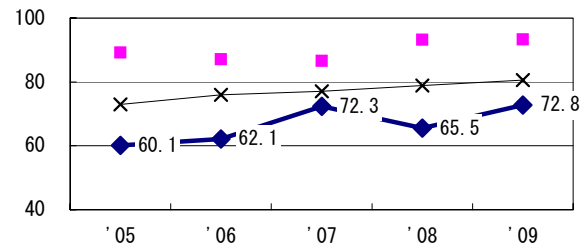
Trends of TB incidence rates



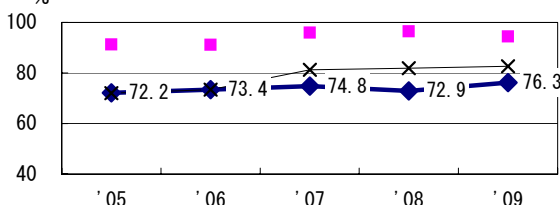
Proportion of cases with long case finding delay (>3M) among symptomatic pul. TB †



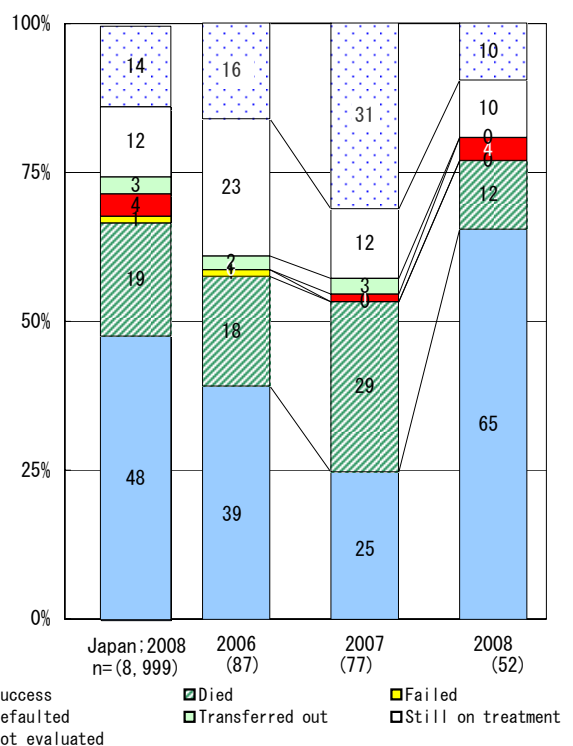
Proportion of Tx with HRZ-E/S among all forms of TB cases aged under 80 yrs ‡



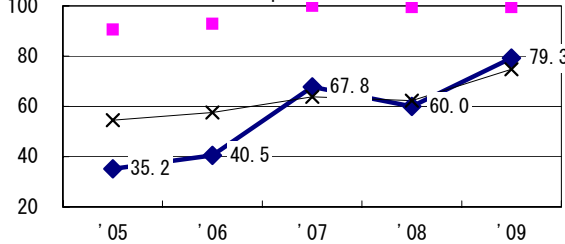
Proportion of bacillary cases among pul. TB



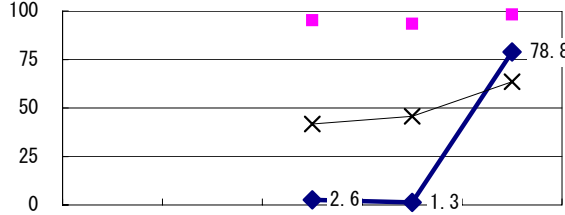
Treatment outcomes of new sputum smear-pos. pul. cases registered in 2006-2008



Proportion of culture results obtained among pul. TB



Proportion of DST results obtained among culture pos. pul. TB



◆ Sapporo city ■ Best prefec./city × Japan

	'05	'06	'07	'08	'09
† Excluding unk delay (%)	0.0	1.6	3.4	0.0	0.0
‡ Excluding unk Tx (%)	1.0	3.2	0.6	0.0	0.7

Registered year	'07	'08	Japan
Median days of treatment (all forms)	328	277	(272)
Median days of hospitalization (pul. TB)	76	78	(67)