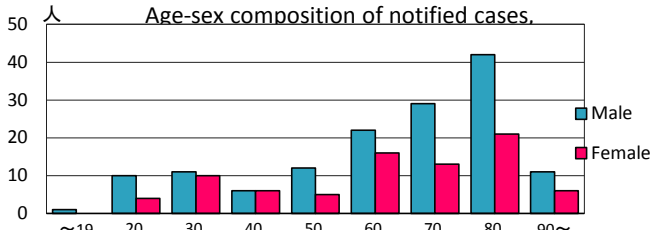
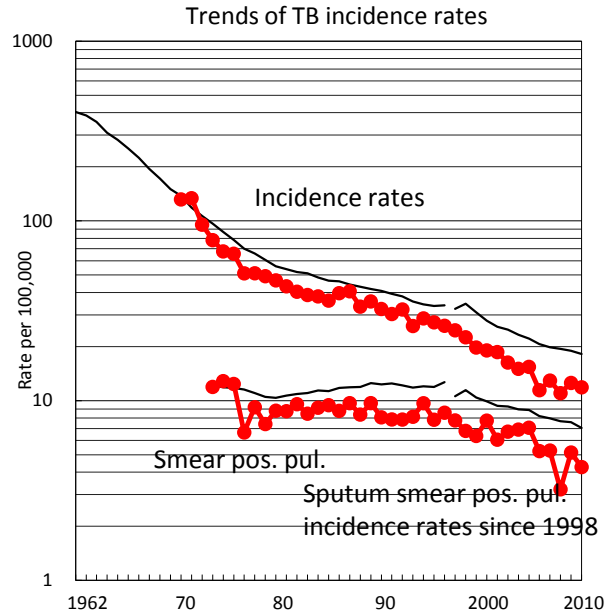
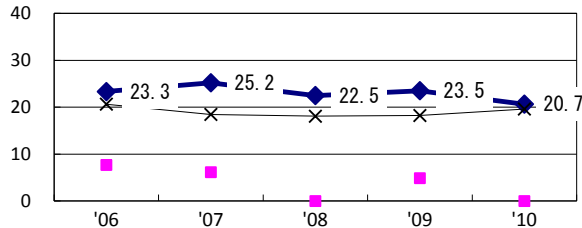


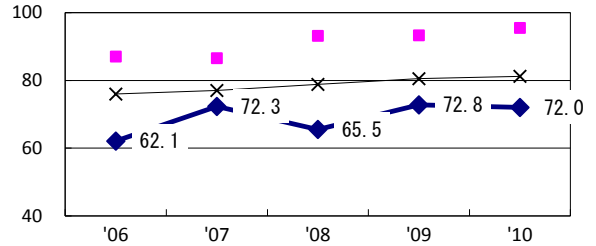
TB statistics in 2010					
Population	1,896,225			(Japan)	
Foreign borns	9	4.0%		(4.1%)	
TB patients with homeless history	0	0.0%		(1.4%)	
Jobless TB patients getting public assistance, proportion among male TB patients aged 35-59 yrs	4	13.8%		(10.8%)	
Trends	'06	'07	'08	'09	'10
Notified cases	216	245	209	239	225
Rate per 100,000	11.4	12.9	11.0	12.6	11.9
Sputum smear pos. pul. cases	99	100	61	98	81
Rate per 100,000	5.2	5.3	3.2	5.1	4.3



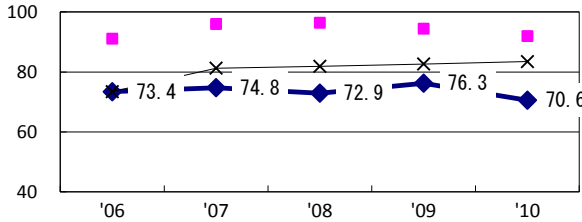
Proportion of cases with long case finding delay (>3M) among symptomatic pul. TB †



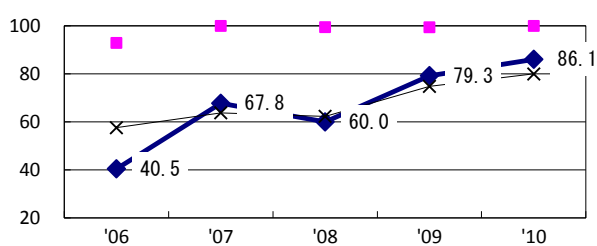
Proportion of Tx with HRZ-E/S among all forms of TB cases aged under 80 yrs‡



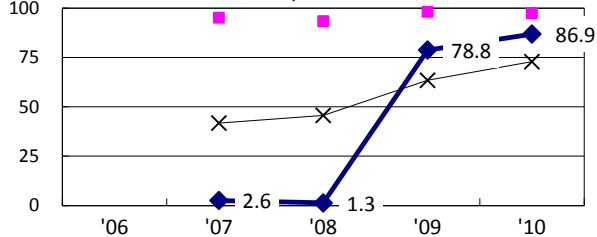
Proportion of bacillary cases among pul. TB



Proportion of culture results obtained among pul. TB

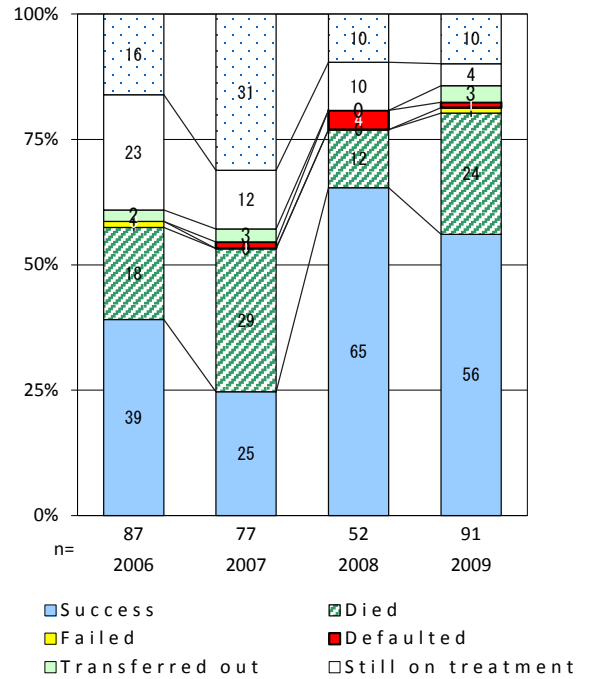


Proportion of DST results obtained among culture pos. pul. TB



◆ Sapporo ■ Best prefec./city × Japan

Treatment outcomes of new sputum smear-pos. pul. cases registered in 2006-2009



	'06	'07	'08	'09	'10	Year of registration	'07	'08	'09	Japan
†Excluding unknown delay(%)	1.6	3.4	0.0	0.0	0.0	Median days of treatment (all forms)	328	277	269	(270)
‡Excluding unknown Tx (%)	3.2	0.6	2.6	3.3	1.4	Median days of hospitalization (pul.TB)	76	78	86	(68)