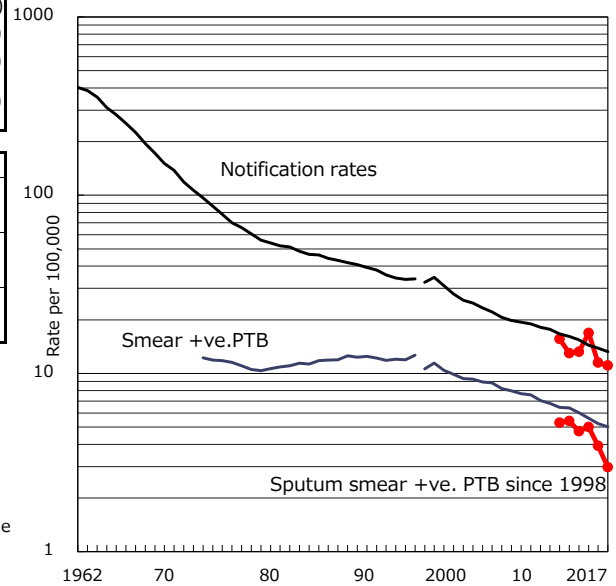


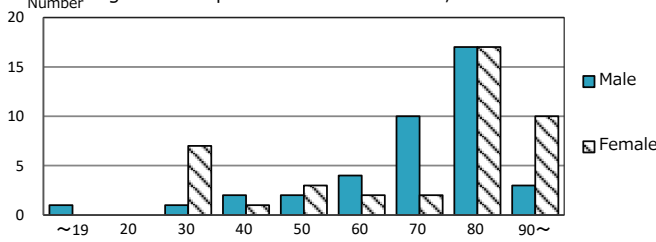
TB statistics in 2017 (Population in Kumamoto C. 739,858)	
Among newly notified : (Japan)	
Foreign borns	1 1.2% (9.1%)
TB cases with homeless history	0 0.0% (0.9%)
Male aged 35-59, without job and receiving public assistance	0 0.0% (7.3%)

Trends	'13	'14	'15	'16	2017
Notified cases	96	98	125	85	82
Rate per 100,000 population	13.0	13.2	16.9	11.5	11.1
Sputum smear +ve. PTB	40	35	37	29	22
Rate per 100,000 population	5.4	4.7	5.0	3.9	3.0
Latent Tuberculosis Infection	35	37	40	29	25
Rate per 100,000 population	4.7	5.0	5.4	3.9	3.4

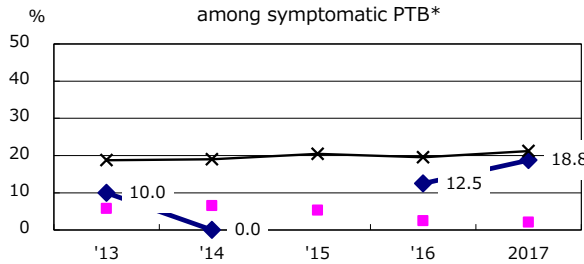
Trends of TB notification rates, all forms and smear +ve.PTB



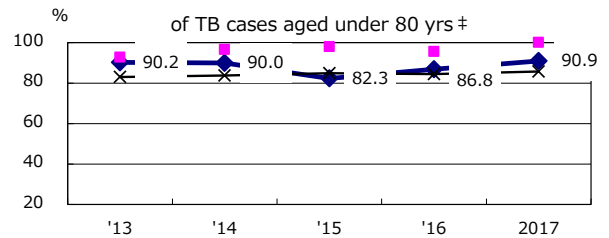
Age-sex composition of notified cases, 2017



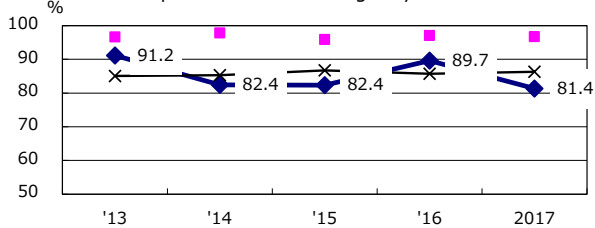
Proportion of cases with total diagnosis delay (> 3 mths) among symptomatic PTB*



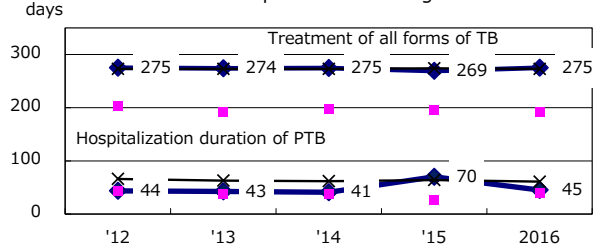
Proportion of TX with HRZ-E/S among all forms of TB cases aged under 80 yrs †



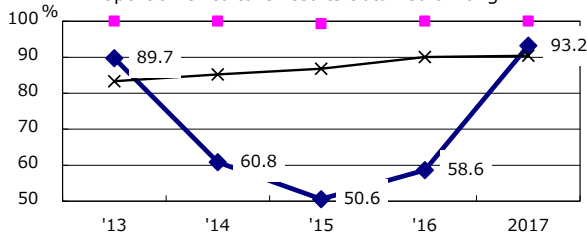
Proportion of Bacteriologically +ve. PTB



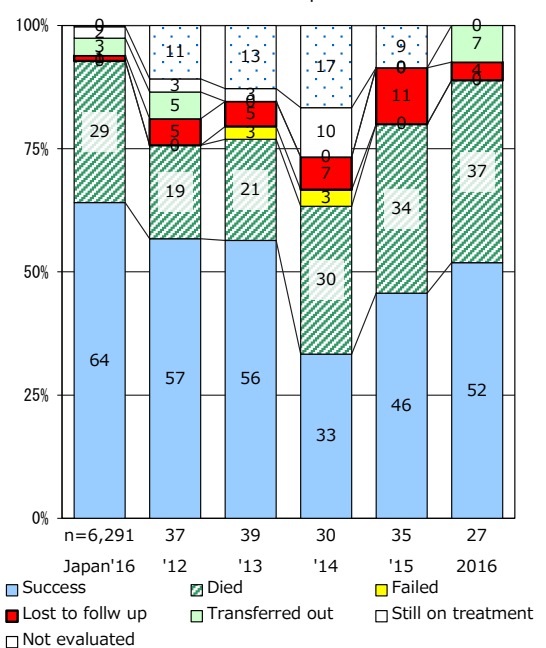
Median duration of treatment of all forms and hospitalization among PTB



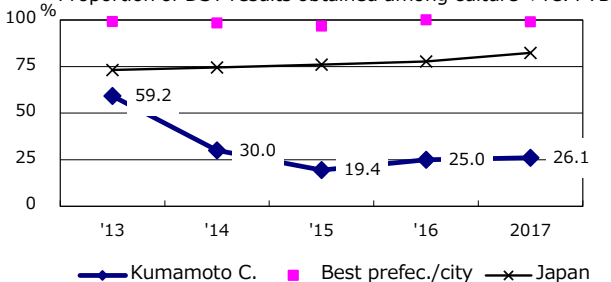
Proportion of culture results obtained among PTB



Treatment outcomes of new sputum smear +ve.TB



Proportion of DST results obtained among culture +ve. PTB



PTB : pulmonary TB

† Excluding unknown delay(%)	'13	'14	'15	'16	2017
	83.1	92.3	100.0	33.3	61.0

‡ Excluding unknown Tx(%)	'13	'14	'15	'16	2017
	4.7	5.7	4.6	2.6	5.7