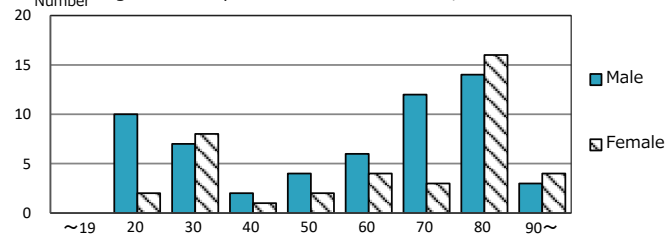


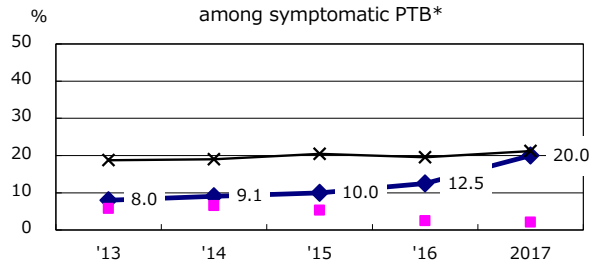
TB statistics in 2017 (Population in Sendai C. 1,086,377)	
Among newly notified : (Japan)	
Foreign borns	22 22.4% (9.1%)
TB cases with homeless history	0 0.0% (0.9%)
Male aged 35-59, without job and receiving public assistance	0 0.0% (7.3%)

Trends	'13	'14	'15	'16	2017
Notified cases	101	102	93	87	98
Rate per 100,000 population	9.5	9.5	8.6	8.0	9.0
Sputum smear +ve. PTB	44	42	34	37	31
Rate per 100,000 population	4.1	3.9	3.1	3.4	2.9
Latent Tuberculosis Infection	46	40	65	126	98
Rate per 100,000 population	9.5	3.7	6.0	11.6	9.0

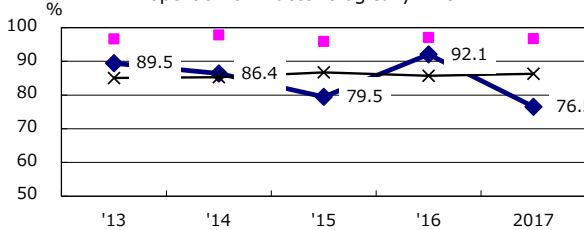
Age-sex composition of notified cases, 2017



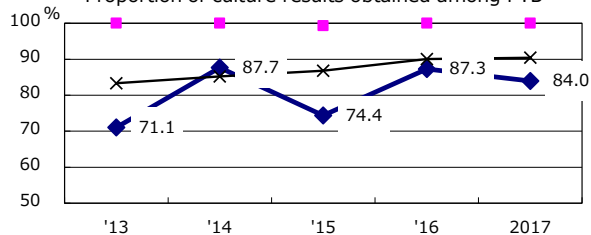
Proportion of cases with total diagnosis delay(> 3 mths) among symptomatic PTB*



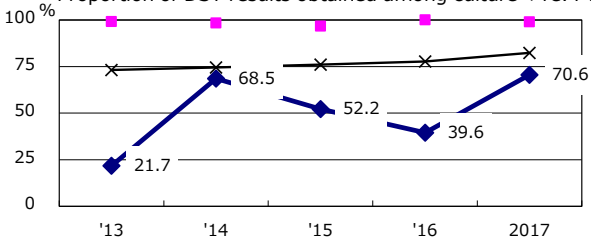
Proportion of Bacteriologically +ve. PTB



Proportion of culture results obtained among PTB



Proportion of DST results obtained among culture +ve. PTB

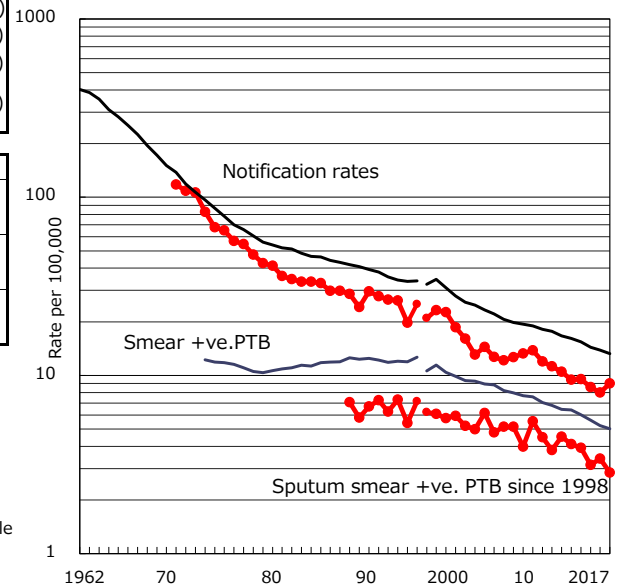


◆ Sendai C. ■ Best prefec./city × Japan

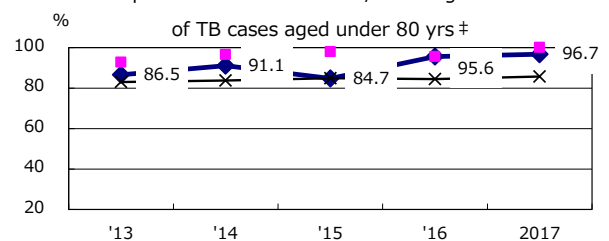
PTB : pulmonary TB

† Excluding unknown delay(%)	'13	'14	'15	'16	2017
	53.7	43.1	50.0	68.0	50.0

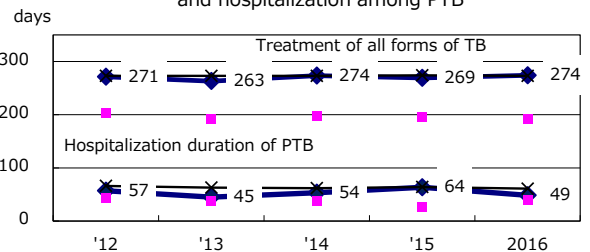
Trends of TB notification rates, all forms and smear +ve.PTB



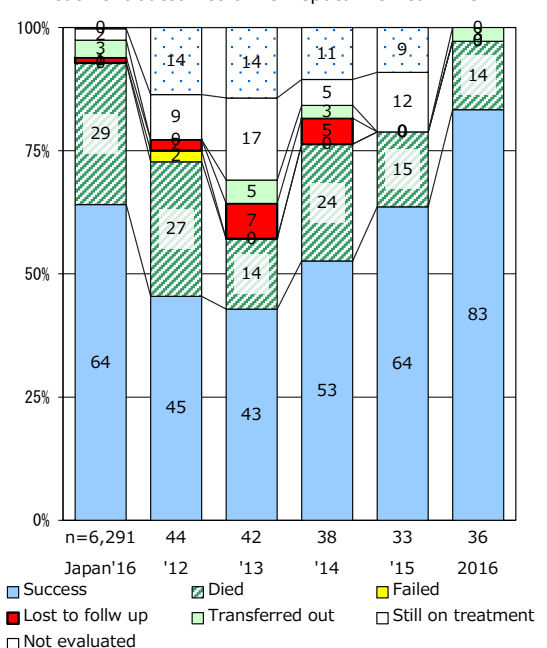
Proportion of TX with HRZ-E/S among all forms



Median duration of treatment of all forms and hospitalization among PTB



Treatment outcomes of new sputum smear +ve.TB



‡ Excluding unknown Tx(%)	'13	'14	'15	'16	2017
	5.5	1.8	0.0	2.2	0.0