

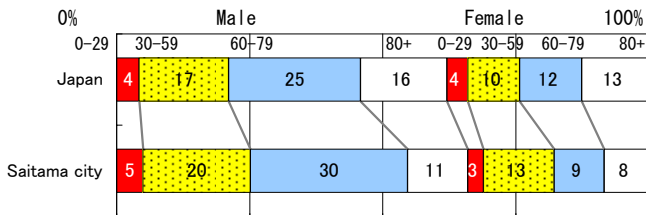
M3

# Saitama city

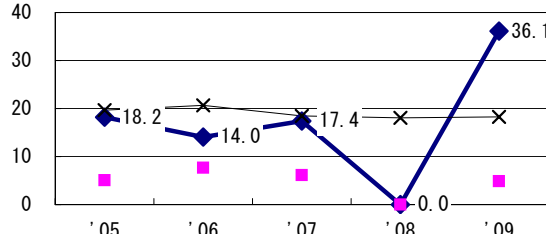
TB statistics in 2009		
Population	1,221,949	(Japan)
Foreigners	7	3.4% (3.9%)
Estimated homeless or poor TB among male cases aged 30-59 yrs	5	12.2% (12.0%)

Trends	'05	'06	'07	'08	'09
Notified cases	250	218	237	227	203
Rate per 100,000	21.3	18.4	19.8	18.8	16.6
Sputum smear pos. pul. cases	114	92	90	102	67
Rate per 100,000	9.7	7.8	7.5	8.4	5.5

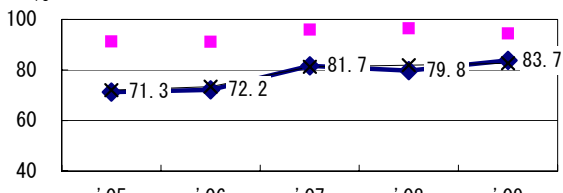
Age-sex composition of notified cases, 2009



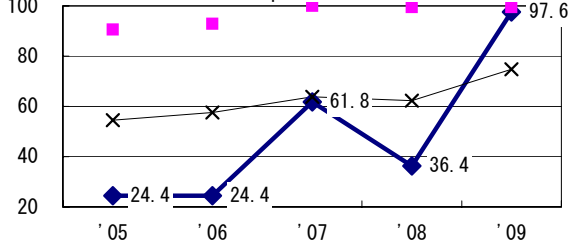
Proportion of cases with long case finding delay (>3M) among symptomatic pul. TB †



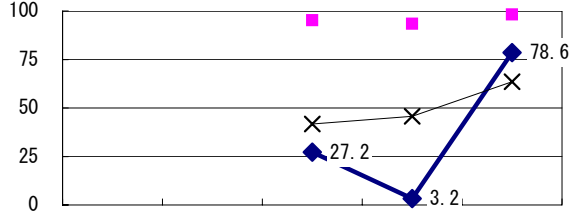
Proportion of bacillary cases among pul. TB



Proportion of culture results obtained among pul. TB

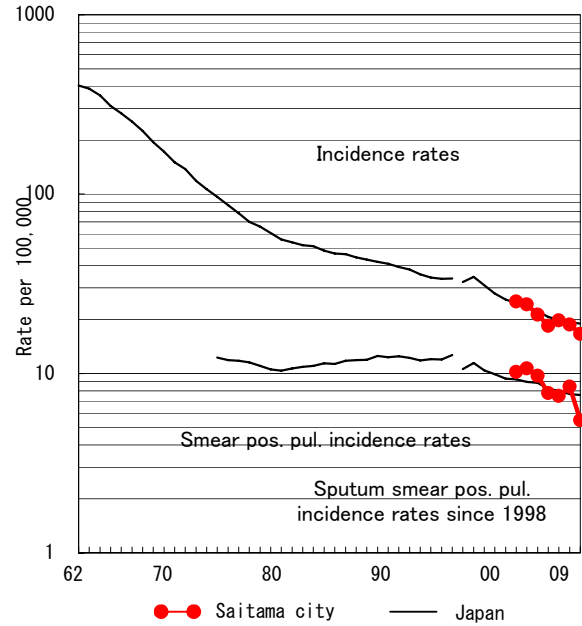


Proportion of DST results obtained among culture pos. pul. TB

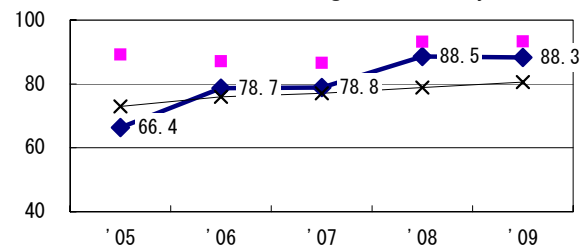


◆ Saitama city    ■ Best prefec./city    × Japan

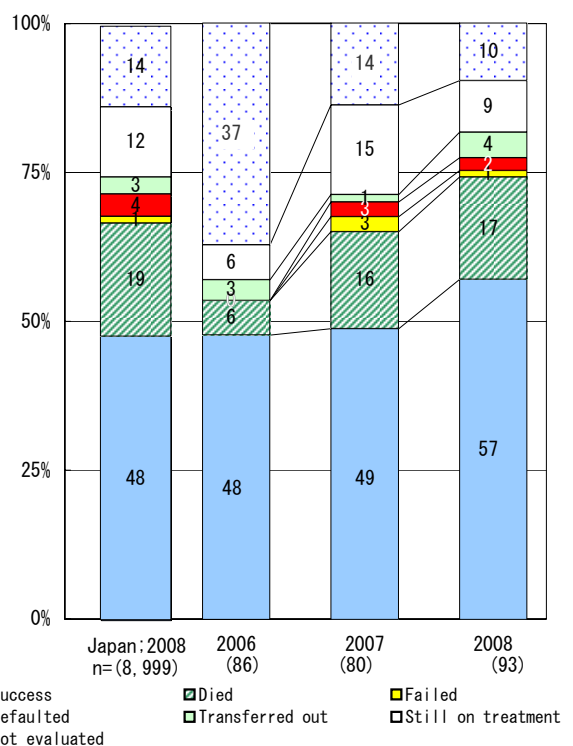
Trends of TB incidence rates



Proportion of Tx with HRZ-E/S among all forms of TB cases aged under 80 yrs ‡



Treatment outcomes of new sputum smear-pos. pul. cases registered in 2006-2008



	'05	'06	'07	'08	'09
† Excluding unk delay (%)	32.7	43.0	60.3	94.0	1.7
‡ Excluding unk Tx (%)	40.2	50.8	6.0	2.0	0.0

Registered year	'07	'08	Japan
Median days of treatment (all forms)	270	264	(272)
Median days of hospitalization (pul. TB)	57	78	(67)