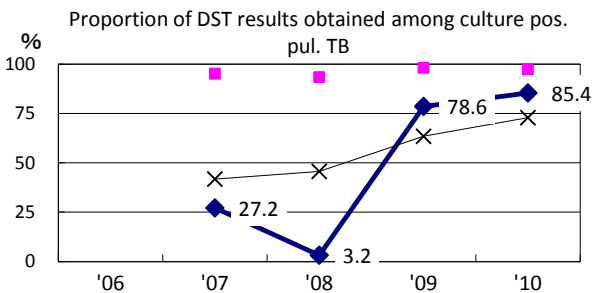
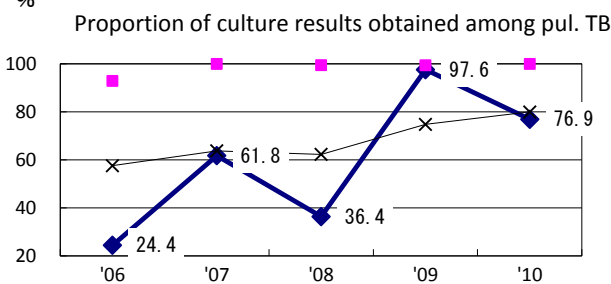
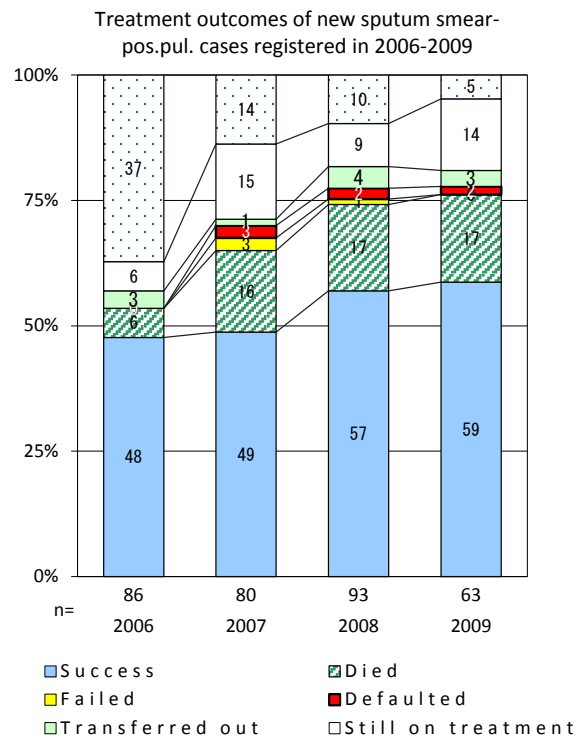
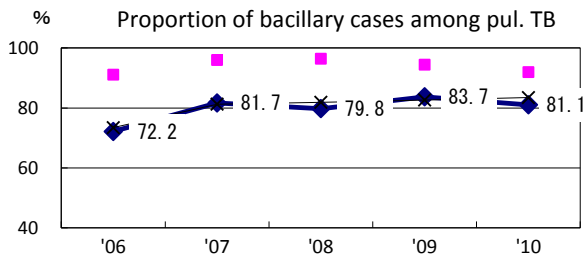
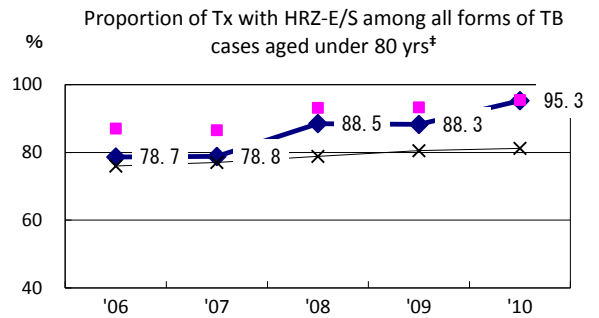
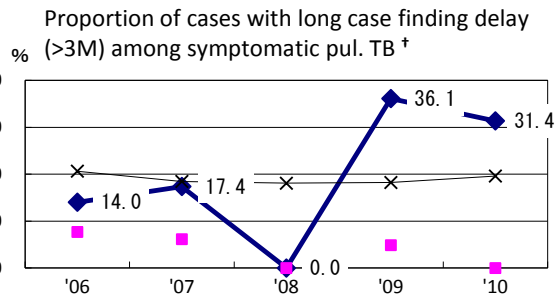
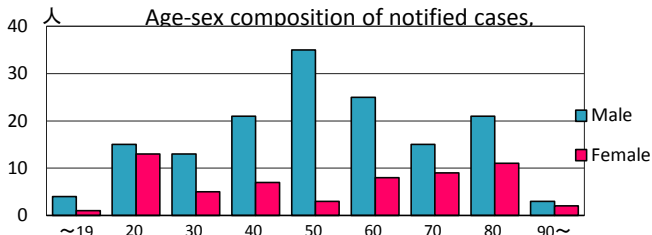
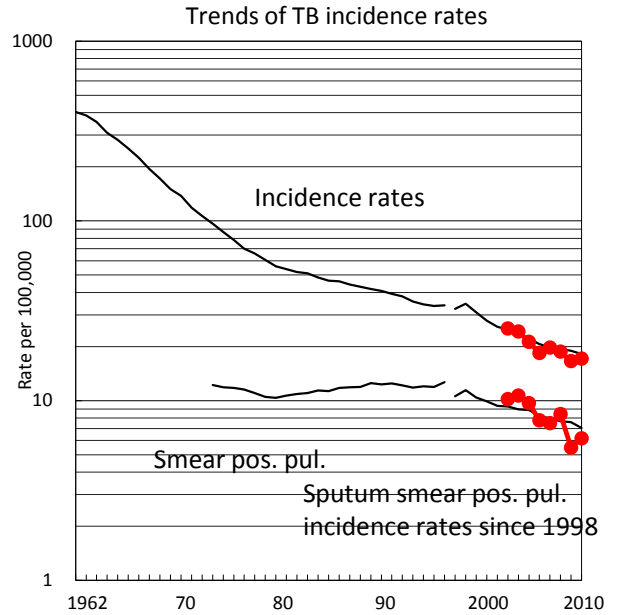


TB statistics in 2010					
Population	1,230,928			(Japan)	
Foreign borns	10	4.7%		(4.1%)	
TB patients with homeless history	7	3.3%		(1.4%)	
Jobless TB patients getting public assistance, proportion among male TB patients aged 35-59 yrs	15	21.7%		(10.8%)	
Trends	'06	'07	'08	'09	'10
Notified cases	218	237	227	203	211
Rate per 100,000	18.4	19.8	18.8	16.6	17.1
Sputum smear pos. pul. cases	92	90	102	67	76
Rate per 100,000	7.8	7.5	8.4	5.5	6.2



◆ Saitama ■ Best prefec./city × Japan

†Excluding unknown delay(%)	'06	'07	'08	'09	'10	Year of registration	'07	'08	'09	Japan
	43.0	60.3	94.0	1.7	6.4	Median days of treatment (all forms)	270	264	274	(270)
‡Excluding unknown Tx (%)	'06	'07	'08	'09	'10	Median days of hospitalization (pul.TB)	57	78	62	(68)
	50.8	6.6	2.0	0.6	2.3					