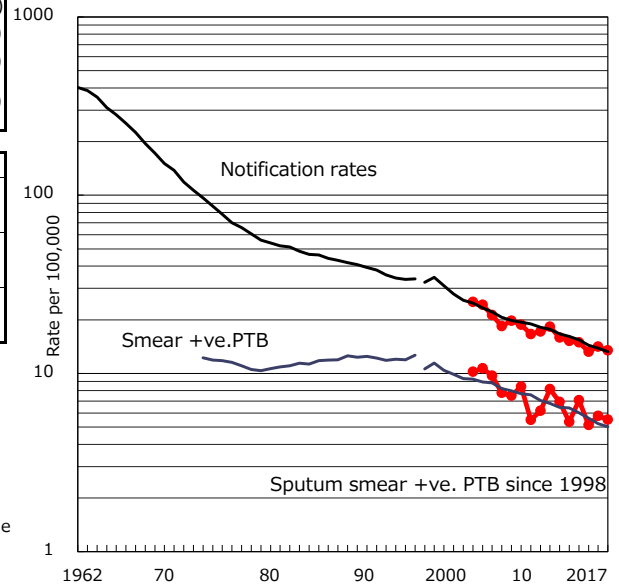


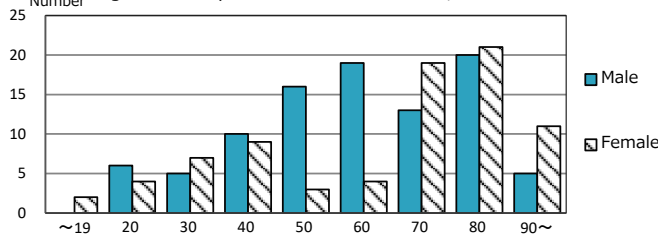
| | |
|--|----------------|
| TB statistics in 2017 (Population in Saitama C. 1,290,505) | |
| Among newly notified : (Japan) | |
| Foreign borns | 14 8.0% (9.1%) |
| TB cases with homeless history | 6 3.4% (0.9%) |
| Male aged 35-59, without job and receiving public assistance | 5 16.1% (7.3%) |

| Trends | '13 | '14 | '15 | '16 | 2017 |
|-------------------------------|------|------|------|------|------|
| Notified cases | 190 | 188 | 168 | 182 | 174 |
| Rate per 100,000 population | 15.2 | 14.9 | 13.2 | 14.1 | 13.5 |
| Sputum smear +ve. PTB | 67 | 89 | 65 | 74 | 71 |
| Rate per 100,000 population | 5.4 | 7.1 | 5.1 | 5.7 | 5.5 |
| Latent Tuberculosis Infection | 45 | 80 | 34 | 59 | 43 |
| Rate per 100,000 population | 3.6 | 6.3 | 2.7 | 4.6 | 3.3 |

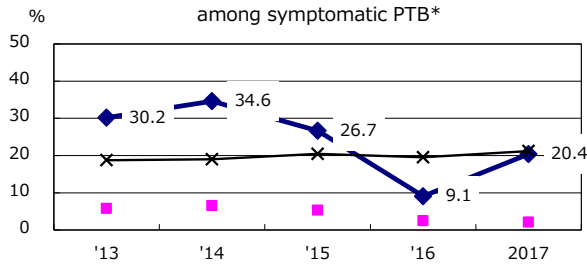
Trends of TB notification rates, all forms and smear +ve.PTB



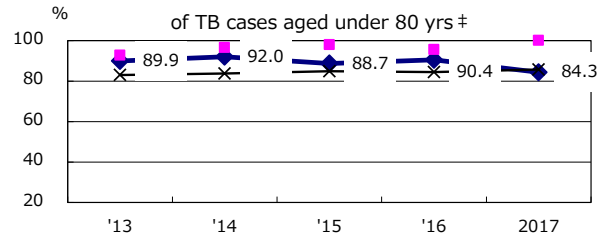
Age-sex composition of notified cases, 2017



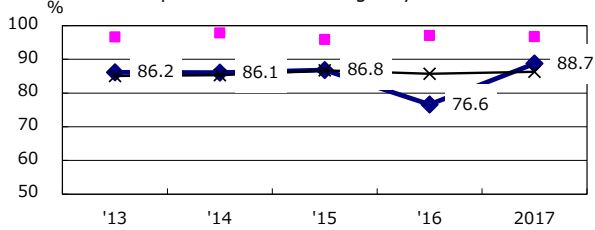
Proportion of cases with total diagnosis delay(> 3 mths) among symptomatic PTB*



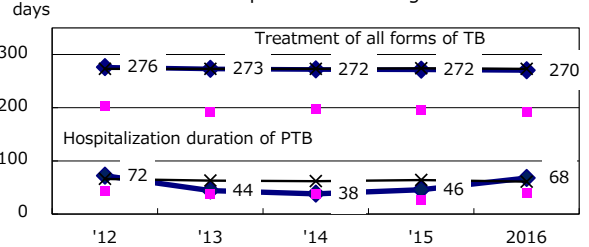
Proportion of TX with HRZ-E/S among all forms



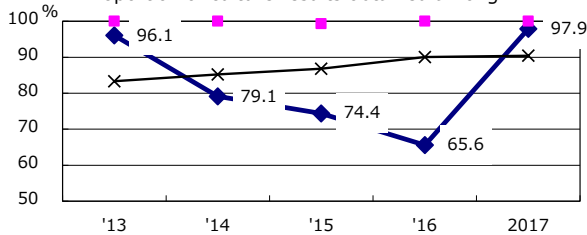
Proportion of Bacteriologically +ve. PTB



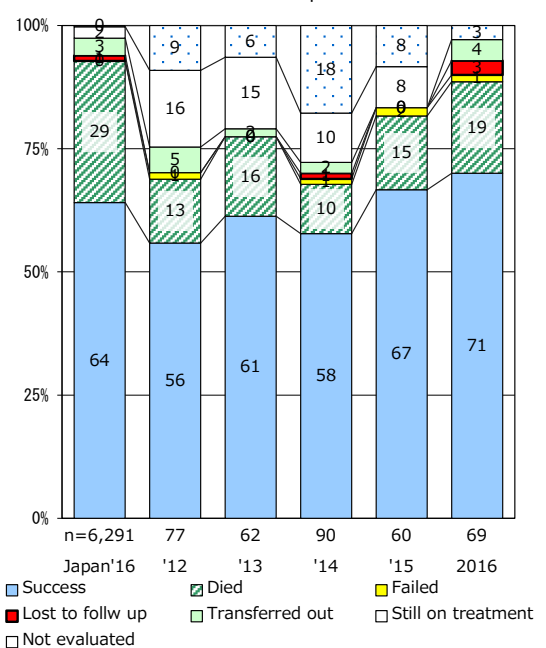
Median duration of treatment of all forms and hospitalization among PTB



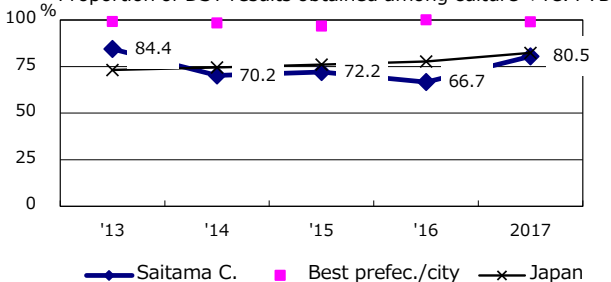
Proportion of culture results obtained among PTB



Treatment outcomes of new sputum smear +ve.TB



Proportion of DST results obtained among culture +ve. PTB



PTB : pulmonary TB

| | | | | | |
|------------------------------|------|------|------|------|------|
| † Excluding unknown delay(%) | '13 | '14 | '15 | '16 | 2017 |
| | 10.3 | 59.1 | 85.7 | 91.1 | 6.7 |

| | | | | | |
|---------------------------|-----|-----|-----|-----|------|
| ‡ Excluding unknown Tx(%) | '13 | '14 | '15 | '16 | 2017 |
| | 2.1 | 6.0 | 1.7 | 7.3 | 1.7 |