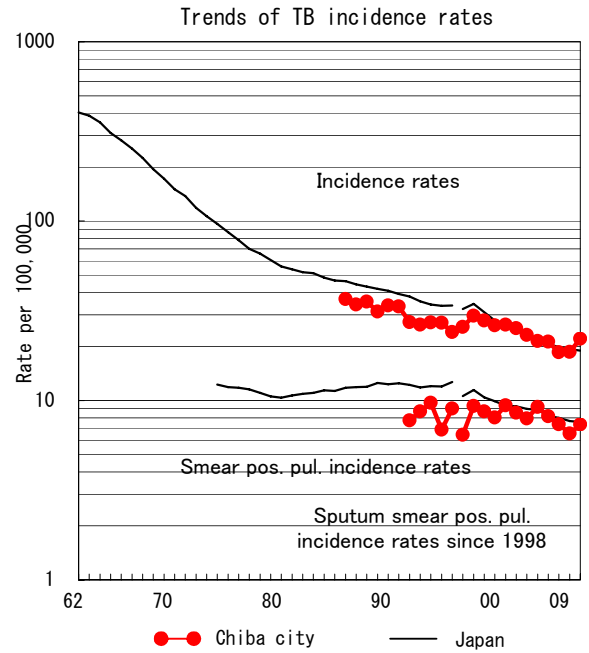
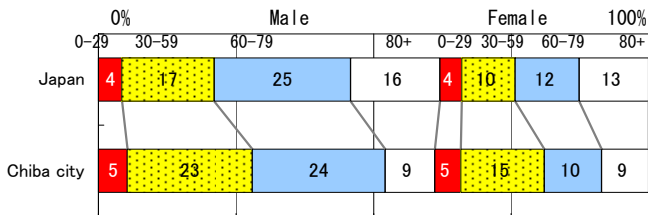


# Chiba city

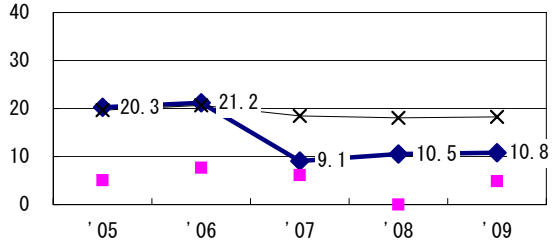
TB statistics in 2009		
Population	955,279	(Japan)
Foreigners	20	9.5% (3.9%)
Estimated homeless or poor TB among male cases aged 30-59 yrs	6	12.5% (12.0%)

Trends	'05	'06	'07	'08	'09
Notified cases	198	198	174	177	211
Rate per 100,000	21.4	21.3	18.6	18.7	22.1
Sputum smear pos. pul. cases	85	76	69	62	70
Rate per 100,000	9.2	8.2	7.4	6.5	7.3

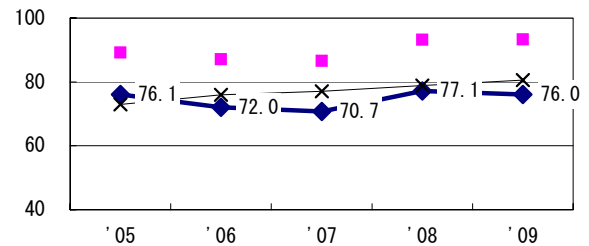
Age-sex composition of notified cases, 2009



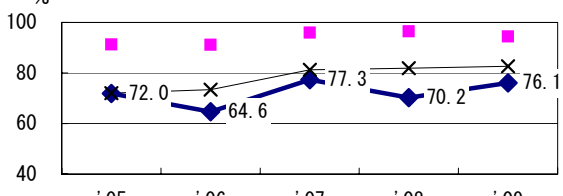
Proportion of cases with long case finding delay (>3M) among symptomatic pul. TB †



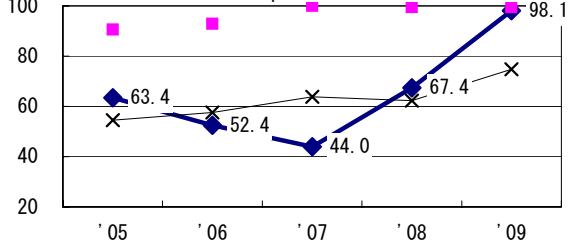
Proportion of Tx with HRZ-E/S among all forms of TB cases aged under 80 yrs ‡



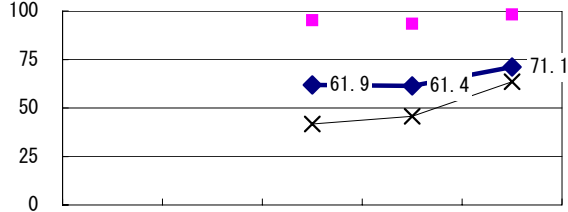
Proportion of bacillary cases among pul. TB



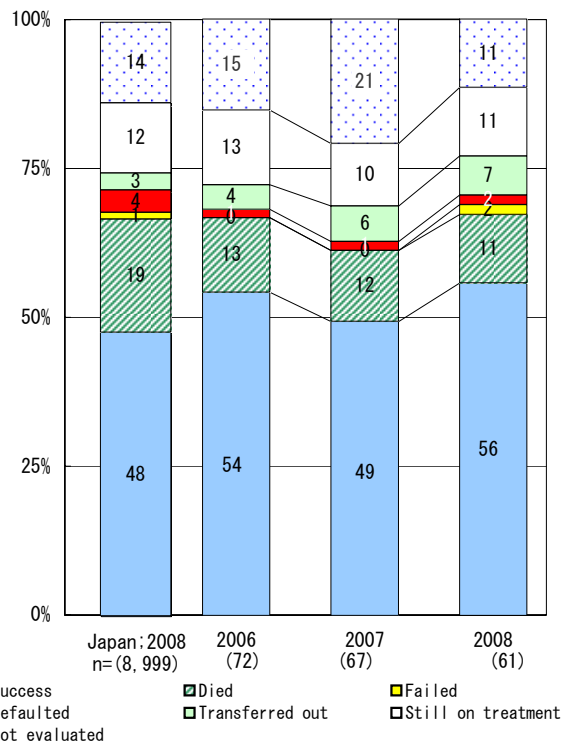
Proportion of culture results obtained among pul. TB



Proportion of DST results obtained among culture pos. pul. TB



Treatment outcomes of new sputum smear-pos. pul. cases registered in 2006-2008



	'05	'06	'07	'08	'09
† Excluding unk delay (%)	16.9	25.0	55.6	80.0	60.2
‡ Excluding unk Tx (%)	6.5	5.3	4.1	9.0	0.0

Registered year	'07	'08	Japan
Median days of treatment (all forms)	250	237	(272)
Median days of hospitalization (pul. TB)	37	57	(67)