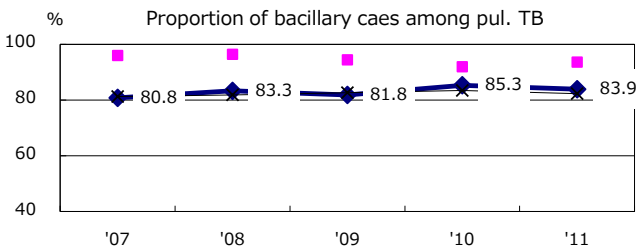
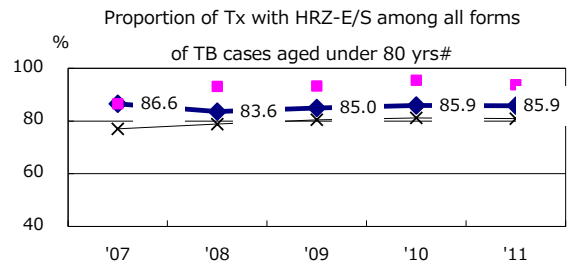
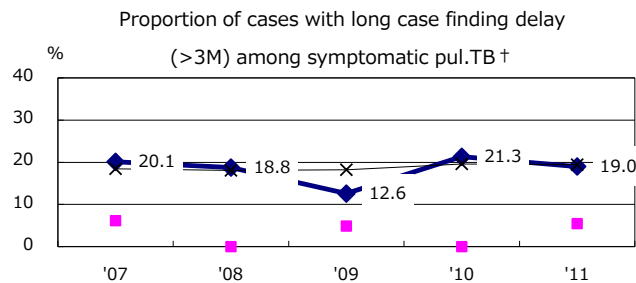
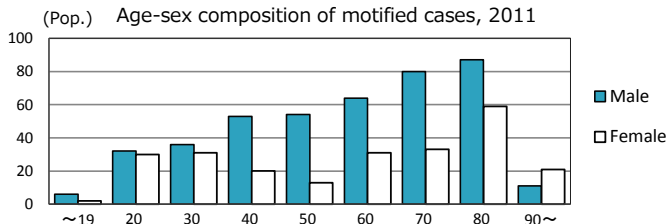
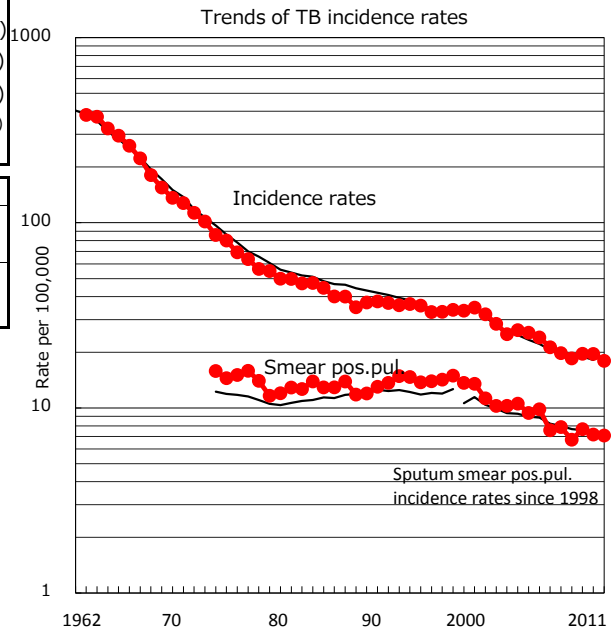
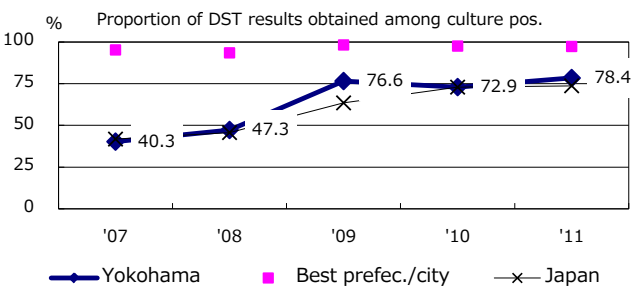
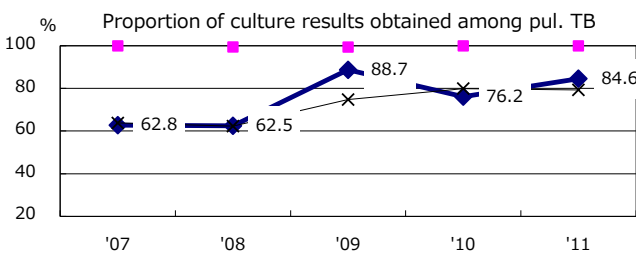
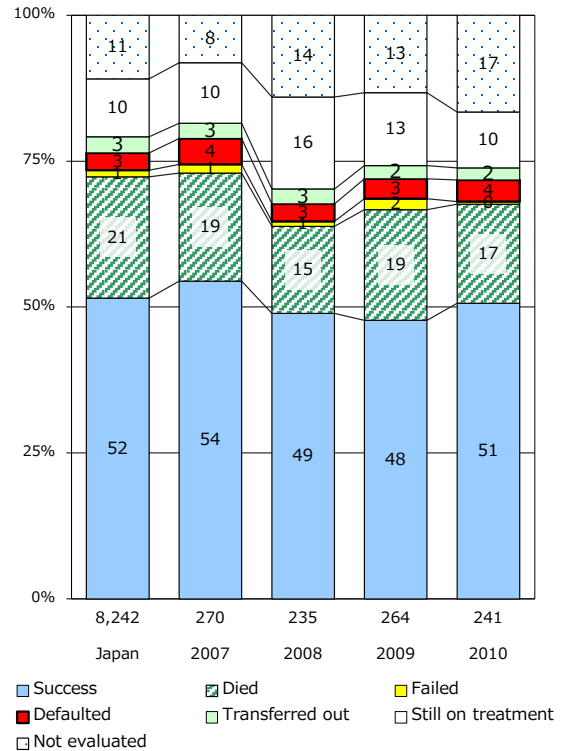


| TB statistics in 2011 | | | |
|---|-----------|-------|---------|
| Population | 3,691,693 | | (Japan) |
| Foreign borns | 31 | 4.7% | (4.1%) |
| TB patients with homeless history | 23 | 3.5% | (1.4%) |
| Jobless TB patients getting public assistance, proportion among male TB patients aged 35-59 yrs | 25 | 17.5% | (10.6%) |

| Trends | '07 | '08 | '09 | '10 | '11 |
|------------------------------|------|------|------|------|------|
| Notified cases | 717 | 676 | 720 | 722 | 663 |
| Rate per 100,000 | 19.8 | 18.5 | 19.6 | 19.6 | 18.0 |
| Sputum smear pos. pul. cases | 286 | 246 | 282 | 265 | 262 |
| Rate per 100,000 | 7.9 | 6.7 | 7.7 | 7.2 | 7.1 |



Treatment outcomes of new sputum smear-positive cases registered in 2007-2010



| | '07 | '08 | '09 | '10 | '11 | Year of registration | '07 | '08 | '09 | '10 | Japan |
|------------------------------|------|------|------|------|------|---|-----|-----|-----|-----|-------|
| † Excluding unknown delay(%) | 48.4 | 59.5 | 56.3 | 49.2 | 46.6 | Median days of treatment (all forms) | 273 | 240 | 268 | 218 | (272) |
| # Excluding unknown Tx(%) | 1.4 | 2.2 | 2.3 | 4.3 | 2.3 | Median days of hospitalization (pul.TB) | 41 | 58 | 62 | 64 | (65) |