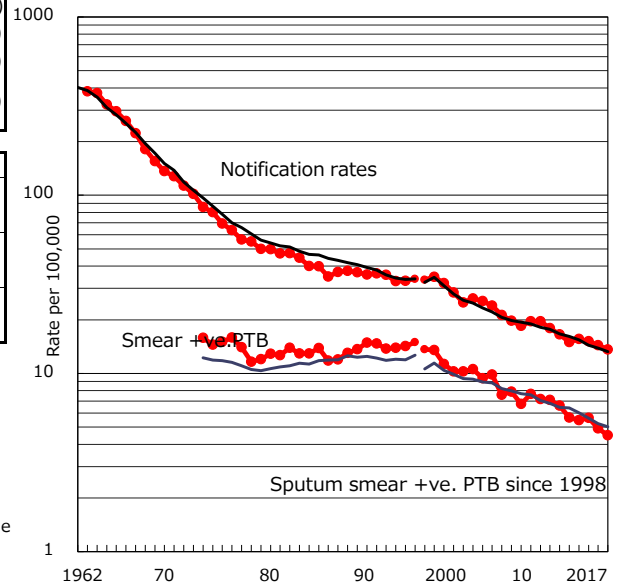


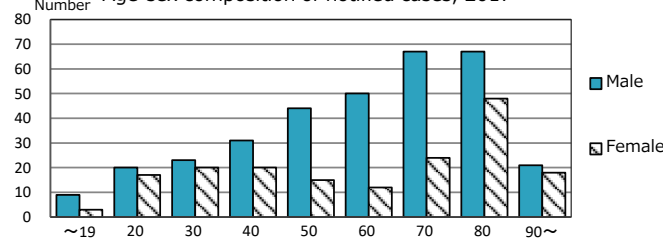
TB statistics in 2017 (Population in Yokohama C. 3,733,234)	
Among newly notified :	(Japan)
Foreign borns	41 7.6% (9.1%)
TB cases with homeless history	10 2.0% (0.9%)
Male aged 35-59, without job and receiving public assistance	12 12.2% (7.3%)

Trends	'13	'14	'15	'16	2017
Notified cases	554	578	565	538	509
Rate per 100,000 population	15.0	15.6	15.2	14.4	13.6
Sputum smear +ve. PTB	209	203	210	183	168
Rate per 100,000 population	5.6	5.5	5.6	4.9	4.5
Latent Tuberculosis Infection	162	197	179	200	213
Rate per 100,000 population	4.4	5.3	4.8	5.4	5.7

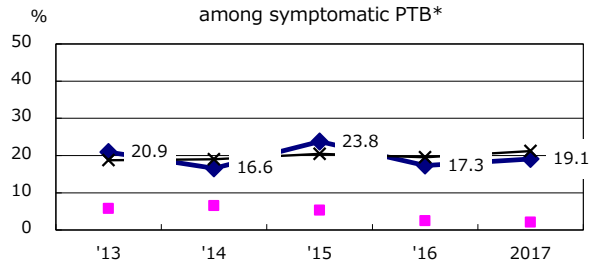
Trends of TB notification rates, all forms and smear +ve.PTB



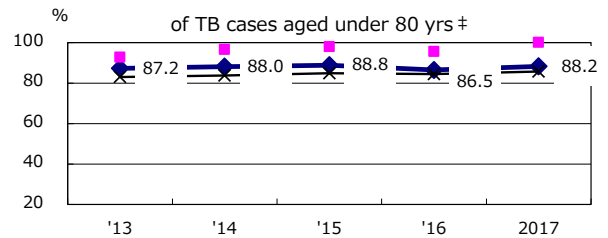
Age-sex composition of notified cases, 2017



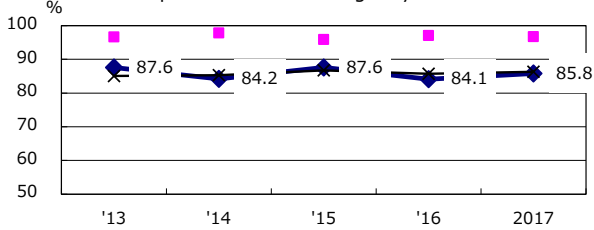
Proportion of cases with total diagnosis delay (> 3 mths) among symptomatic PTB*



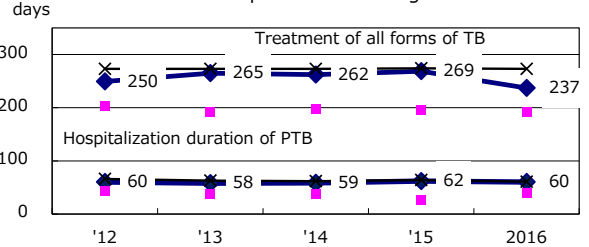
Proportion of TX with HRZ-E/S among all forms of TB cases aged under 80 yrs †



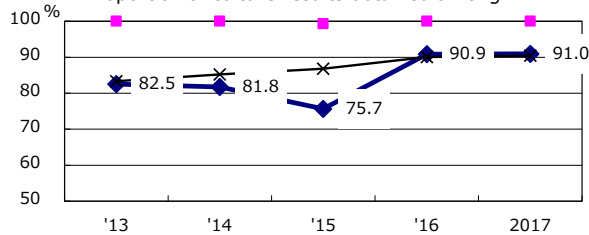
Proportion of Bacteriologically +ve. PTB



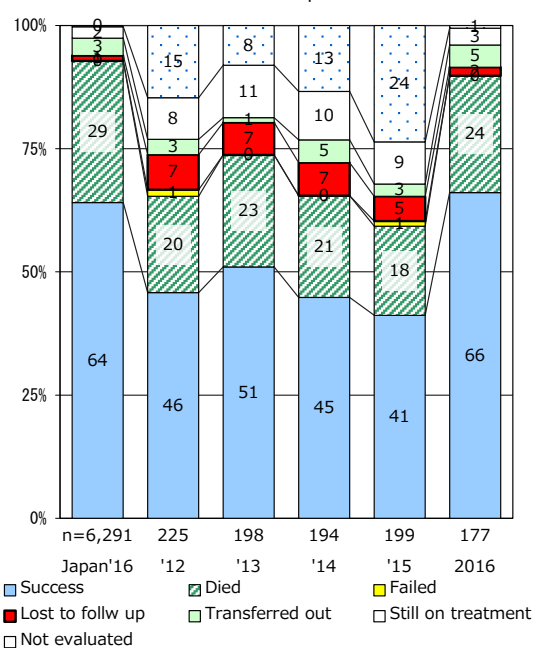
Median duration of treatment of all forms and hospitalization among PTB



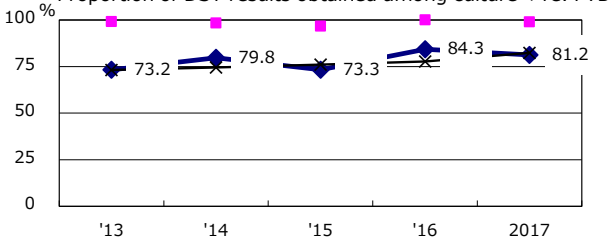
Proportion of culture results obtained among PTB



Treatment outcomes of new sputum smear +ve.TB



Proportion of DST results obtained among culture +ve. PTB



PTB : pulmonary TB

† Excluding unknown delay(%)	'13	'14	'15	'16	2017
	44.0	39.1	52.3	37.1	51.3

‡ Excluding unknown Tx(%)	'13	'14	'15	'16	2017
	2.0	4.4	5.0	4.3	2.0