

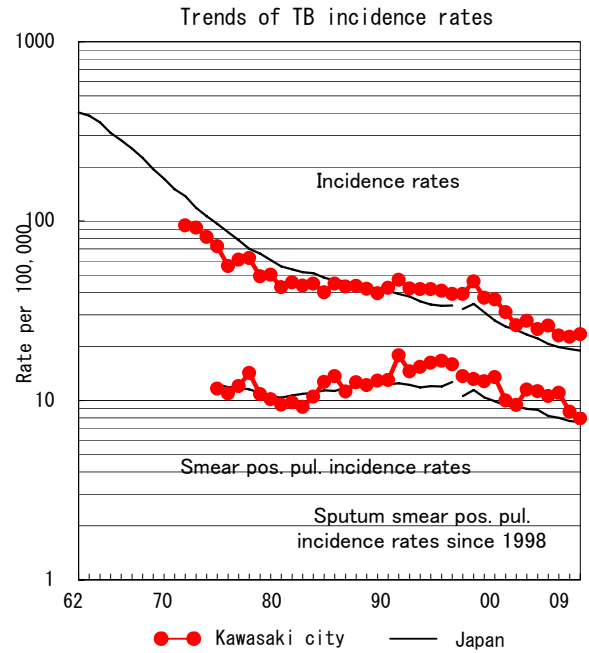
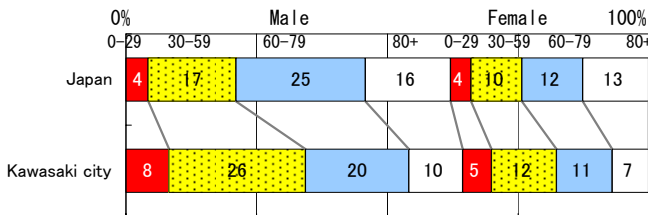
M6

Kawasaki city

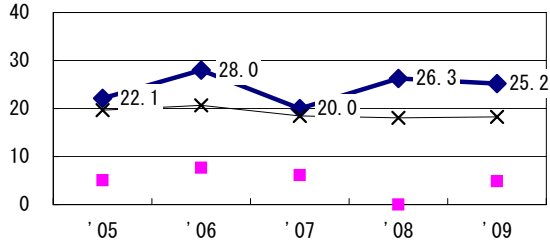
TB statistics in 2009		
Population	1,409,558	(Japan)
Foreigners	19	5.8% (3.9%)
Estimated homeless or poor TB among male cases aged 30-59 yrs	16	18.6% (12.0%)

Trends	'05	'06	'07	'08	'09
Notified cases	332	351	315	315	329
Rate per 100,000	25.0	26.1	23.0	22.7	23.3
Sputum smear pos. pul. cases	149	142	151	120	112
Rate per 100,000	11.2	10.6	11.0	8.6	7.9

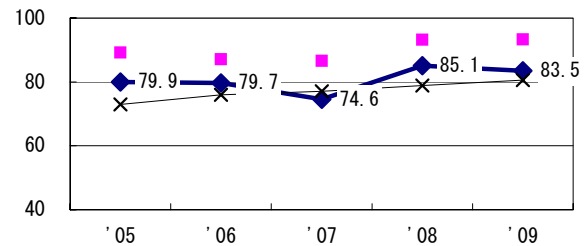
Age-sex composition of notified cases, 2009



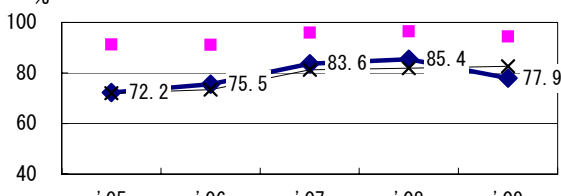
Proportion of cases with long case finding delay (>3M) among symptomatic pul. TB †



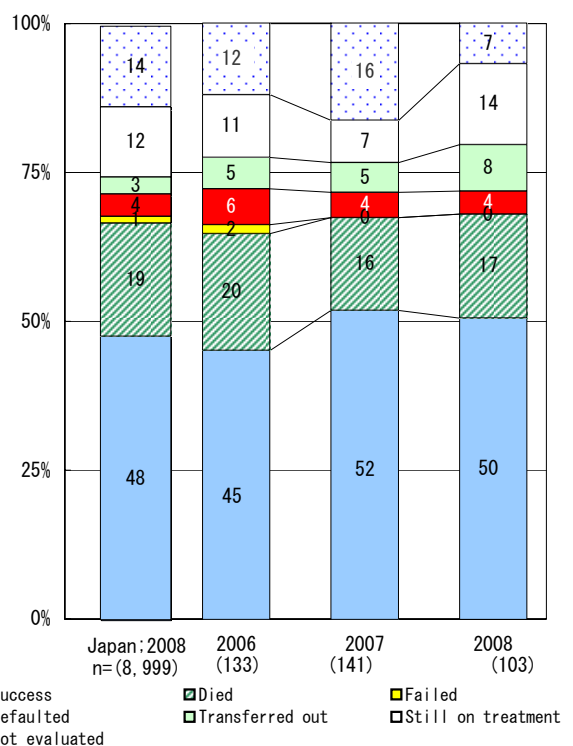
Proportion of Tx with HRZ-E/S among all forms of TB cases aged under 80 yrs ‡



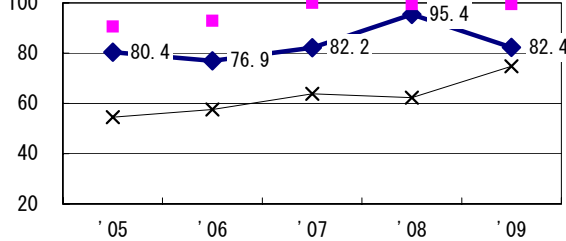
Proportion of bacillary cases among pul. TB



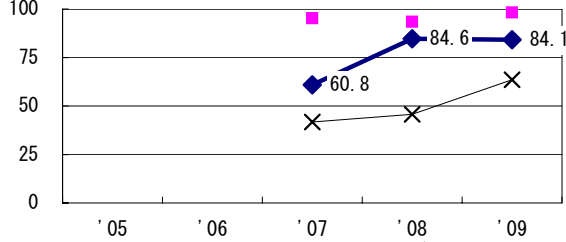
Treatment outcomes of new sputum smear-pos. pul. cases registered in 2006-2008



Proportion of culture results obtained among pul. TB



Proportion of DST results obtained among culture pos. pul. TB



	'05	'06	'07	'08	'09
† Excluding unk delay (%)	5.7	7.2	19.8	9.3	23.0
‡ Excluding unk Tx (%)	1.7	3.7	2.7	0.0	0.4

Registered year	'07	'08	Japan
Median days of treatment (all forms)	262	223	(272)
Median days of hospitalization (pul. TB)	53	50	(67)