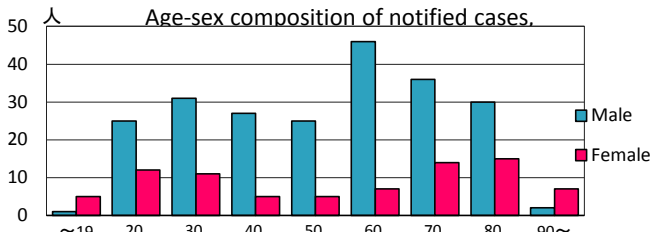
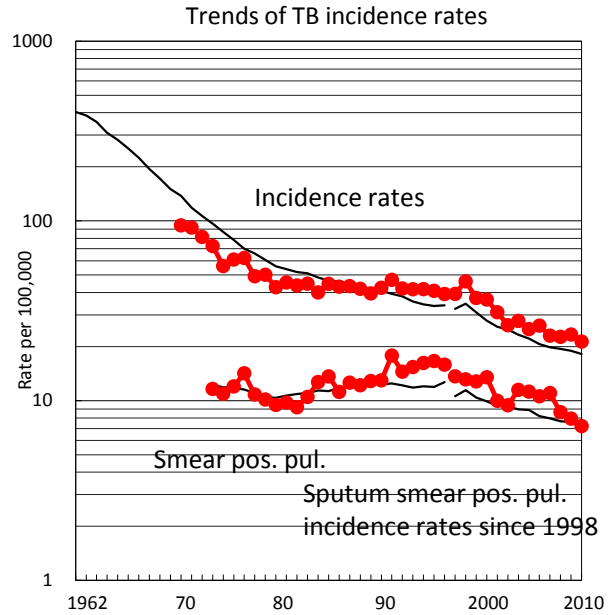
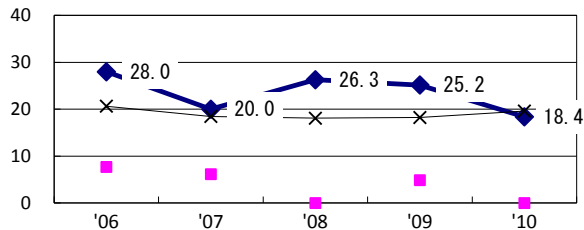


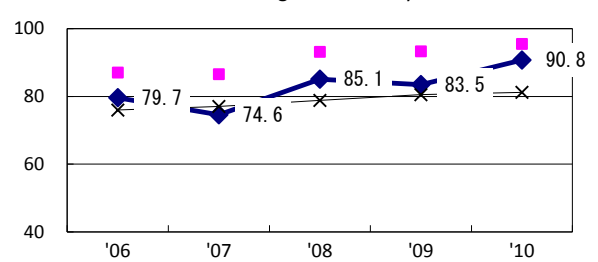
TB statistics in 2010					
Population	1,425,678			(Japan)	
Foreign borns	20	6.6%	(4.1%)		
TB patients with homeless history	10	3.3%	(1.4%)		
Jobless TB patients getting public assistance, proportion among male TB patients aged 35-59 yrs	1	1.2%	(10.8%)		
Trends	'06	'07	'08	'09	'10
Notified cases	351	315	315	329	304
Rate per 100,000	26.1	23.0	22.7	23.3	21.3
Sputum smear pos. pul. cases	142	151	120	112	103
Rate per 100,000	10.6	11.0	8.6	7.9	7.2



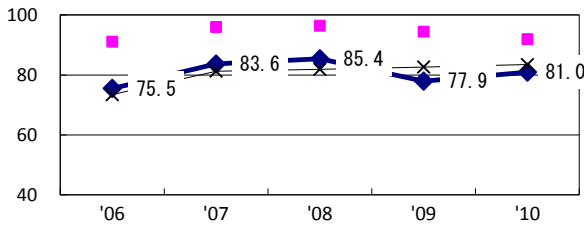
Proportion of cases with long case finding delay (>3M) among symptomatic pul. TB †



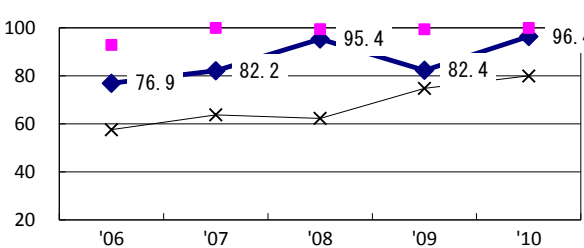
Proportion of Tx with HRZ-E/S among all forms of TB cases aged under 80 yrs*



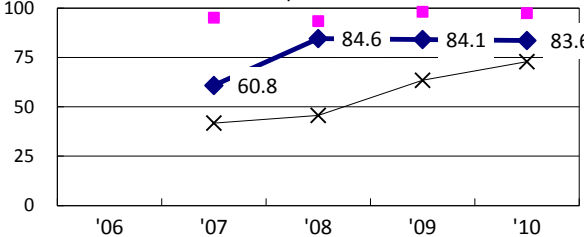
Proportion of bacillary cases among pul. TB



Proportion of culture results obtained among pul. TB

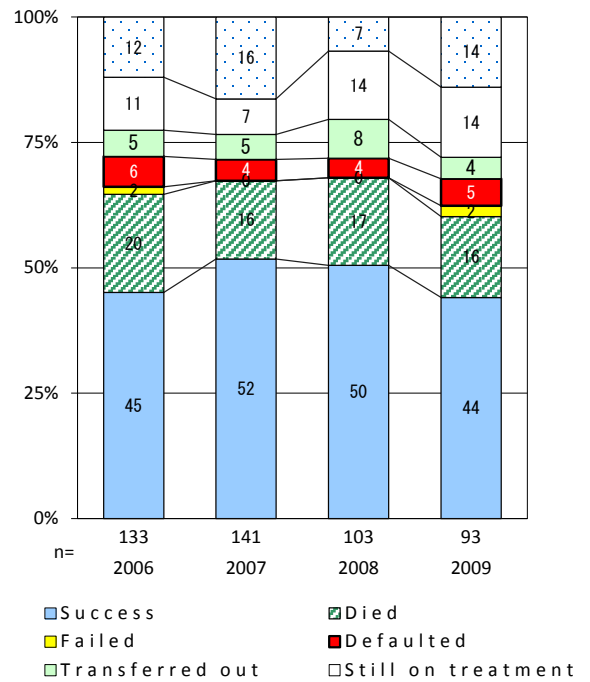


Proportion of DST results obtained among culture pos. pul. TB



◆ Kawasaki ■ Best prefec./city × Japan

Treatment outcomes of new sputum smear-pos. pul. cases registered in 2006-2009



	'06	'07	'08	'09	'10	Year of registration	'07	'08	'09	Japan
†Excluding unknown delay(%)	7.2	19.8	9.3	23.0	25.3	Median days of treatment (all forms)	262	223	210	(270)
‡Excluding unknown Tx (%)	3.7	4.2	1.1	1.8	0.4	Median days of hospitalization (pul.TB)	53	50	65	(68)