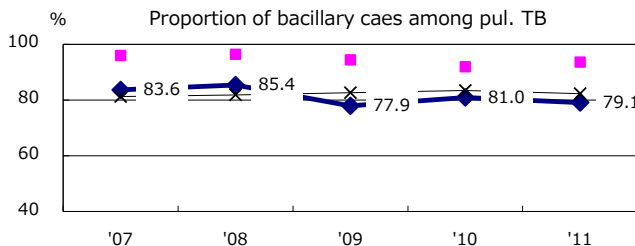
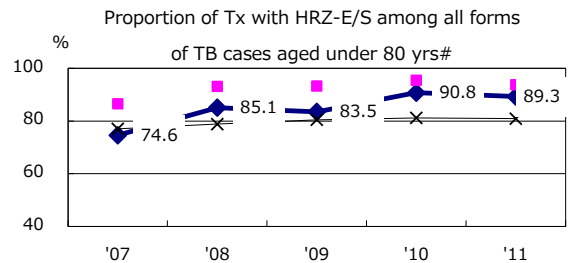
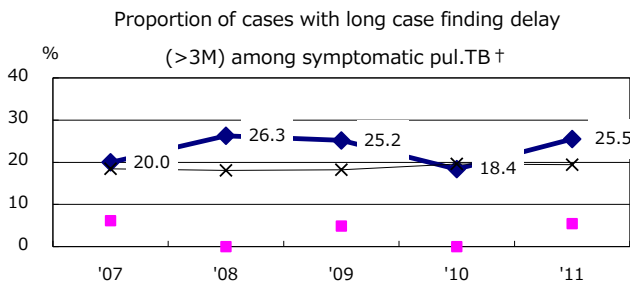
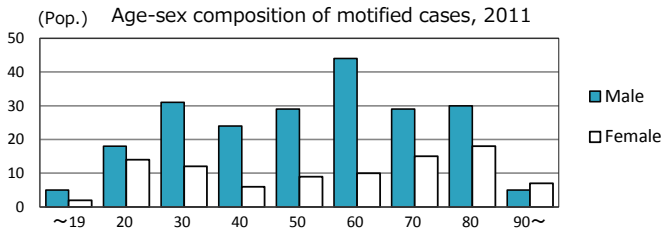
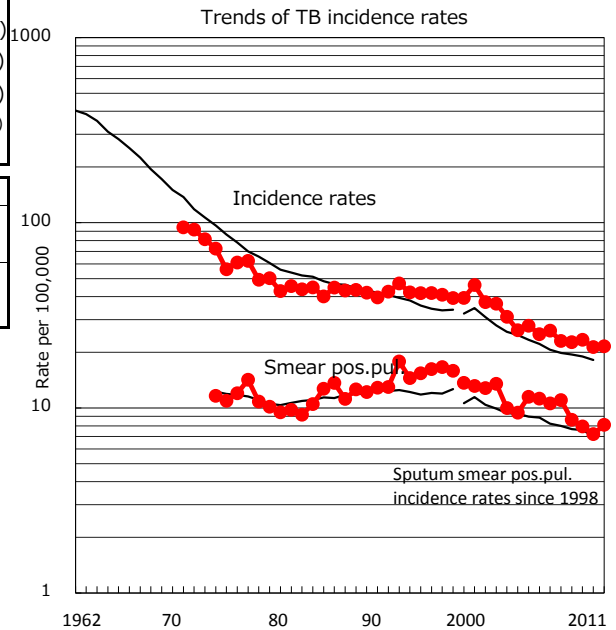
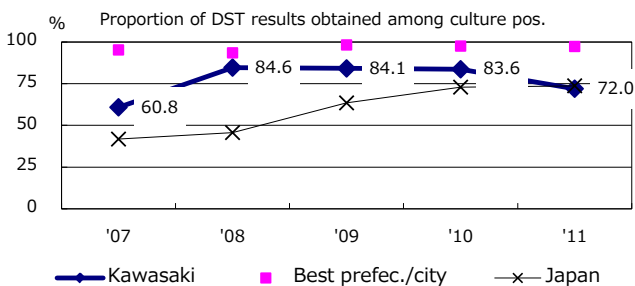
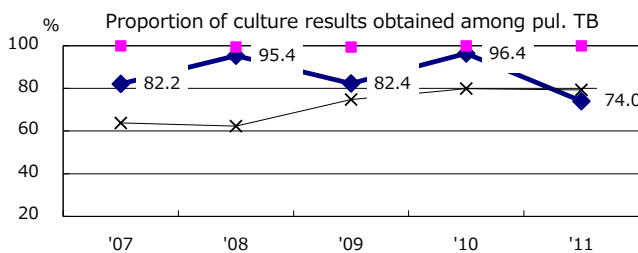
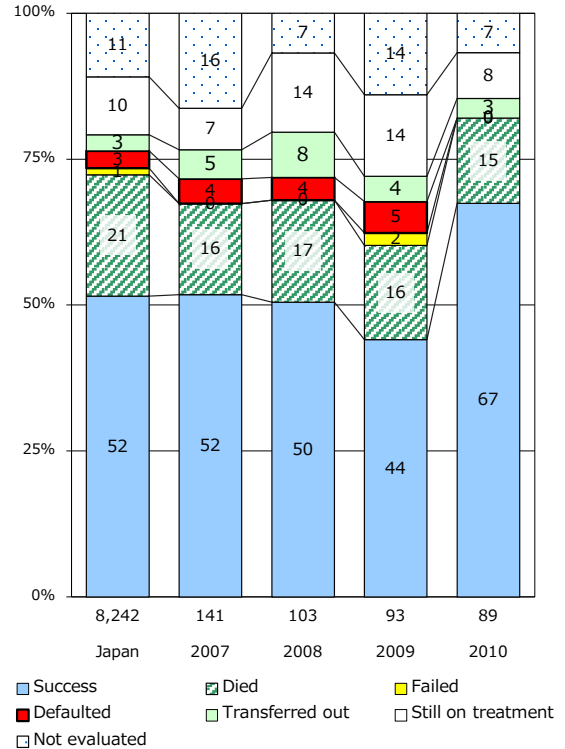


TB statistics in 2011		
Population	1,430,773	(Japan)
Foreign borns	10	3.2% (4.1%)
TB patients with homeless history	11	3.6% (1.4%)
Jobless TB patients getting public assistance, proportion among male TB patients aged 35-59 yrs	10	11.9% (10.6%)

Trends	'07	'08	'09	'10	'11
Notified cases	315	315	329	304	308
Rate per 100,000	23.0	22.7	23.3	21.3	21.5
Sputum smear pos. pul. cases	151	120	112	103	116
Rate per 100,000	11.0	8.6	7.9	7.2	8.1



Treatment outcomes of new sputum smear-pos. cases registered in 2007-2010



	'07	'08	'09	'10	'11	Year of registration	'07	'08	'09	'10	Japan
† Excluding unknown delay(%)	19.8	9.3	23.0	25.3	45.6	Median days of treatment (all forms)	262	223	210	270	(272)
# Excluding unknown Tx(%)	4.2	1.1	1.8	0.4	2.0	Median days of hospitalization (pul. TB)	53	50	65	63	(65)