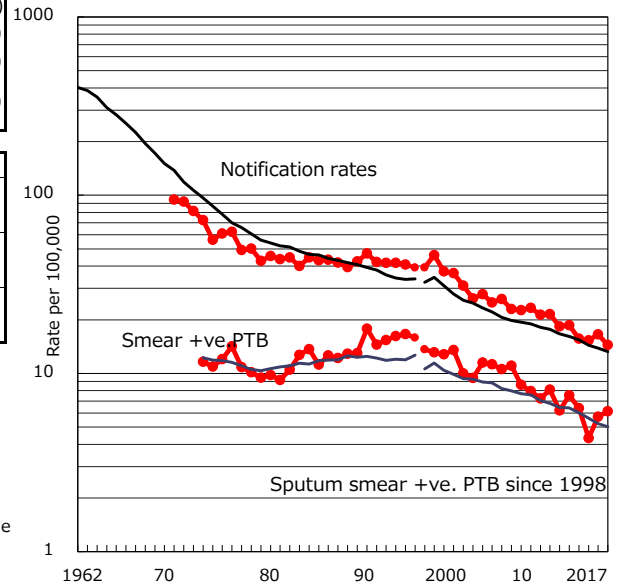


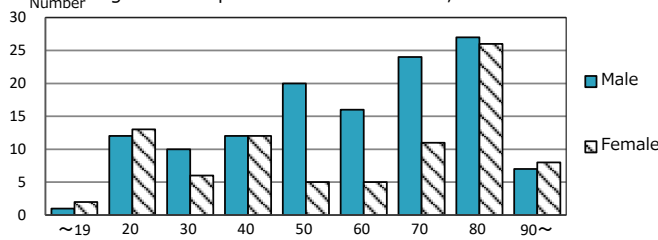
TB statistics in 2017 (Population in Kawasaki C. 1,503,690)	
Among newly notified :	(Japan)
Foreign borns	15 6.9% (9.1%)
TB cases with homeless history	3 1.4% (0.9%)
Male aged 35-59,without job and receiving public assistance	8 19.0% (7.3%)

Trends	'13	'14	'15	'16	2017
Notified cases	270	229	226	249	217
Rate per 100,000 population	18.6	15.7	15.3	16.6	14.4
Sputum smear +ve. PTB	109	93	64	85	92
Rate per 100,000 population	7.5	6.4	4.3	5.7	6.1
Latent Tuberculosis Infection	85	73	97	74	87
Rate per 100,000 population	5.9	5.0	6.6	4.9	5.8

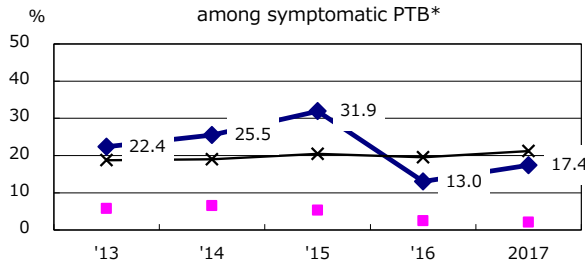
Trends of TB notification rates, all forms and smear +ve.PTB



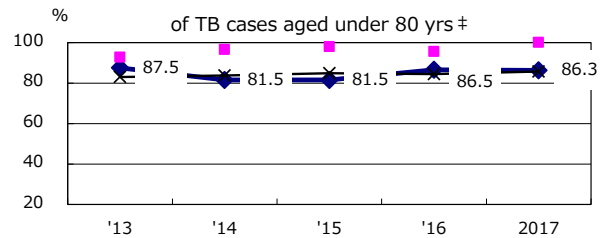
Age-sex composition of notified cases, 2017



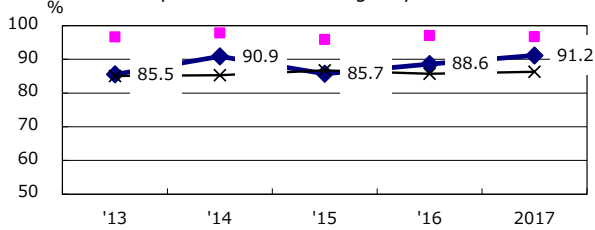
Proportion of cases with total diagnosis delay(> 3 mths) among symptomatic PTB*



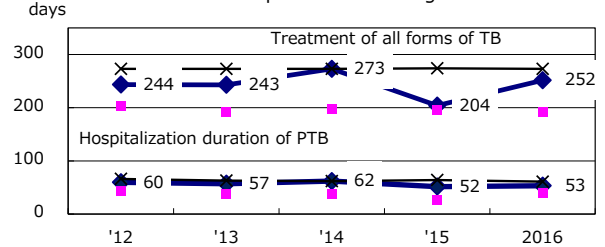
Proportion of TX with HRZ-E/S among all forms of TB cases aged under 80 yrs †



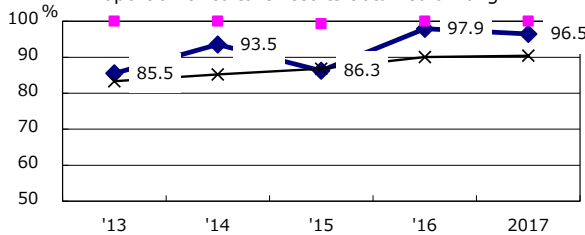
Proportion of Bacteriologically +ve. PTB



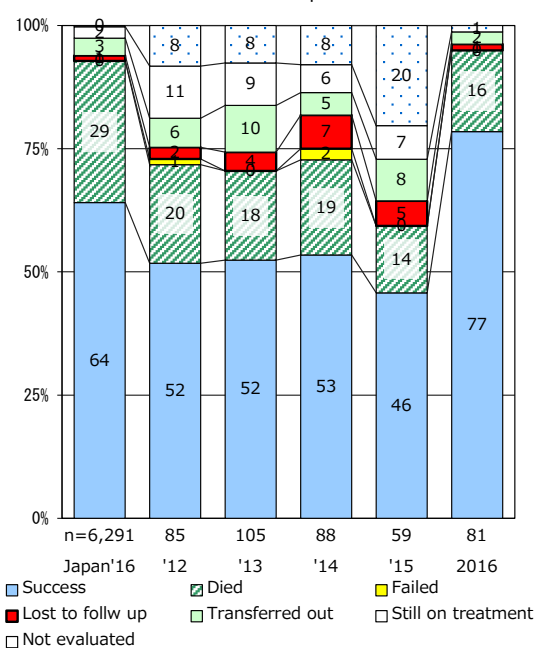
Median duration of treatment of all forms and hospitalization among PTB



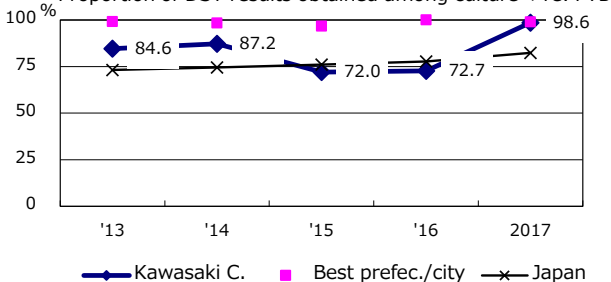
Proportion of culture results obtained among PTB



Treatment outcomes of new sputum smear +ve.TB



Proportion of DST results obtained among culture +ve. PTB



PTB : pulmonary TB

† Excluding unknown delay(%)	'13	'14	'15	'16	2017
	56.8	65.4	63.3	64.9	81.7

‡ Excluding unknown Tx(%)	'13	'14	'15	'16	2017
	3.4	0.6	1.8	0.6	2.0