

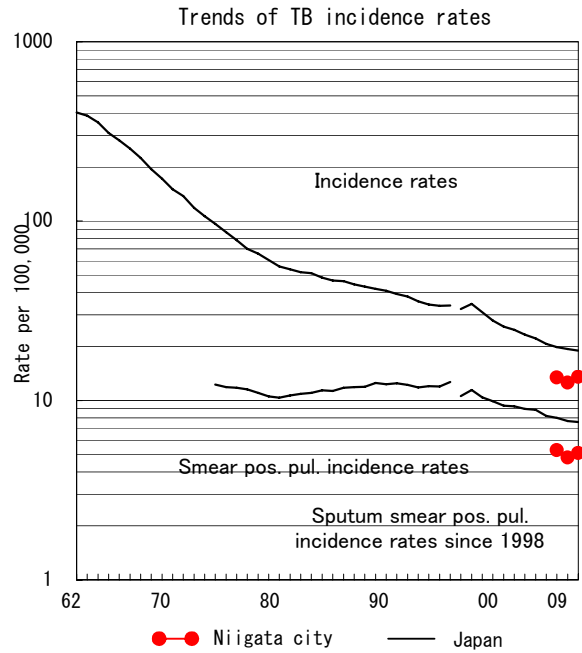
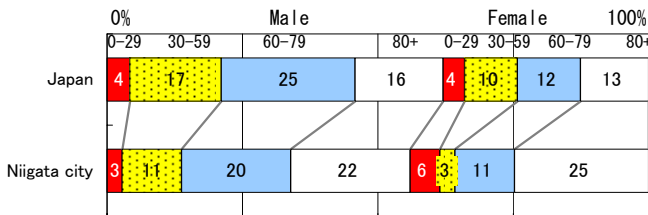
M7

Niigata city

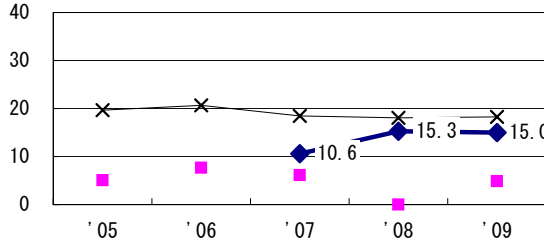
TB statistics in 2009		
Population	804,290	(Japan)
Foreigners	1	0.9% (3.9%)
Estimated homeless or poor TB among male cases aged 30-59 yrs	0	0.0% (12.0%)

Trends	'05	'06	'07	'08	'09
Notified cases	-	-	109	102	109
Rate per 100,000	-	-	13.4	12.6	13.6
Sputum smear pos. pul. cases	-	-	43	39	41
Rate per 100,000	-	-	5.3	4.8	5.1

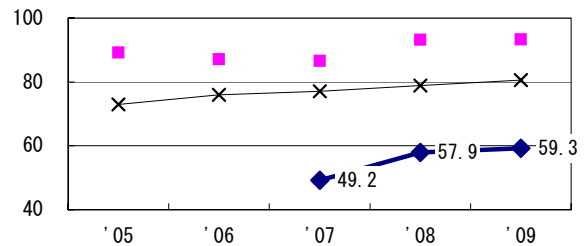
Age-sex composition of notified cases, 2009



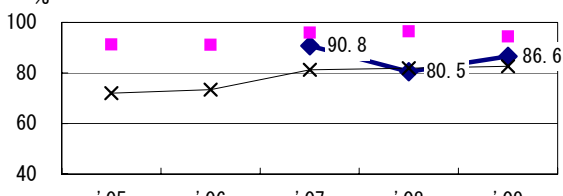
Proportion of cases with long case finding delay (>3M) among symptomatic pul. TB †



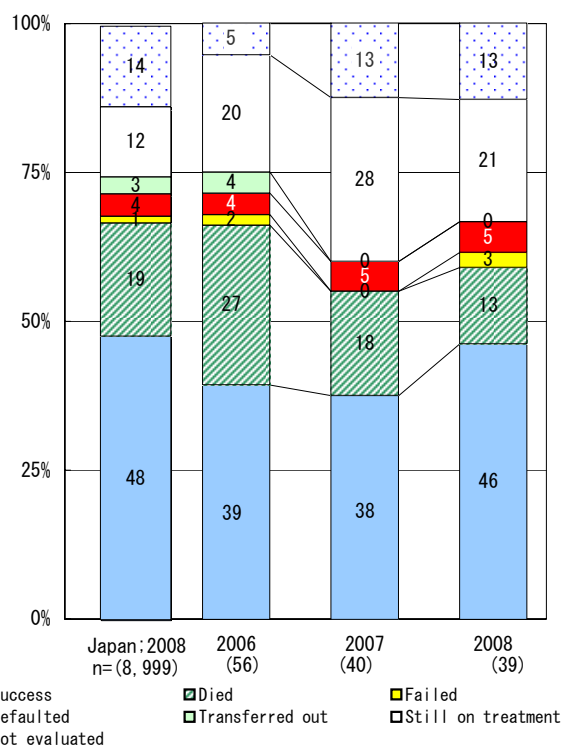
Proportion of Tx with HRZ-E/S among all forms of TB cases aged under 80 yrs ‡



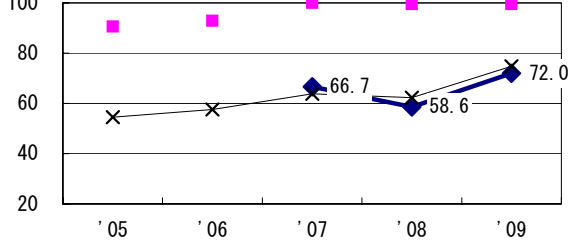
Proportion of bacillary cases among pul. TB



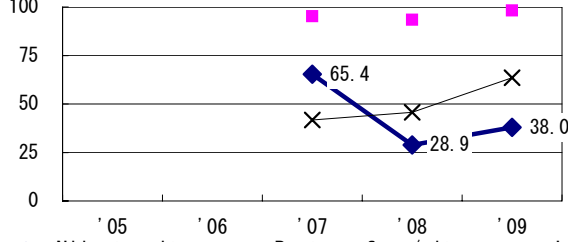
Treatment outcomes of new sputum smear-pos. pul. cases registered in 2006-2008



Proportion of culture results obtained among pul. TB



Proportion of DST results obtained among culture pos. pul. TB



† Excluding unk delay (%) ‡ Excluding unk Tx (%)

	'05	'06	'07	'08	'09
† Excluding unk delay (%)	-	-	0.0	10.6	4.8
‡ Excluding unk Tx (%)	-	-	1.5	0.0	3.4

Registered year	'07	'08	Japan
Median days of treatment (all forms)	330	296	(272)
Median days of hospitalization (pul. TB)	60	59	(67)