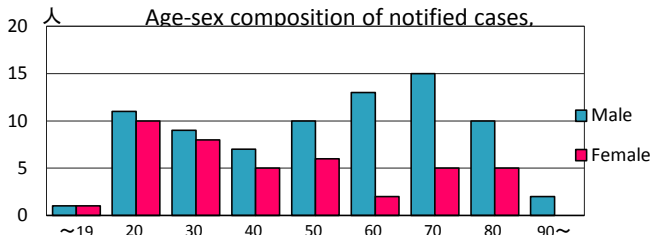
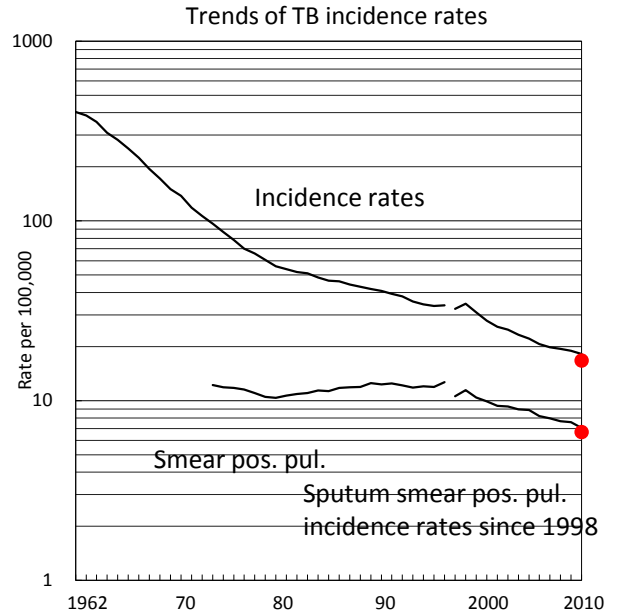
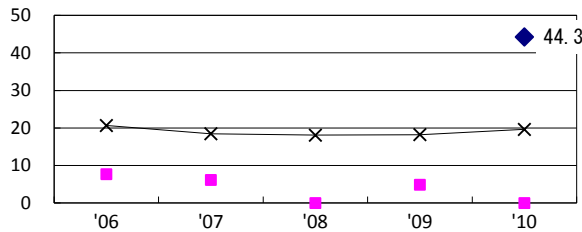


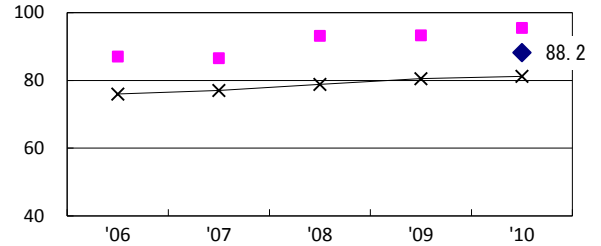
TB statistics in 2010					
Population	717,561			(Japan)	
Foreign borns	5	4.2%		(4.1%)	
TB patients with homeless history	0	0.0%		(1.4%)	
Jobless TB patients getting public assistance, proportion among male TB patients aged 35-59 yrs	3	11.5%		(10.8%)	
Trends	'06	'07	'08	'09	'10
Notified cases	-	-	-	-	120
Rate per 100,000	-	-	-	-	16.7
Sputum smear pos. pul. cases	-	-	-	-	48
Rate per 100,000	-	-	-	-	6.7



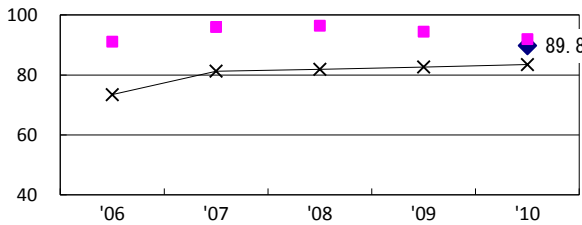
Proportion of cases with long case finding delay (>3M) among symptomatic pul. TB †



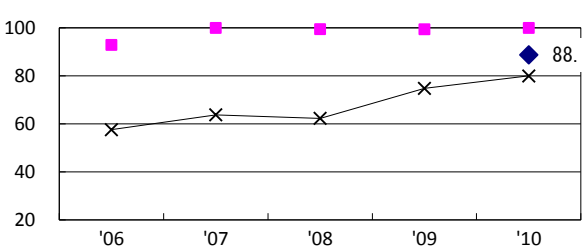
Proportion of Tx with HRZ-E/S among all forms of TB cases aged under 80 yrs‡



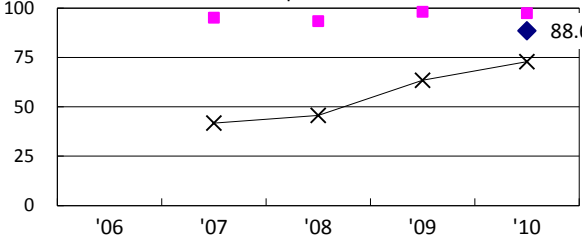
Proportion of bacillary cases among pul. TB



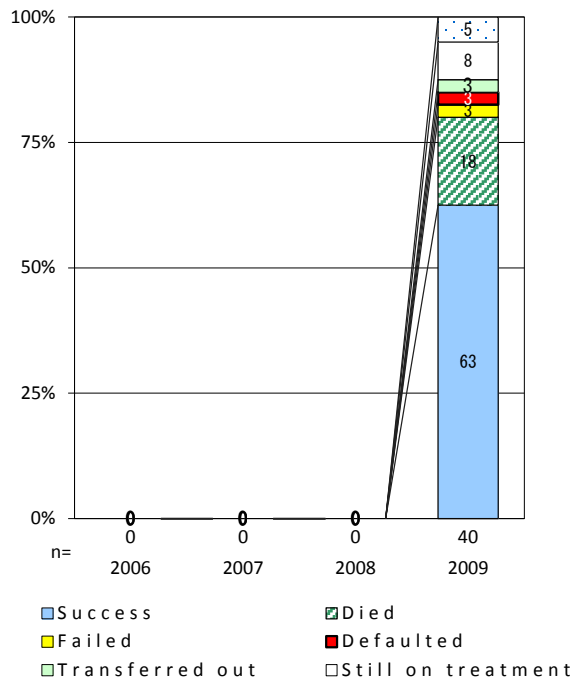
Proportion of culture results obtained among pul. TB



Proportion of DST results obtained among culture pos. pul. TB



Treatment outcomes of new sputum smear-pos. pul. cases registered in 2006-2009



◆ Sagamihara ■ Best prefec./city × Japan

†Excluding unknown delay(%)	-	-	-	-	9.0	Year of registration	'07	'08	'09	Japan
‡Excluding unknown Tx (%)	-	-	-	-	1.0	Median days of treatment (all forms)	-	-	267	(270)
						Median days of hospitalization (pul.TB)	-	-	46	(68)