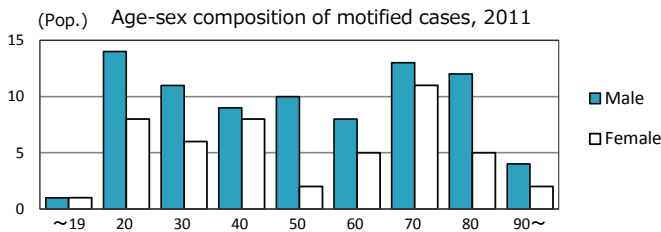
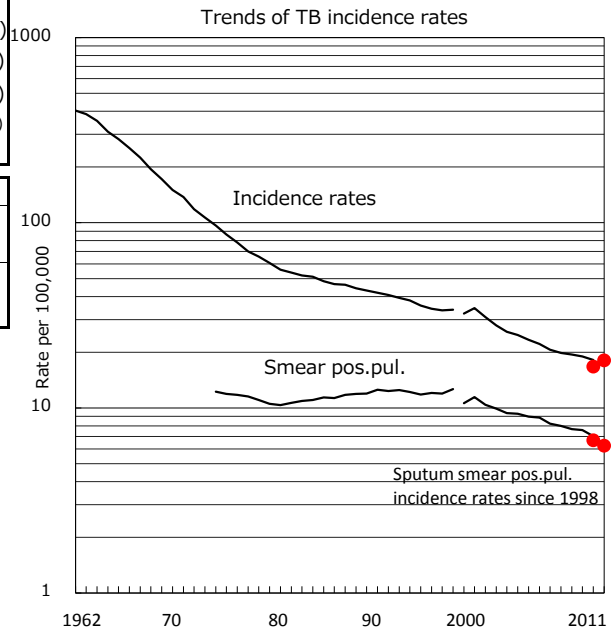
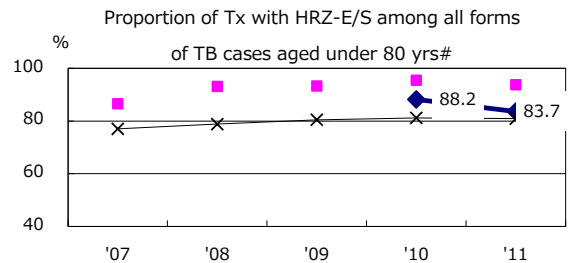
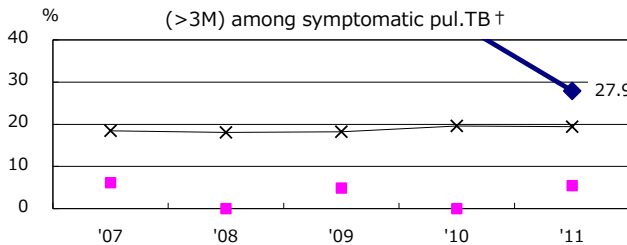


TB statistics in 2011		
Population	719,412	(Japan)
Foreign borns	10	7.7% (4.1%)
TB patients with homeless history	1	0.8% (1.4%)
Jobless TB patients getting public assistance, proportion among male TB patients aged 35-59 yrs	7	23.3% (10.6%)

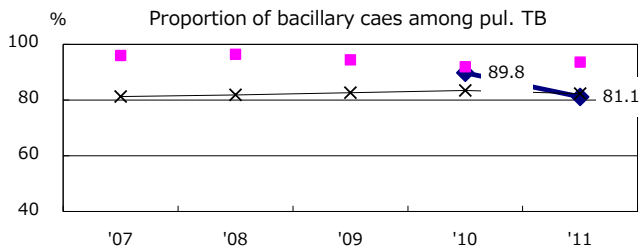
Trends	'07	'08	'09	'10	'11
Notified cases	-	-	-	120	130
Rate per 100,000	-	-	-	16.7	18.1
Sputum smear pos. pul. cases	-	-	-	48	45
Rate per 100,000	-	-	-	6.7	6.3



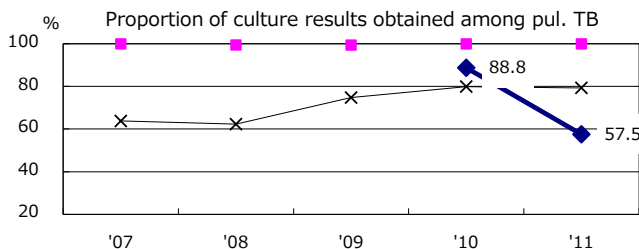
Proportion of cases with long case finding delay (>3M) among symptomatic pul. TB †



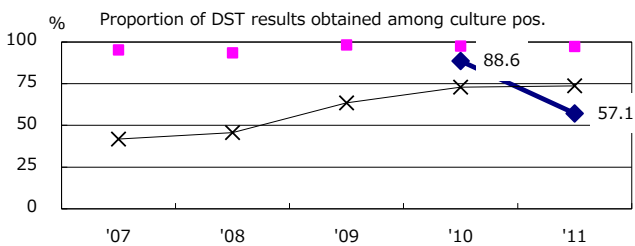
Proportion of bacillary cases among pul. TB



Proportion of culture results obtained among pul. TB

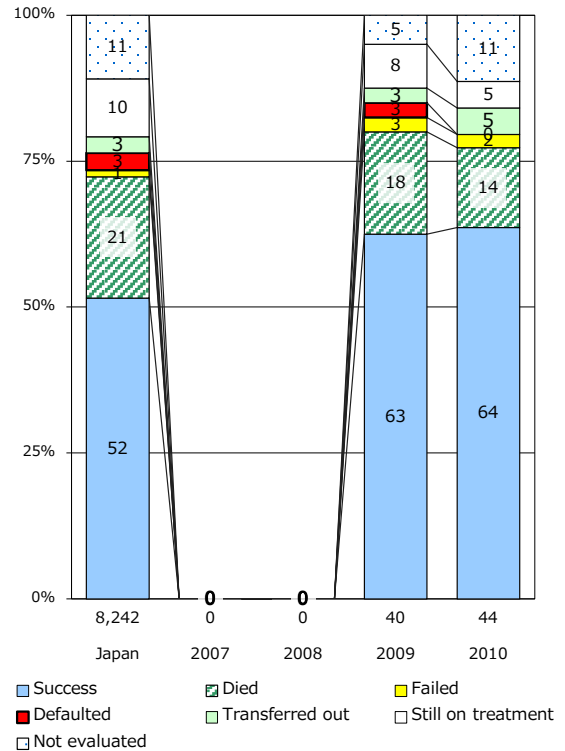


Proportion of DST results obtained among culture pos.



—◆— Sagamihara —■— Best prefec./city —x— Japan

Treatment outcomes of new sputum smear-pos. cases registered in 2007-2010



	'07	'08	'09	'10	'11	Year of registration	'07	'08	'09	'10	Japan
† Excluding unknown delay(%)	-	-	0.0	9.0	32.8	Median days of treatment (all forms)	-	-	267	256	(272)
# Excluding unknown Tx(%)	-	-	-	1.0	2.8	Median days of hospitalization (pul. TB)	-	-	46	63	(65)