

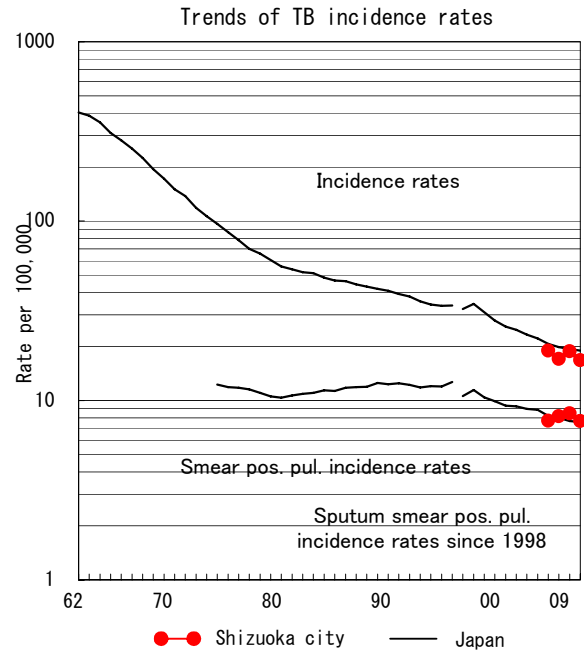
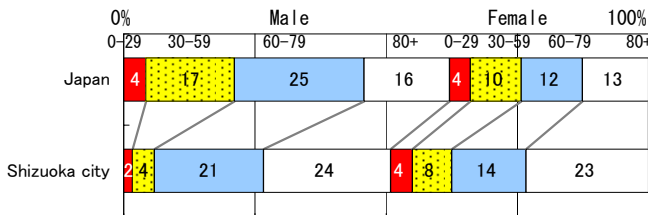
M8

Shizuoka city

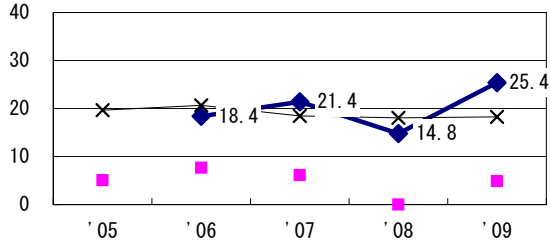
TB statistics in 2009		
Population	717,198	(Japan)
Foreigners	6	5.0% (3.9%)
Estimated homeless or poor TB among male cases aged 30-59 yrs	0	0.0% (12.0%)

Trends	'05	'06	'07	'08	'09
Notified cases	-	135	121	135	120
Rate per 100,000	-	19.0	17.0	18.8	16.7
Sputum smear pos. pul. cases	-	55	58	61	55
Rate per 100,000	-	7.7	8.2	8.5	7.7

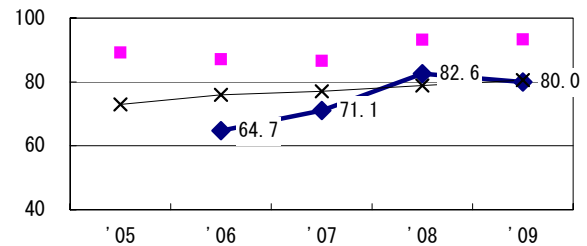
Age-sex composition of notified cases, 2009



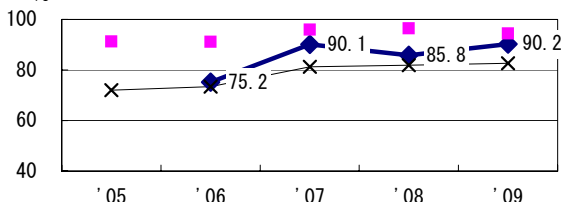
Proportion of cases with long case finding delay (>3M) among symptomatic pul. TB †



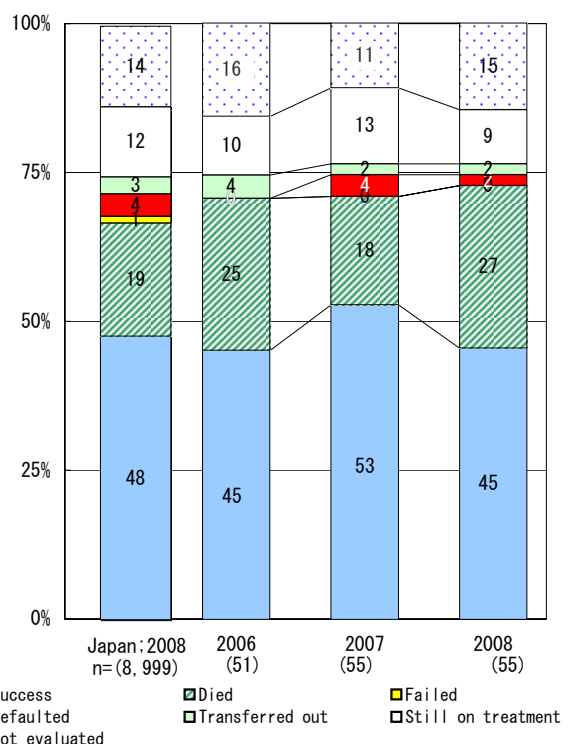
Proportion of Tx with HRZ-E/S among all forms of TB cases aged under 80 yrs ‡



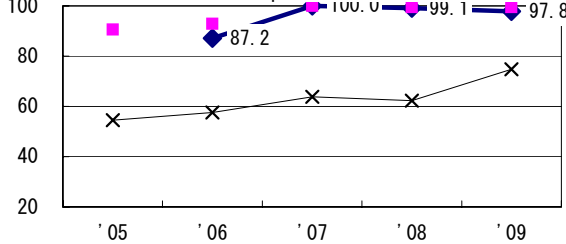
Proportion of bacillary cases among pul. TB



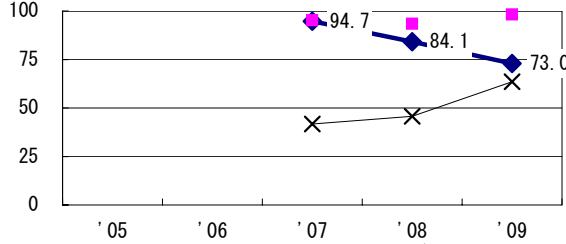
Treatment outcomes of new sputum smear-pos. pul. cases registered in 2006-2008



Proportion of culture results obtained among pul. TB



Proportion of DST results obtained among culture pos. pul. TB



	'05	'06	'07	'08	'09
† Excluding unk delay (%)	-	1.3	0.0	0.0	20.3
‡ Excluding unk Tx (%)	-	2.3	0.0	1.4	0.0

Registered year	'07	'08	Japan
Median days of treatment (all forms)	277	271	(272)
Median days of hospitalization (pul. TB)	63	52	(67)