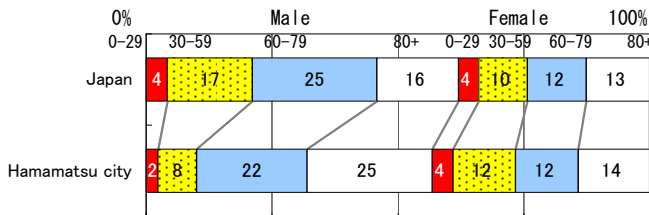


Hamamatsu city

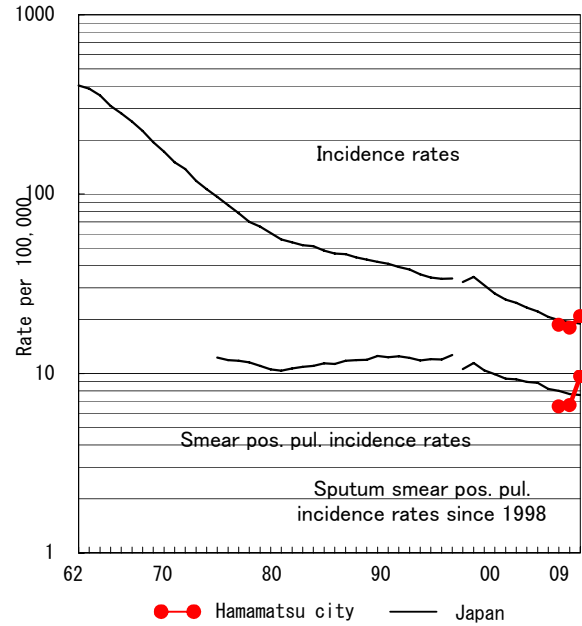
TB statistics in 2009		
Population	811,397	(Japan)
Foreigners	16	9.5% (3.9%)
Estimated homeless or poor TB among male cases aged 30-59 yrs	1	7.7% (12.0%)

Trends	'05	'06	'07	'08	'09
Notified cases	-	-	151	146	169
Rate per 100,000	-	-	18.6	18.0	20.8
Sputum smear pos. pul. cases	-	-	53	54	78
Rate per 100,000	-	-	6.5	6.6	9.6

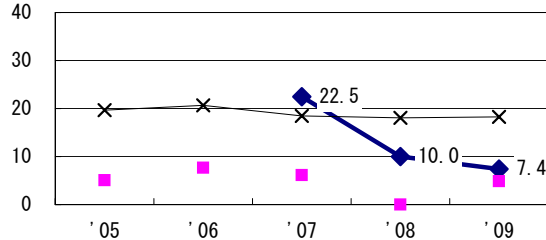
Age-sex composition of notified cases, 2009



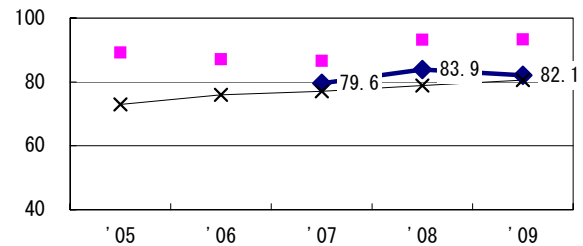
Trends of TB incidence rates



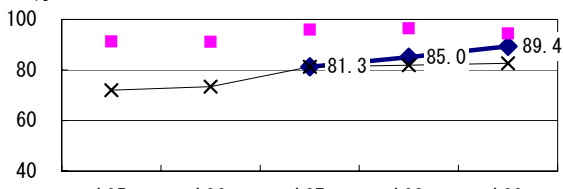
Proportion of cases with long case finding delay (>3M) among symptomatic pul. TB †



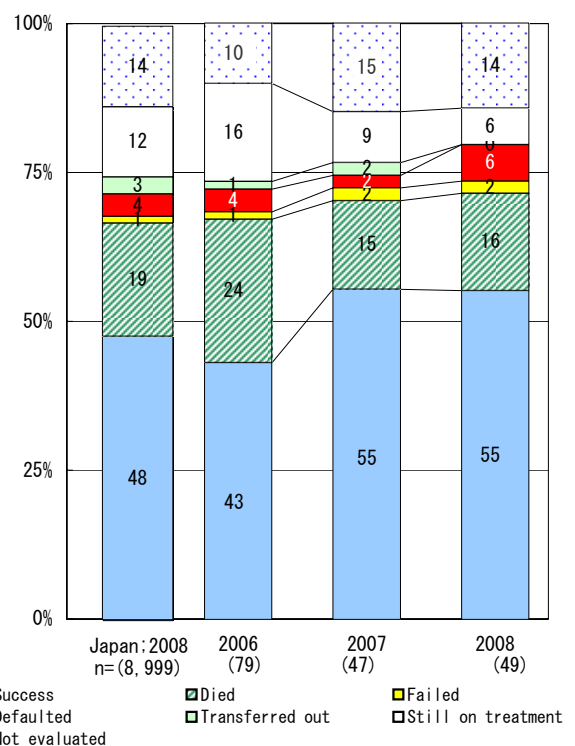
Proportion of Tx with HRZ-E/S among all forms of TB cases aged under 80 yrs ‡



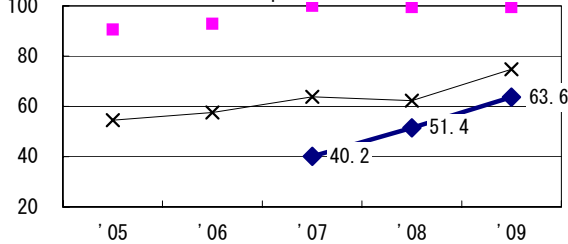
Proportion of bacillary cases among pul. TB



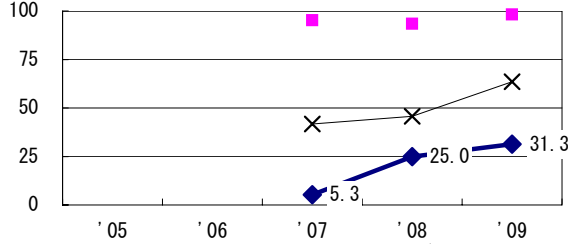
Treatment outcomes of new sputum smear-pos. pul. cases registered in 2006-2008



Proportion of culture results obtained among pul. TB



Proportion of DST results obtained among culture pos. pul. TB



◆ Hamamatsu city ■ Best prefec./city × Japar

	'05	'06	'07	'08	'09
† Excluding unk delay (%)	-	-	34.4	36.5	71.0
‡ Excluding unk Tx (%)	-	-	2.1	5.1	1.0

Registered year	'07	'08	Japan
Median days of treatment (all forms)	211	231	(272)
Median days of hospitalization (pul. TB)	75	102	(67)