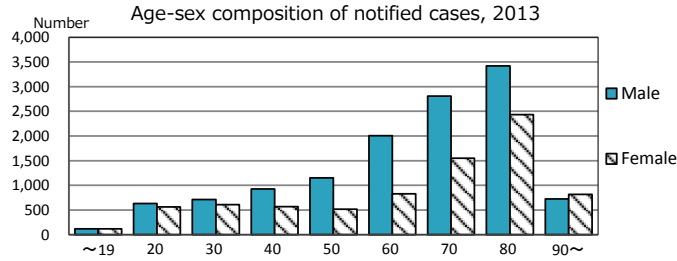
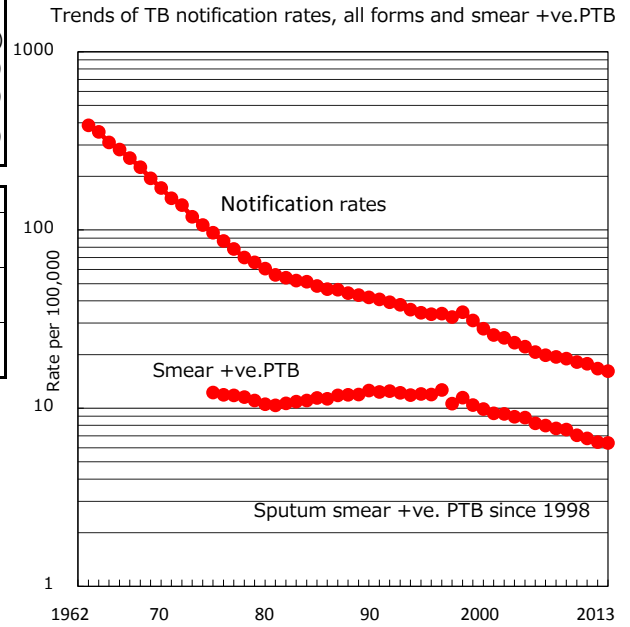
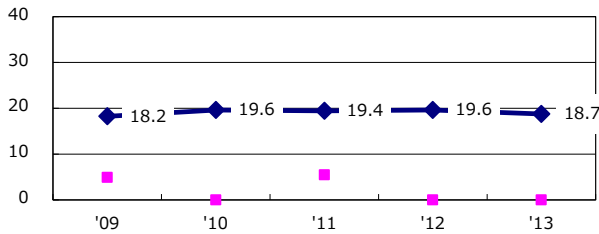


TB statistics in 2013 (Population in Japan 127,297,686)	
Among newly registered :	(Japan)
Foreign borns	1,064 5.2% (5.2%)
TB cases with homeless history	259 1.3% (1.3%)
Male aged 35-59, without job and receiving public assistance	249 8.9% (8.9%)

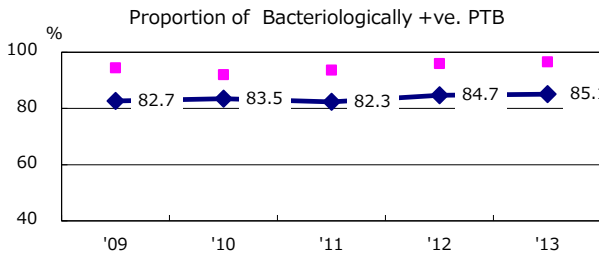
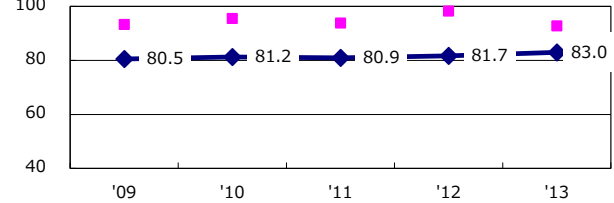
Trends	'09	'10	'11	'12	'13
Notified cases	24,170	23,261	22,681	21,283	20,495
Rate per 100,000 population	19.0	18.2	17.7	16.7	16.1
Sputum smear +ve. pul.cases	9,675	9,019	8,654	8,237	8,119
Rate per 100,000 population	7.6	7.0	6.8	6.5	6.4
Latent Tuberculosis Infection	4,119	4,930	10,046	8,771	7,147
Rate per 100,000 population	3.2	3.8	7.9	6.9	5.6



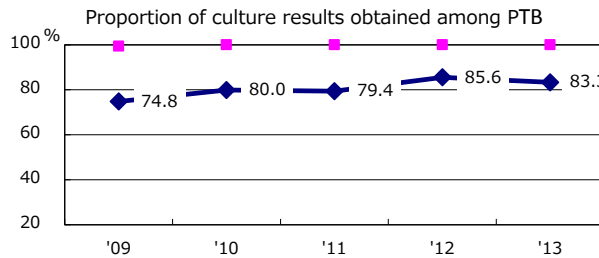
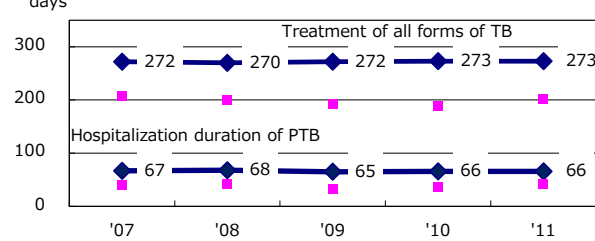
Proportion of cases with total diagnosis delay (> 3 mths) among symptomatic PTB



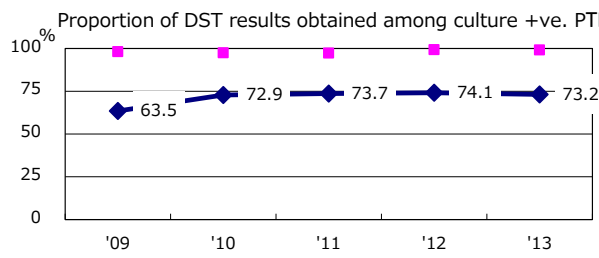
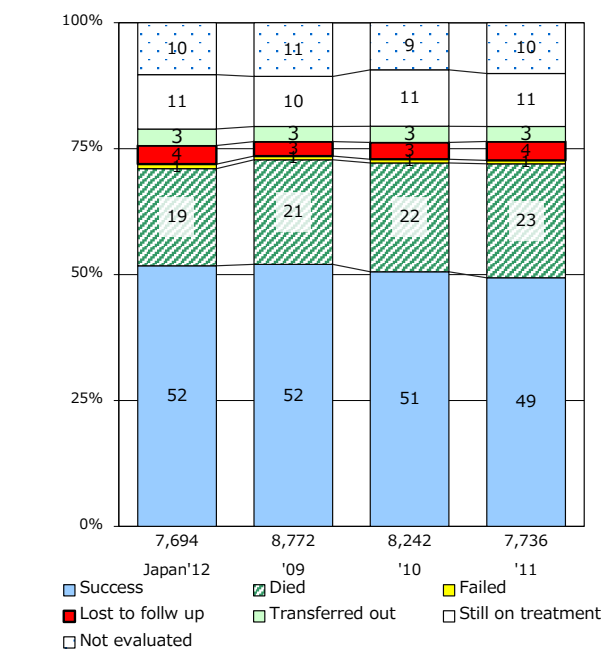
Proportion of TX with HRZ-E/S among all forms of TB cases aged under 80 yrs †



Median duration of treatment of all forms and hospitalization among PTB



Treatment outcomes of new sputum smear +ve.TB



PTB : pumonyary TB

† Excluding unknown delay(%)	'09	'10	'11	'12	'13
	38.2	34.1	32.6	32.6	33.7

‡ Excluding unknown Tx(%)	'09	'10	'11	'12	'13
	4.4	2.8	2.8	2.3	2.6