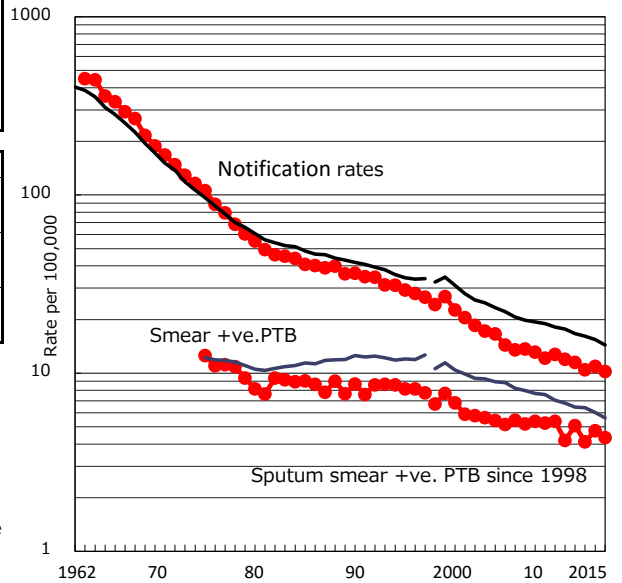


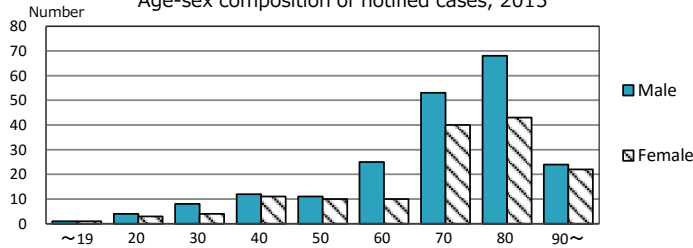
TB statistics in 2015		(Population in Hokkaido		3,429,795)
Among newly notified :		(Japan)		
Foreign borns	10	2.9%	(6.4%)	
TB cases with homeless history	1	0.3%	(0.9%)	
Male aged 35-59, without job and receiving public assistance	1	3.2%	(9.0%)	

Trends	'11	'12	'13	'14	'15
Notified cases	428	406	365	378	350
Rate per 100,000 population	12.0	11.5	10.4	10.9	10.2
Sputum smear +ve. PTB	150	179	144	164	149
Rate per 100,000 population	4.2	5.1	4.1	4.7	4.3
Latent Tuberculosis Infection	264	188	171	144	129
Rate per 100,000 population	7.4	5.3	4.9	4.2	3.8

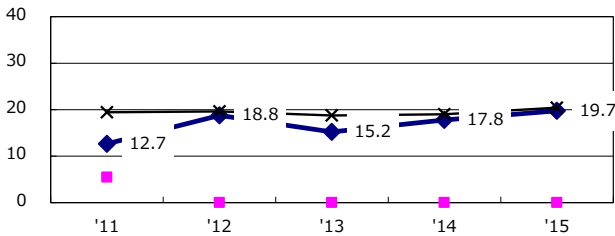
Trends of TB notification rates, all forms and smear +ve.PTE



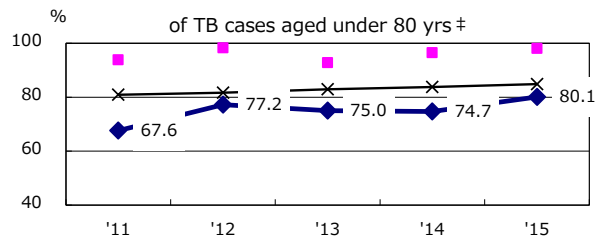
Age-sex composition of notified cases, 2015



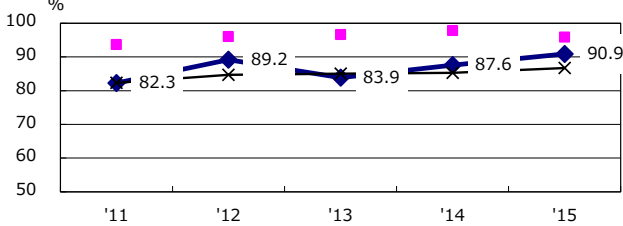
Proportion of cases with total diagnosis delay (> 3 mths) among symptomatic PTB*



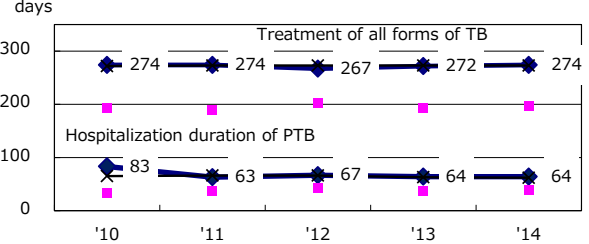
Proportion of TX with HRZ-E/S among all forms of TB cases aged under 80 yrs †



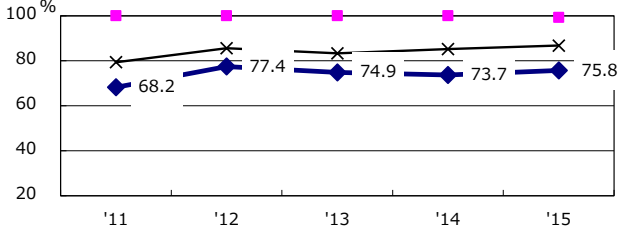
Proportion of Bacteriologically +ve. PTB



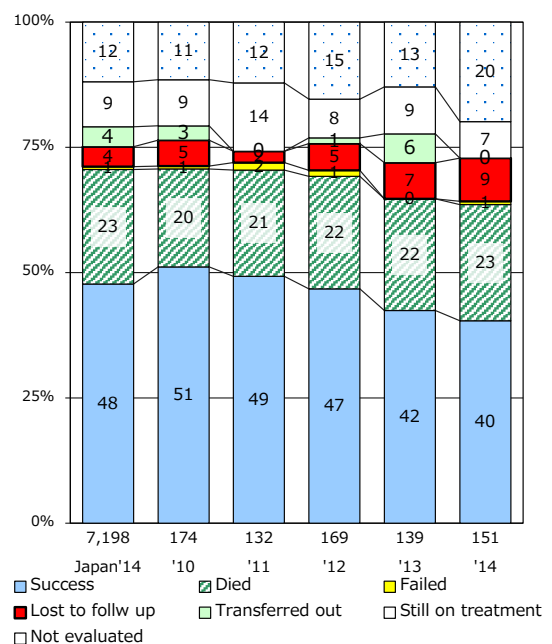
Median duration of treatment of all forms and hospitalization among PTB



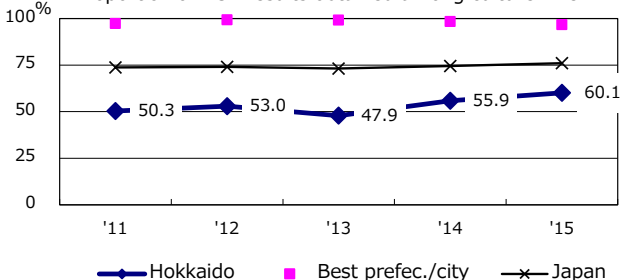
Proportion of culture results obtained among PTB



Treatment outcomes of new sputum smear +ve.TB



Proportion of DST results obtained among culture +ve. PTB



PTB : pulmonary TB

† Excluding unknown delay(%)	'11	'12	'13	'14	'15
	28.4	19.9	24.8	27.2	29.0

‡ Excluding unknown Tx(%)	'11	'12	'13	'14	'15
	4.3	5.3	4.0	4.0	6.2