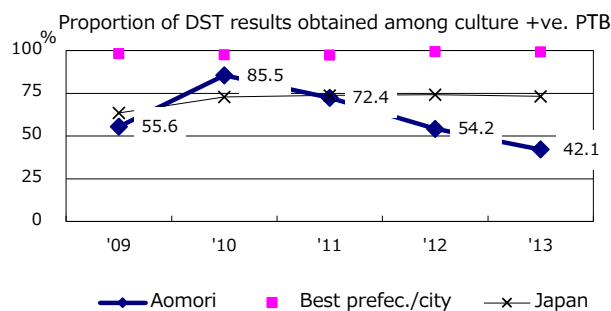
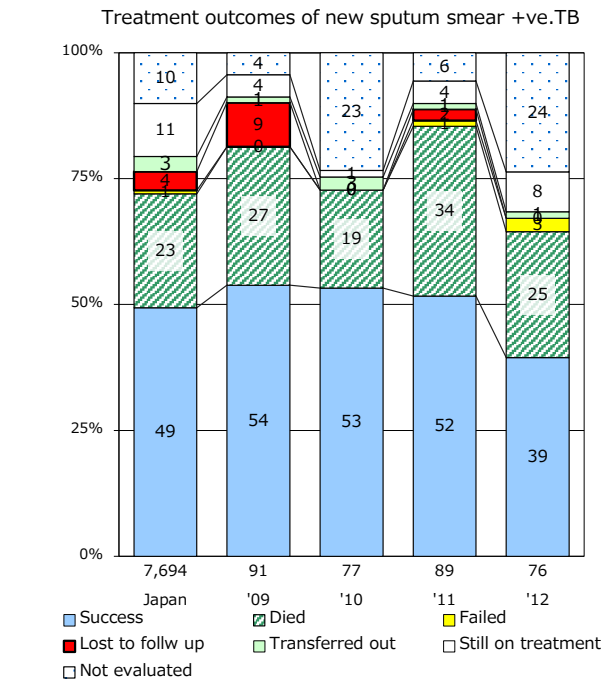
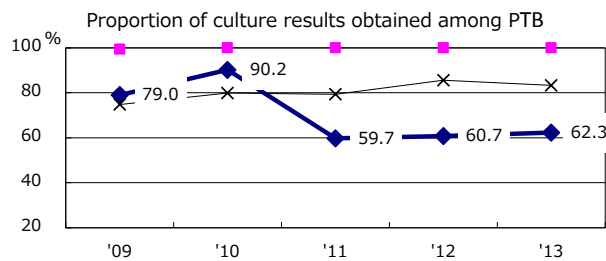
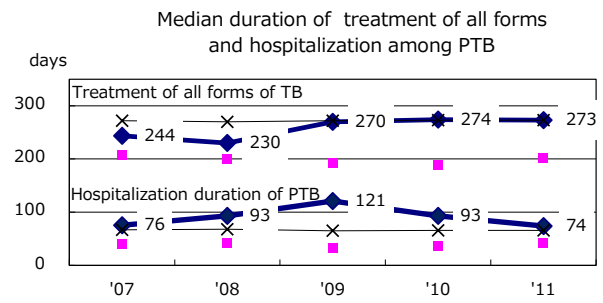
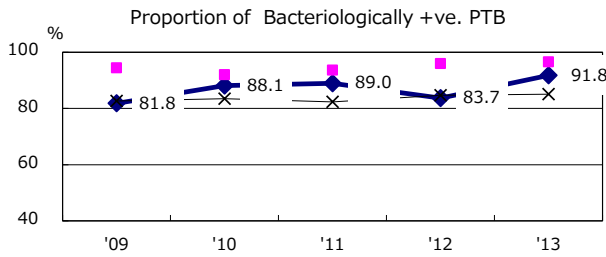
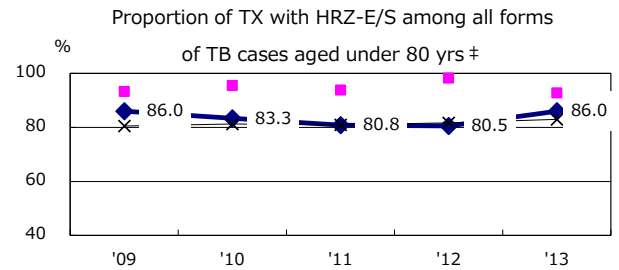
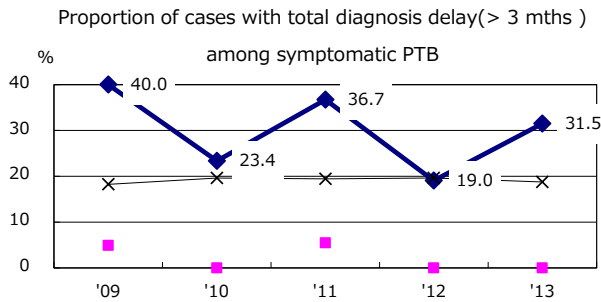
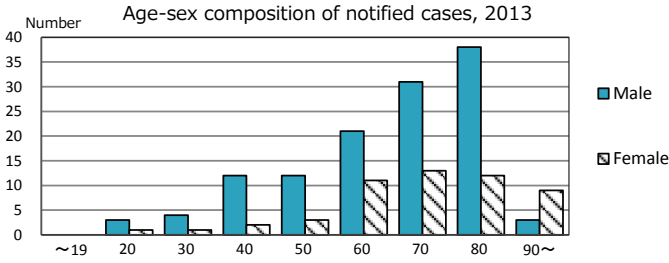
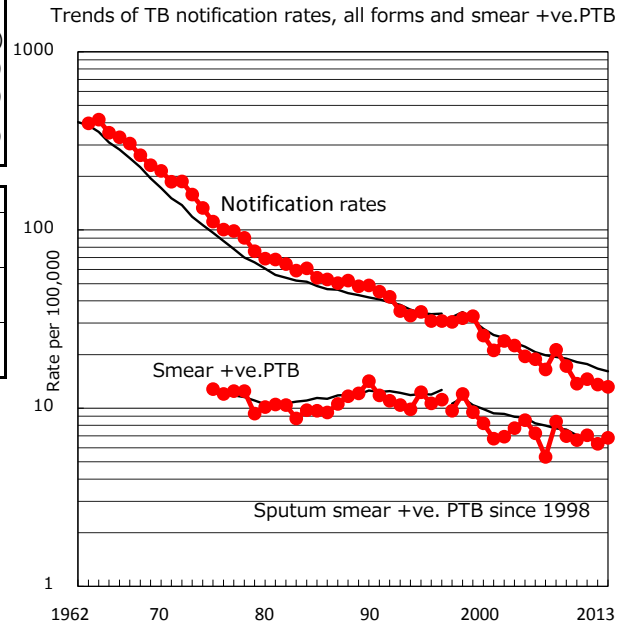


TB statistics in 2013 (Population in Aomori 1,335,494)	
Among newly registered : (Japan)	
Foreign borns	0 0.0% (5.0%)
TB cases with homeless history	0 0.0% (1.6%)
Male aged 35-59,without job and receiveing public assistance	2 7.1% (10.8%)

Trends	'09	'10	'11	'12	'13
Notified cases	238	188	198	183	176
Rate per 100,000 population	17.3	13.7	14.5	13.6	13.2
Sputum smear +ve. pul.cases	96	91	96	85	91
Rate per 100,000 population	7.0	6.6	7.0	6.3	6.8
Latent Tuberculosis Infection	89	135	236	192	131
Rate per 100,000 population	6.5	9.8	17.3	14.2	9.8



PTB : pumonary TB

† Excluding unknown delay(%)	'09	'10	'11	'12	'13
	56.0	6.1	9.9	35.1	47.1

‡ Excluding unknown Tx(%)	'09	'10	'11	'12	'13
	2.4	1.4	0.8	2.6	6.1