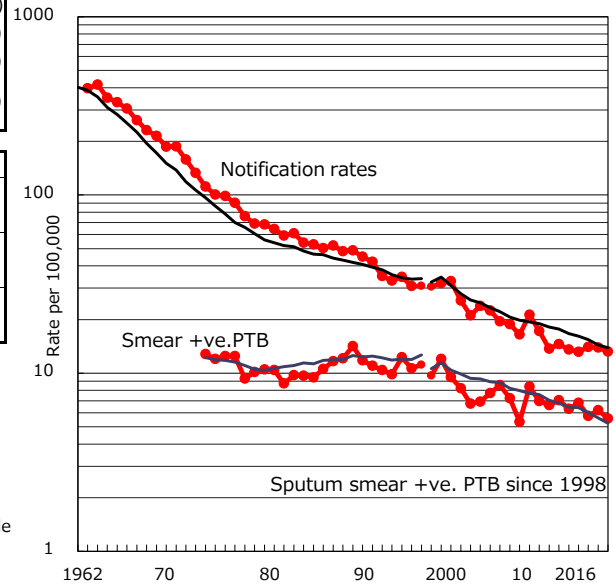


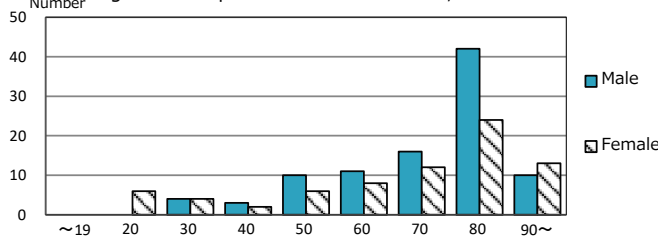
TB statistics in 2016 (Population in Aomori 1,293,470)	
Among newly notified : (Japan)	
Foreign borns	5 2.9% (7.6%)
TB cases with homeless history	0 0.0% (1.0%)
Male aged 35-59, without job and receiving public assistance	2 11.8% (7.7%)

Trends	'12	'13	'14	'15	2016
Notified cases	183	176	185	182	171
Rate per 100,000 population	13.6	13.2	14.0	13.9	13.2
Sputum smear +ve. PTB	85	91	76	81	72
Rate per 100,000 population	6.3	6.8	5.8	6.2	5.6
Latent Tuberculosis Infection	192	131	180	114	121
Rate per 100,000 population	14.2	9.8	13.6	8.7	9.4

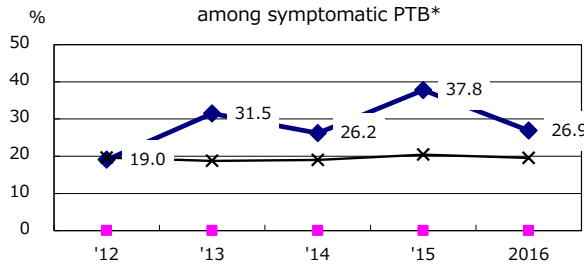
Trends of TB notification rates, all forms and smear +ve.PTB



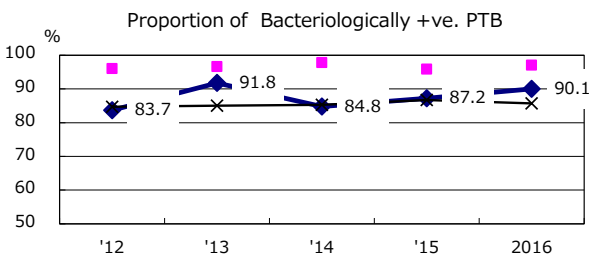
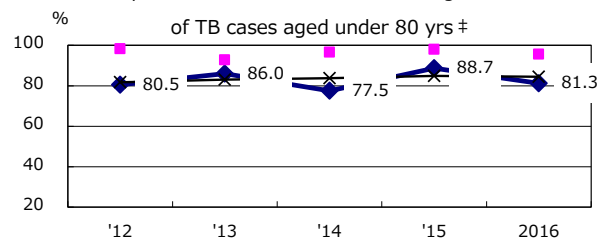
Age-sex composition of notified cases, 2016



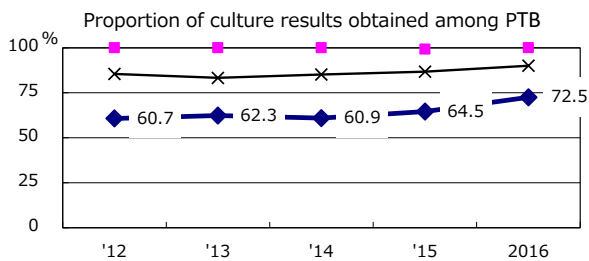
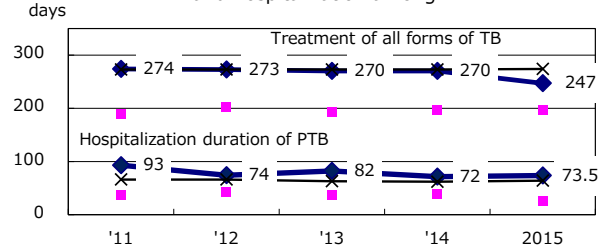
Proportion of cases with total diagnosis delay (> 3 mths) among symptomatic PTB*



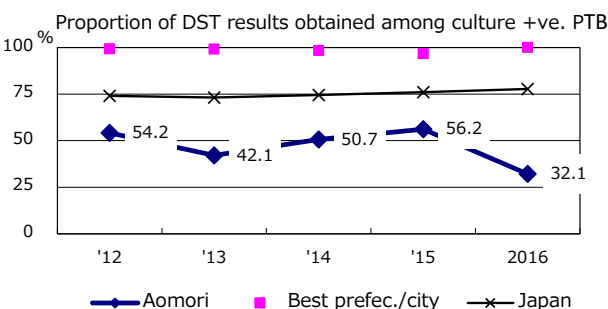
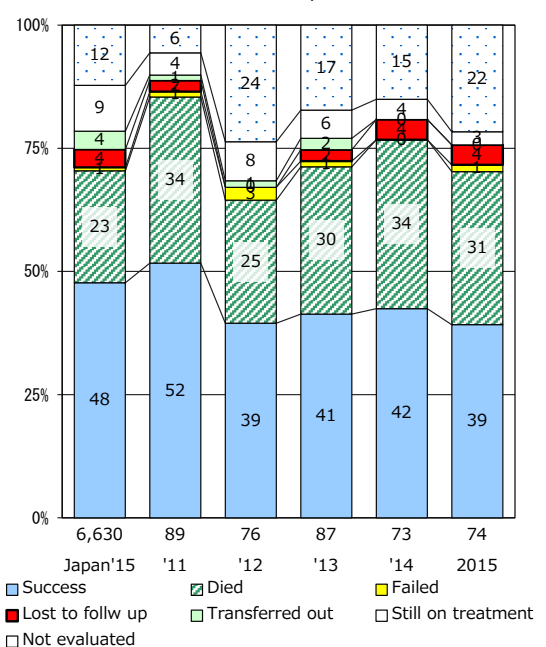
Proportion of TX with HRZ-E/S among all forms of TB cases aged under 80 yrs †



Median duration of treatment of all forms and hospitalization among PTB



Treatment outcomes of new sputum smear +ve.TB



PTB : pulmonary TB

† Excluding unknown delay(%)	'12	'13	'14	'15	2016
	35.1	47.1	60.0	57.1	38.5

‡ Excluding unknown Tx(%)	'12	'13	'14	'15	2016
	2.6	6.1	0.0	0.9	2.4