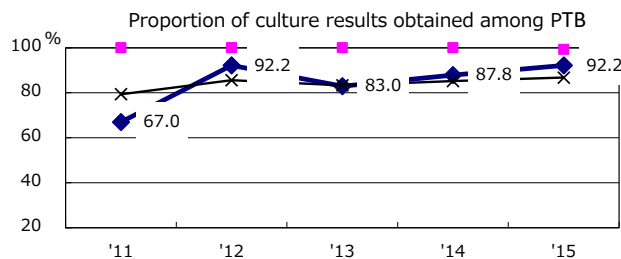
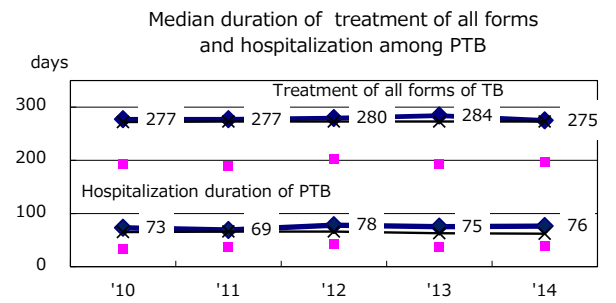
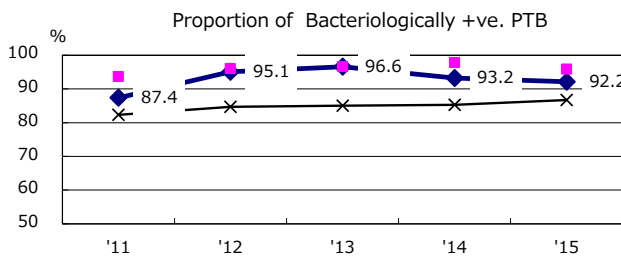
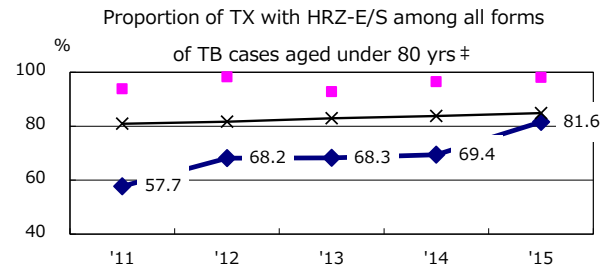
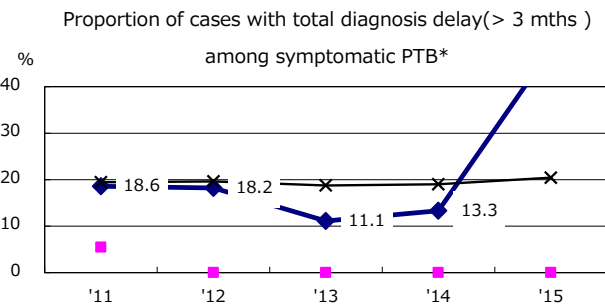
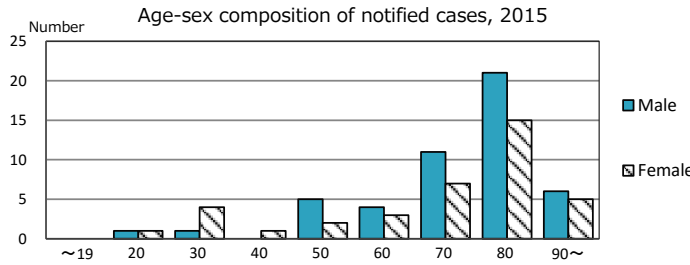
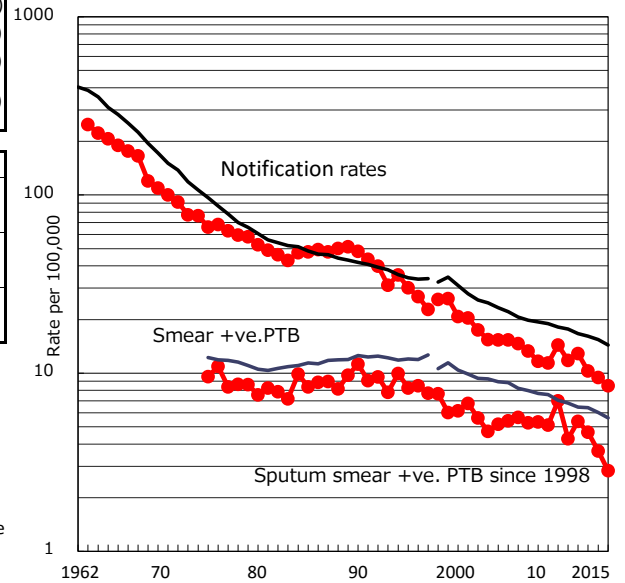


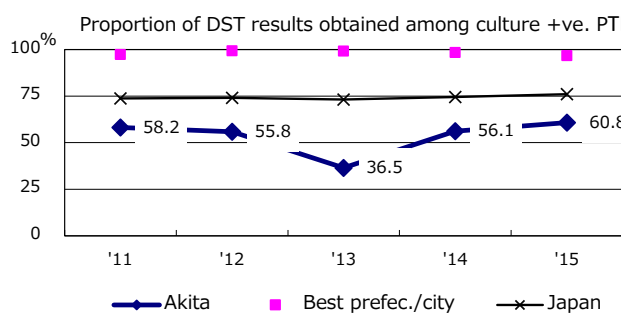
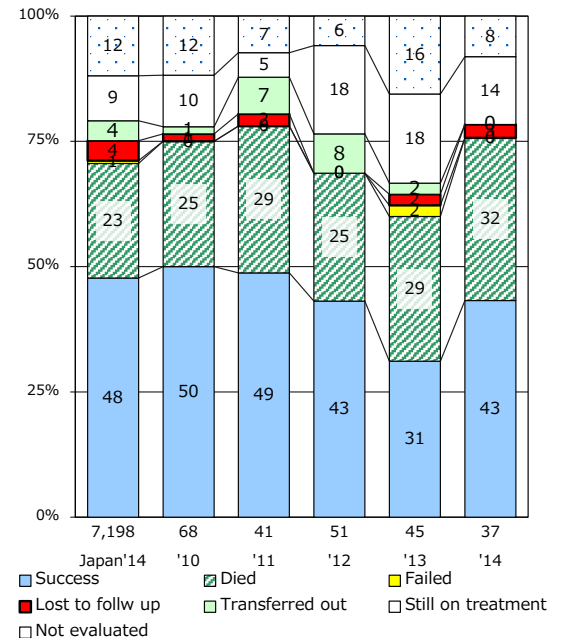
TB statistics in 2015 Among newly notified : Foreign borns TB cases with homeless history Male aged 35-59, without job and receiving public assistance	(Population in Akita (Japan) 4 4.6% (6.4%) 0 0.0% (0.9%) 2 33.3% (9.0%)	1,022,839)
--	--	-------------

Trends	'11	'12	'13	'14	'15
Notified cases	127	137	108	98	87
Rate per 100,000 population	11.8	12.9	10.3	9.5	8.5
Sputum smear +ve. PTB	46	57	49	38	29
Rate per 100,000 population	4.3	5.4	4.7	3.7	2.8
Latent Tuberculosis Infection	112	72	67	64	34
Rate per 100,000 population	10.4	6.8	6.4	6.2	3.3

Trends of TB notification rates, all forms and smear +ve.PTE



Treatment outcomes of new sputum smear +ve.TB



PTB : pulmonary TB

† Excluding unknown delay(%)	'11	'12	'13	'14	'15
	35.8	45.7	49.3	46.4	50.9

‡ Excluding unknown Tx(%)	'11	'12	'13	'14	'15
	12.3	0.0	2.4	7.5	5.0