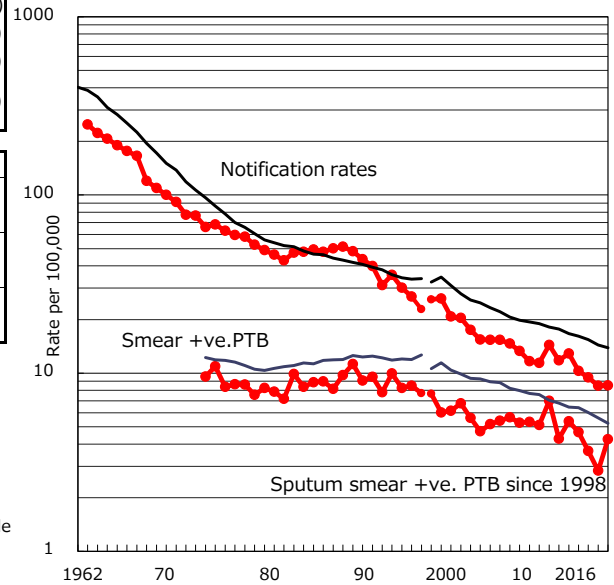


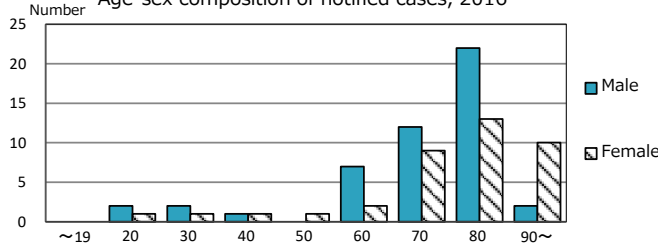
TB statistics in 2016 (Population in Akita		1,009,806)
Among newly notified :		(Japan)
Foreign borns	0	0.0% (7.6%)
TB cases with homeless history	0	0.0% (1.0%)
Male aged 35-59,without job and receiving public assistance	0	0.0% (7.7%)

Trends	'12	'13	'14	'15	2016
Notified cases	137	108	98	87	86
Rate per 100,000 population	12.9	10.3	9.5	8.5	8.5
Sputum smear +ve. PTB	57	49	38	29	43
Rate per 100,000 population	5.4	4.7	3.7	2.8	4.3
Latent Tuberculosis Infection	72	67	64	34	48
Rate per 100,000 population	6.8	6.4	6.2	3.3	4.8

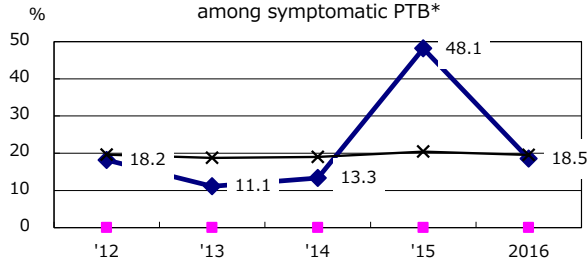
Trends of TB notification rates, all forms and smear +ve.PTB



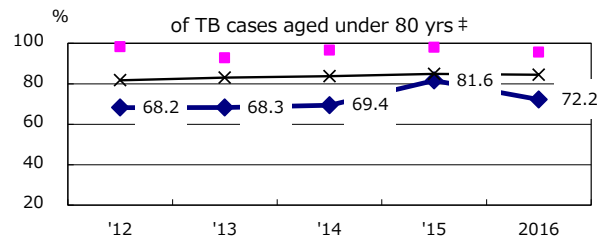
Age-sex composition of notified cases, 2016



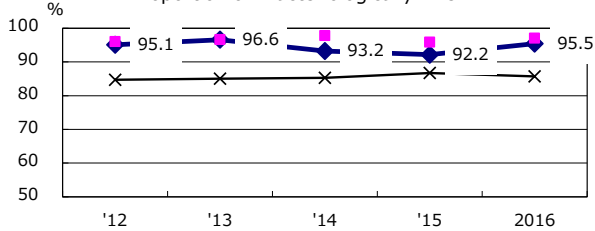
Proportion of cases with total diagnosis delay(> 3 mths) among symptomatic PTB*



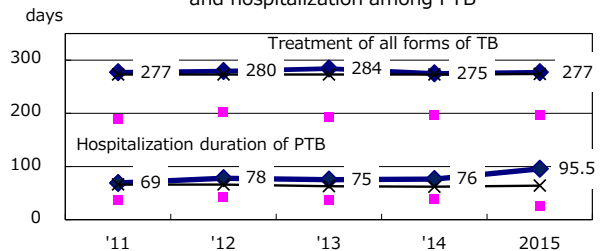
Proportion of TX with HRZ-E/S among all forms



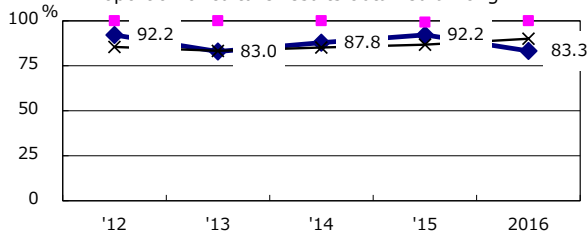
Proportion of Bacteriologically +ve. PTB



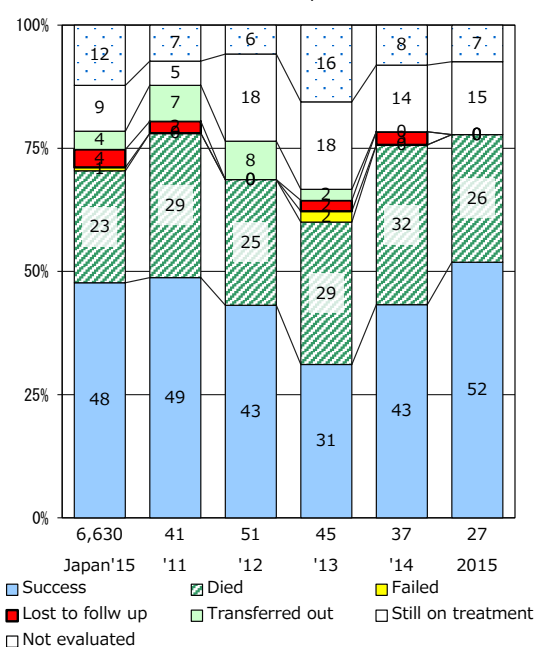
Median duration of treatment of all forms and hospitalization among PTB



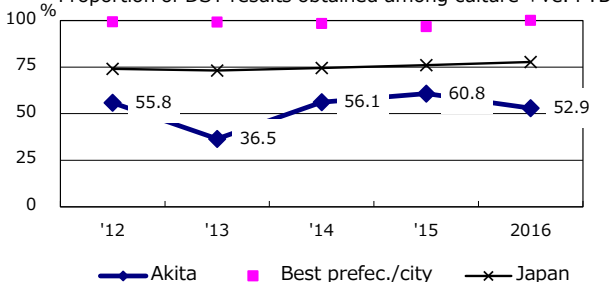
Proportion of culture results obtained among PTB



Treatment outcomes of new sputum smear +ve.TB



Proportion of DST results obtained among culture +ve. PTB



PTB : pulmonary TB

† Excluding unknown delay(%)	'12	'13	'14	'15	2016
	45.7	49.3	46.4	50.9	40.0

‡ Excluding unknown Tx(%)	'12	'13	'14	'15	2016
	0.0	2.4	7.5	5.0	7.7