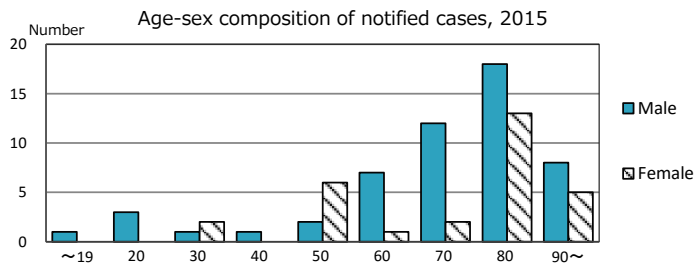
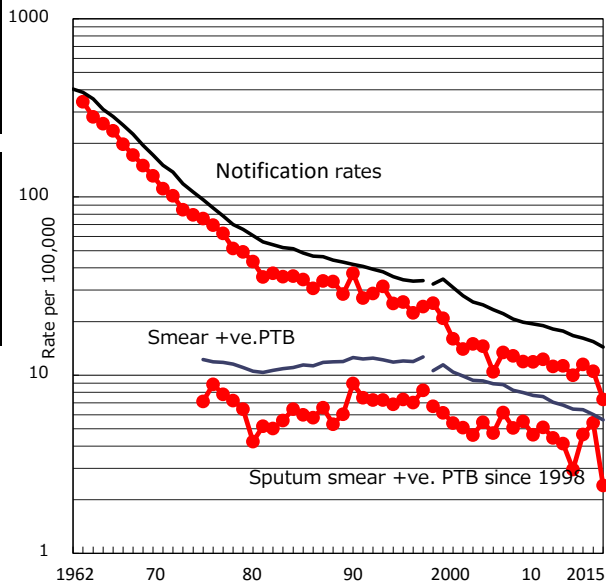


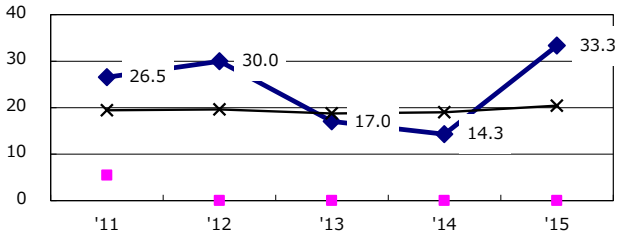
TB statistics in 2015 (Population in Yamagata 1,122,957)	
Among newly notified : (Japan)	
Foreign borns	3 3.7% (6.4%)
TB cases with homeless history	0 0.0% (0.9%)
Male aged 35-59, without job and receiving public assistance	0 0.0% (9.0%)

Trends	'11	'12	'13	'14	'15
Notified cases	131	115	131	119	82
Rate per 100,000 population	11.3	10.0	11.5	10.5	7.3
Sputum smear +ve. PTB	48	34	53	61	27
Rate per 100,000 population	4.1	3.0	4.6	5.4	2.4
Latent Tuberculosis Infection	157	80	77	61	58
Rate per 100,000 population	13.5	6.9	6.7	5.4	5.2

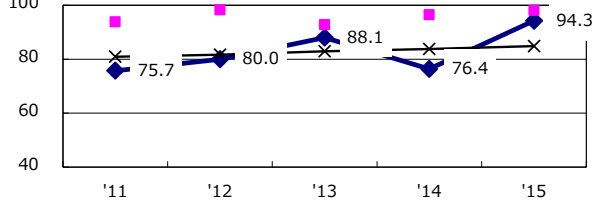
Trends of TB notification rates, all forms and smear +ve.PTE



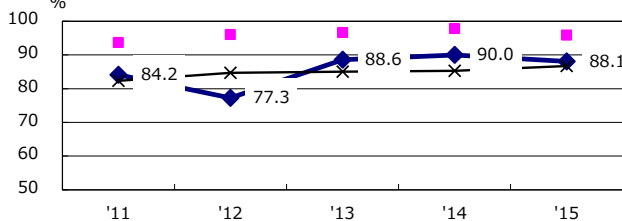
Proportion of cases with total diagnosis delay(> 3 mths) among symptomatic PTB*



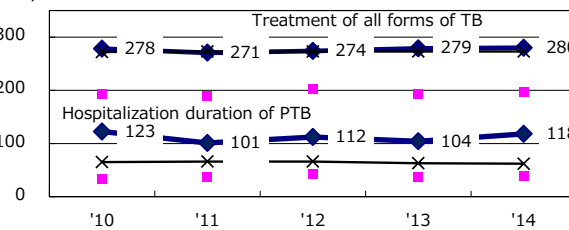
Proportion of TX with HRZ-E/S among all forms of TB cases aged under 80 yrs †



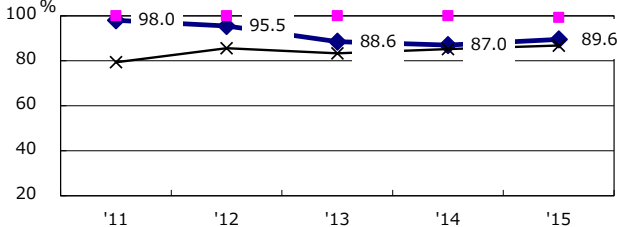
Proportion of Bacteriologically +ve. PTB



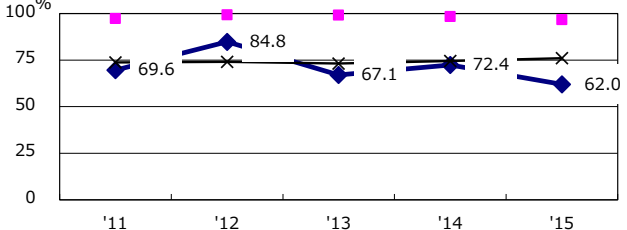
Median duration of treatment of all forms and hospitalization among PTB



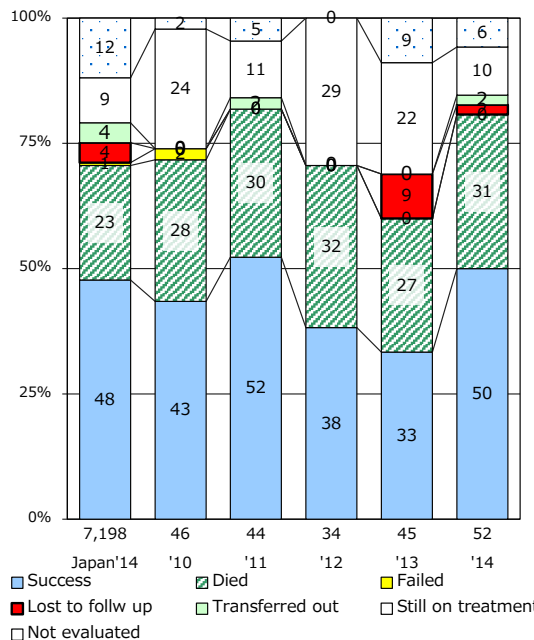
Proportion of culture results obtained among PTB



Proportion of DST results obtained among culture +ve. PTB



Treatment outcomes of new sputum smear +ve.TB



PTB : pulmonary TB

† Excluding unknown delay(%)	'11	'12	'13	'14	'15
	25.8	6.3	37.3	37.2	51.0

‡ Excluding unknown Tx(%)	'11	'12	'13	'14	'15
	2.8	1.6	4.3	1.8	7.9