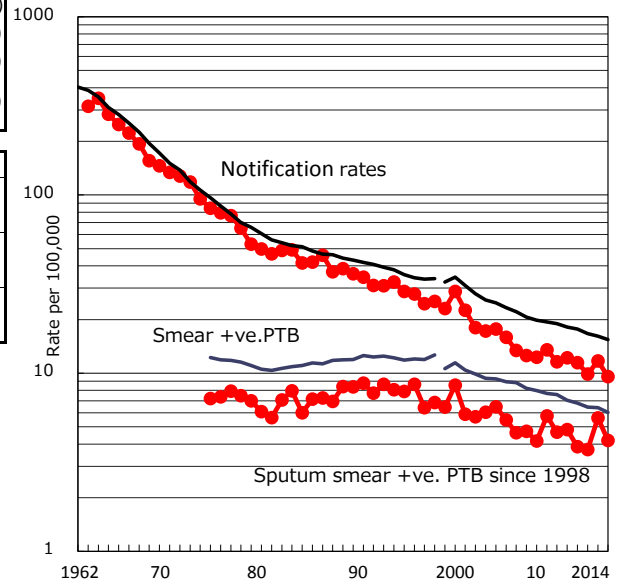


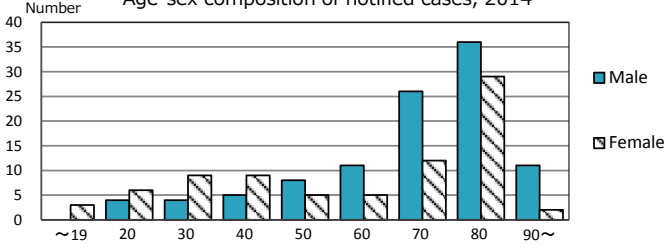
TB statistics in 2014 (Population in Fukushima 1,935,456)	
Among newly registered : (Japan)	
Foreign borns	13 7.0% (5.6%)
TB cases with homeless history	1 0.5% (1.1%)
Male aged 35-59,without job and receiveing public assistance	1 5.9% (8.0%)

Trends	'10	'11	'12	'13	'14
Notified cases	247	228	194	228	185
Rate per 100,000 population	12.2	11.5	9.9	11.7	9.6
Sputum smear +ve. pul.cases	98	77	73	109	81
Rate per 100,000 population	4.8	3.9	3.7	5.6	4.2
Latent Tuberculosis Infection	45	108	77	78	89
Rate per 100,000 population	2.2	5.4	3.9	4.0	4.6

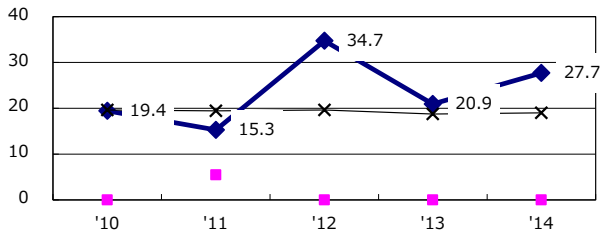
Trends of TB notification rates, all forms and smear +ve.PTB



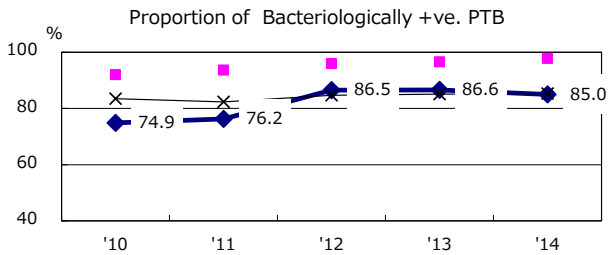
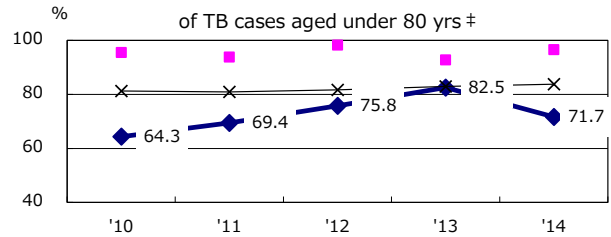
Age-sex composition of notified cases, 2014



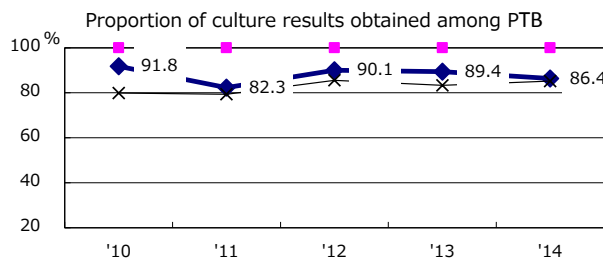
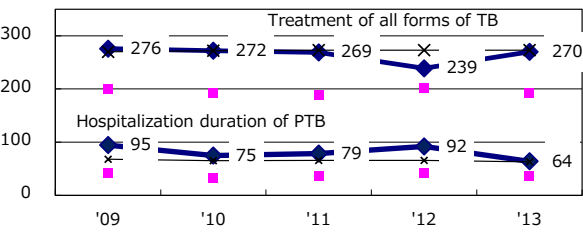
Proportion of cases with total diagnosis delay(> 3 mths) among symptomatic PTB*



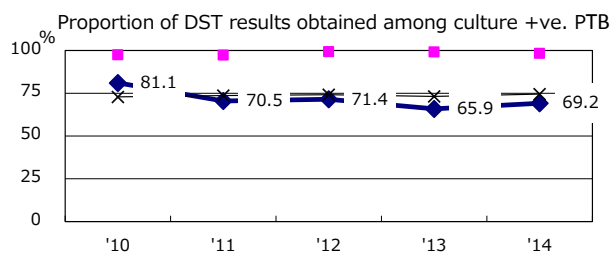
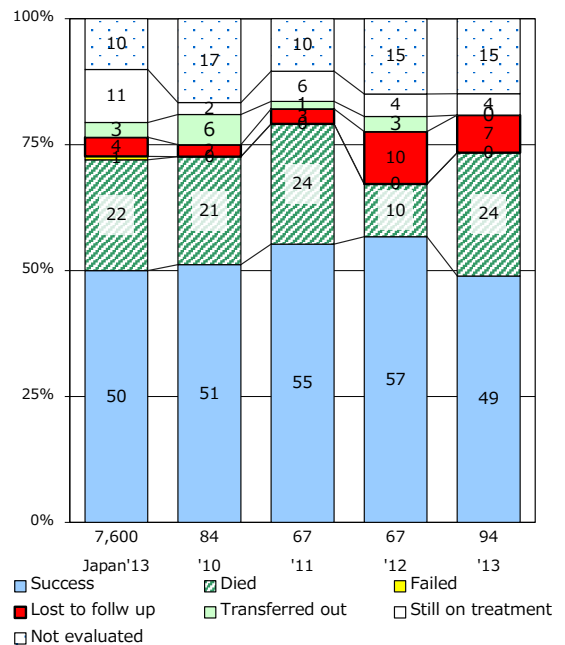
Proportion of TX with HRZ-E/S among all forms of TB cases aged under 80 yrs †



Median duration of treatment of all forms and hospitalization among PTB



Treatment outcomes of new sputum smear +ve.TB



PTB : pumonary TB

† Excluding unknown delay(%)	'10	'11	'12	'13	'14
	34.5	47.8	32.1	38.6	42.5

‡ Excluding unknown Tx(%)	'10	'11	'12	'13	'14
	1.3	2.9	0.8	3.1	0.9