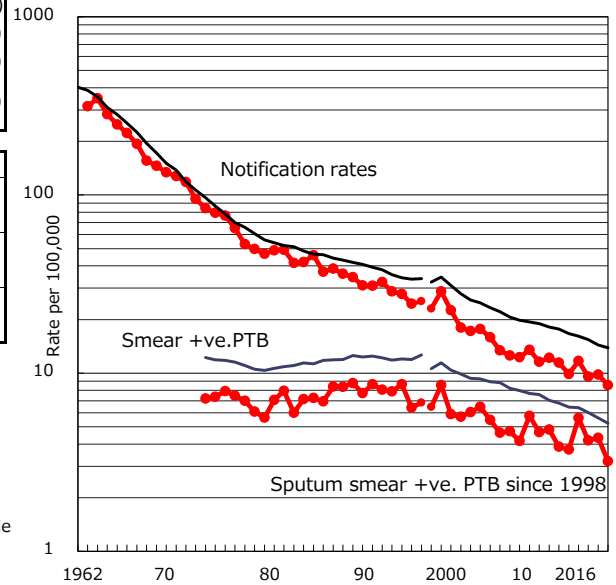


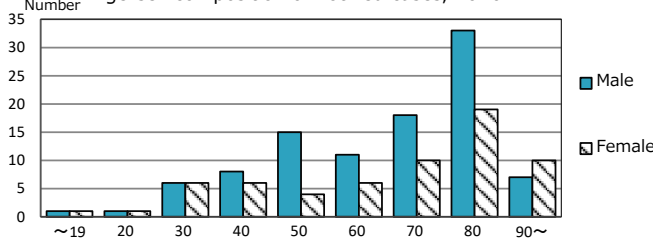
| | |
|---|---------------|
| TB statistics in 2016 (Population in Fukushima 1,900,760) | |
| Among newly notified : (Japan) | |
| Foreign borns | 5 3.1% (7.6%) |
| TB cases with homeless history | 0 0.0% (1.0%) |
| Male aged 35-59,without job and receiving public assistance | 1 3.4% (7.7%) |

| Trends | '12 | '13 | '14 | '15 | 2016 |
|-------------------------------|-----|------|-----|-----|------|
| Notified cases | 194 | 228 | 185 | 188 | 163 |
| Rate per 100,000 population | 9.9 | 11.7 | 9.6 | 9.8 | 8.6 |
| Sputum smear +ve. PTB | 73 | 109 | 81 | 83 | 61 |
| Rate per 100,000 population | 3.7 | 5.6 | 4.2 | 4.3 | 3.2 |
| Latent Tuberculosis Infection | 77 | 78 | 89 | 70 | 64 |
| Rate per 100,000 population | 3.9 | 4.0 | 4.6 | 3.7 | 3.4 |

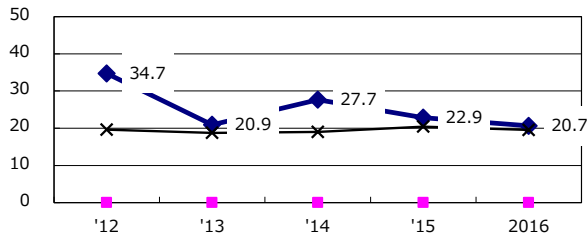
Trends of TB notification rates, all forms and smear +ve.PTB



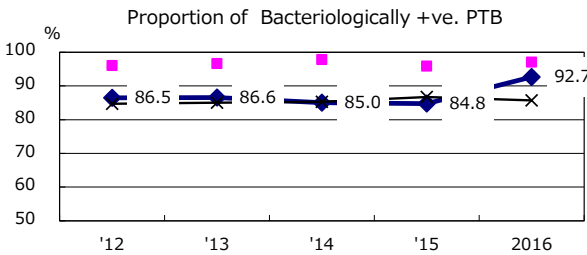
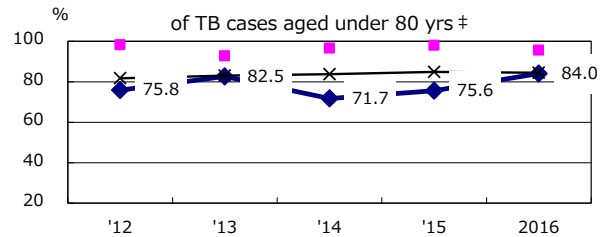
Age-sex composition of notified cases, 2016



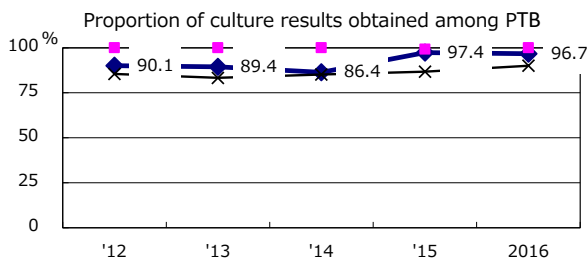
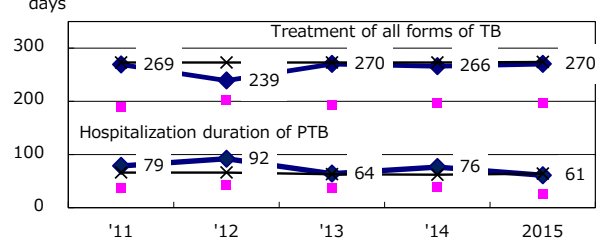
Proportion of cases with total diagnosis delay(> 3 mths) among symptomatic PTB*



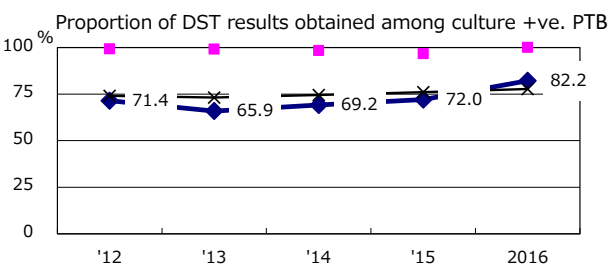
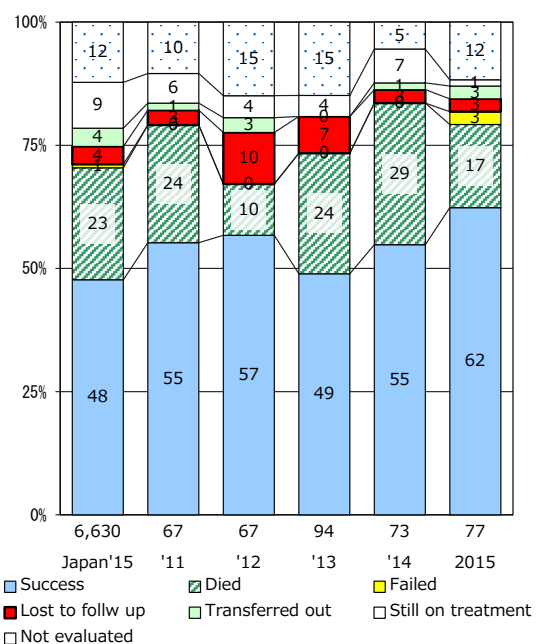
Proportion of TX with HRZ-E/S among all forms of TB cases aged under 80 yrs †



Median duration of treatment of all forms and hospitalization among PTB



Treatment outcomes of new sputum smear +ve.TB



PTB : pulmonary TB

| † Excluding unknown delay(%) | '12 | '13 | '14 | '15 | 2016 |
|------------------------------|------|------|------|-----|------|
| | 32.1 | 38.6 | 42.5 | 6.3 | 6.1 |

| ‡ Excluding unknown Tx(%) | '12 | '13 | '14 | '15 | 2016 |
|---------------------------|-----|-----|-----|-----|------|
| | 0.8 | 3.1 | 0.9 | 1.7 | 0.0 |