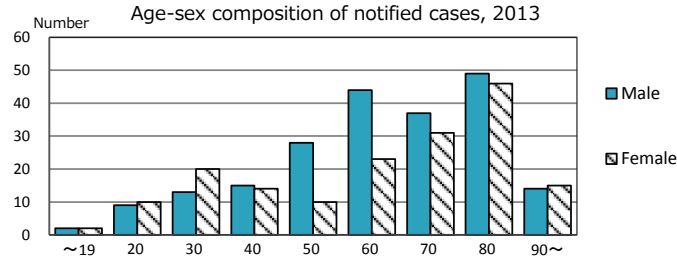
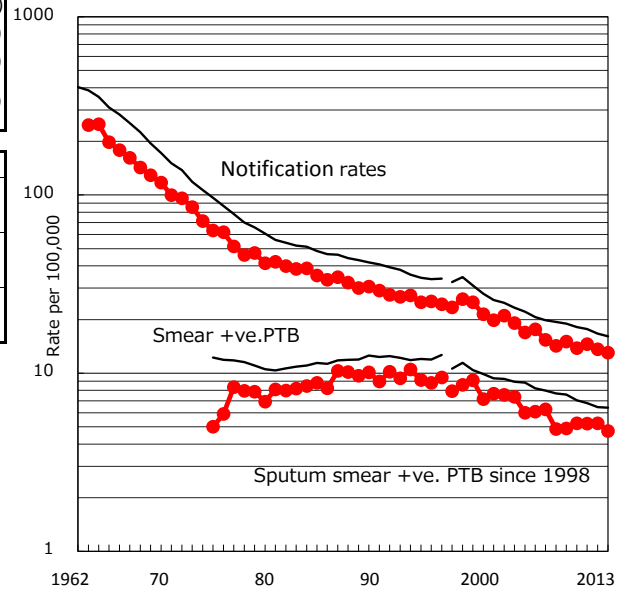


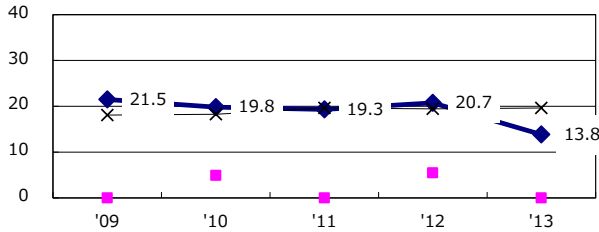
TB statistics in 2013 (Population in Ibaraki 2,931,302)	
Among newly registered : (Japan)	
Foreign borns	30 7.9% (5.0%)
TB cases with homeless history	1 0.3% (1.6%)
Male aged 35-59,without job and receiveing public assistance	2 3.6% (10.8%)

Trends	'09	'10	'11	'12	'13
Notified cases	446	410	431	401	382
Rate per 100,000 population	15.1	13.8	14.6	13.6	13.0
Sputum smear +ve. pul.cases	145	155	154	154	139
Rate per 100,000 population	4.9	5.2	5.2	5.2	4.7
Latent Tuberculosis Infection	90	201	267	207	119
Rate per 100,000 population	3.0	6.8	9.0	7.0	4.1

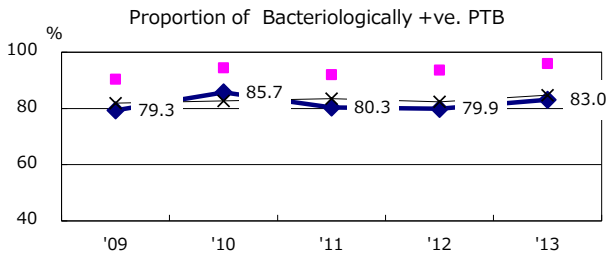
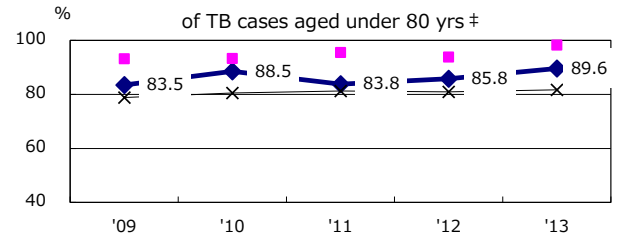
Trends of TB notification rates, all forms and smear +ve.PTB



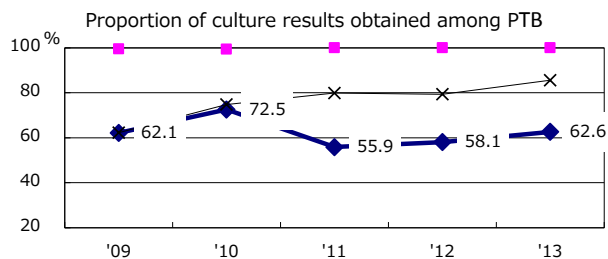
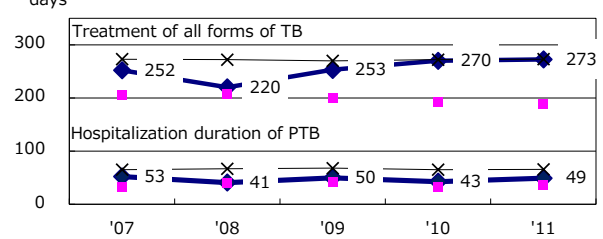
Proportion of cases with total diagnosis delay(> 3 mths) among symptomatic PTB



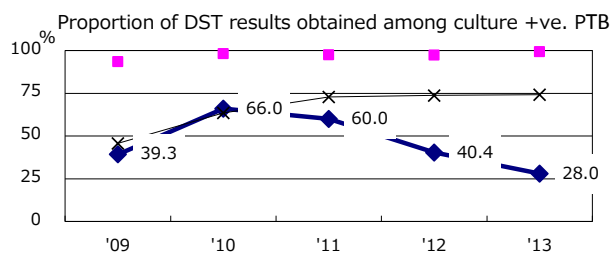
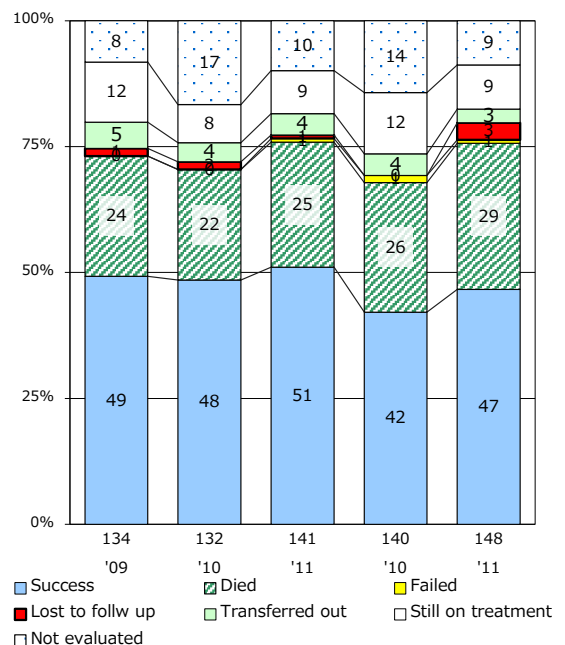
Proportion of TX with HRZ-E/S among all forms of TB cases aged under 80 yrs †



Median duration of treatment of all forms and hospitalization among PTB



Treatment outcomes of new sputum smear +ve.TB



PTB : pumonary TB

† Excluding unknown delay(%)	'09	'10	'11	'12	'13
	49.4	62.6	73.5	62.4	55.7

‡ Excluding unknown Tx(%)	'09	'10	'11	'12	'13
	1.8	0.9	3.8	2.1	3.1