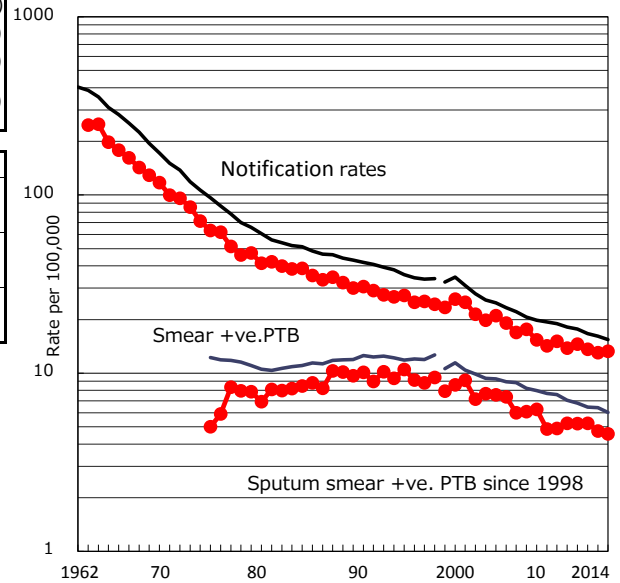


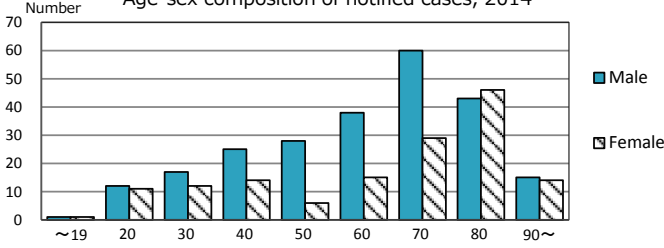
TB statistics in 2014 (Population in Ibaraki 2,918,710)	
Among newly registered : (Japan)	
Foreign borns	29 7.5% (5.6%)
TB cases with homeless history	3 0.8% (1.1%)
Male aged 35-59,without job and receiveing public assistance	1 1.4% (8.0%)

Trends	'10	'11	'12	'13	'14
Notified cases	410	431	401	382	387
Rate per 100,000 population	13.8	14.6	13.6	13.0	13.3
Sputum smear +ve. pul.cases	155	154	154	139	133
Rate per 100,000 population	5.2	5.2	5.2	4.7	4.6
Latent Tuberculosis Infection	201	267	207	119	160
Rate per 100,000 population	6.8	9.0	7.0	4.1	5.5

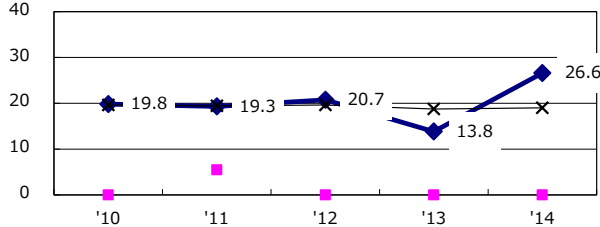
Trends of TB notification rates, all forms and smear +ve.PTB



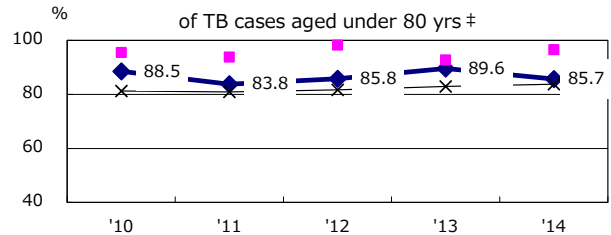
Age-sex composition of notified cases, 2014



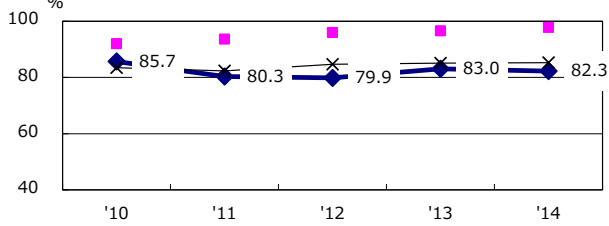
Proportion of cases with total diagnosis delay(> 3 mths) among symptomatic PTB*



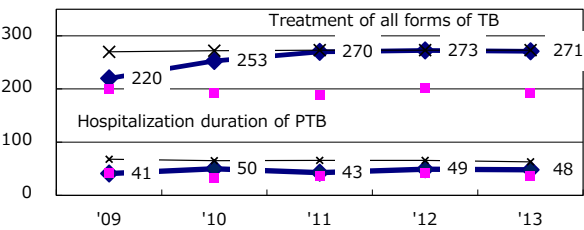
Proportion of TX with HRZ-E/S among all forms of TB cases aged under 80 yrs †



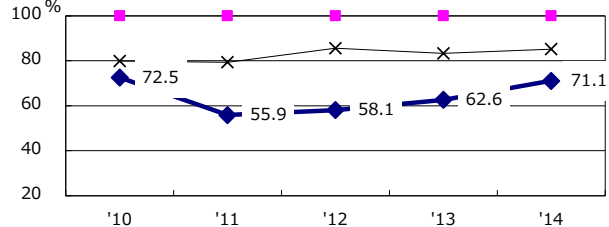
Proportion of Bacteriologically +ve. PTB



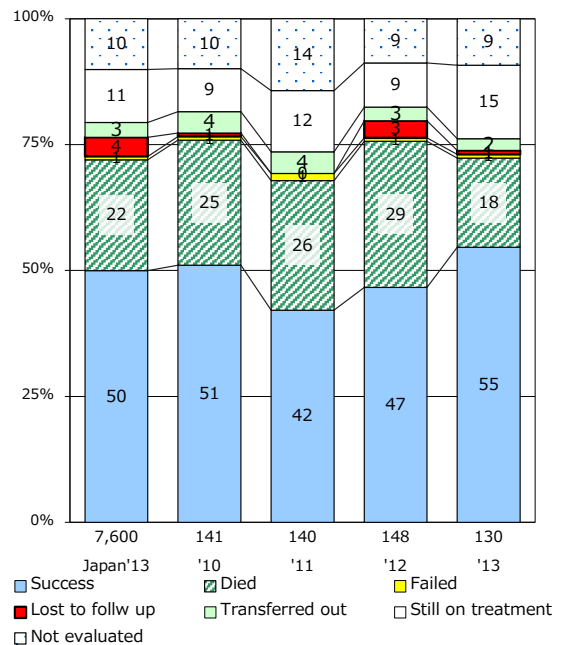
Median duration of treatment of all forms and hospitalization among PTB



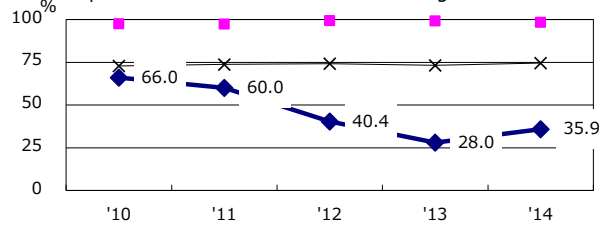
Proportion of culture results obtained among PTB



Treatment outcomes of new sputum smear +ve.TB



Proportion of DST results obtained among culture +ve. PTB



PTB : pumonary TB

† Excluding unknown delay(%)	'10	'11	'12	'13	'14
	62.6	73.5	62.4	55.7	54.8

‡ Excluding unknown Tx(%)	'10	'11	'12	'13	'14
	0.9	3.8	2.1	3.1	1.5